



# ENROLLMENT PROJECTION 2022-23

Independent School District 877  
Buffalo-Hanover-Montrose

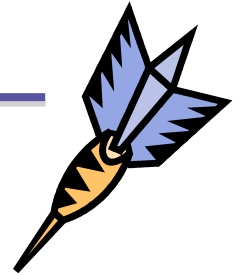
November 22, 2021



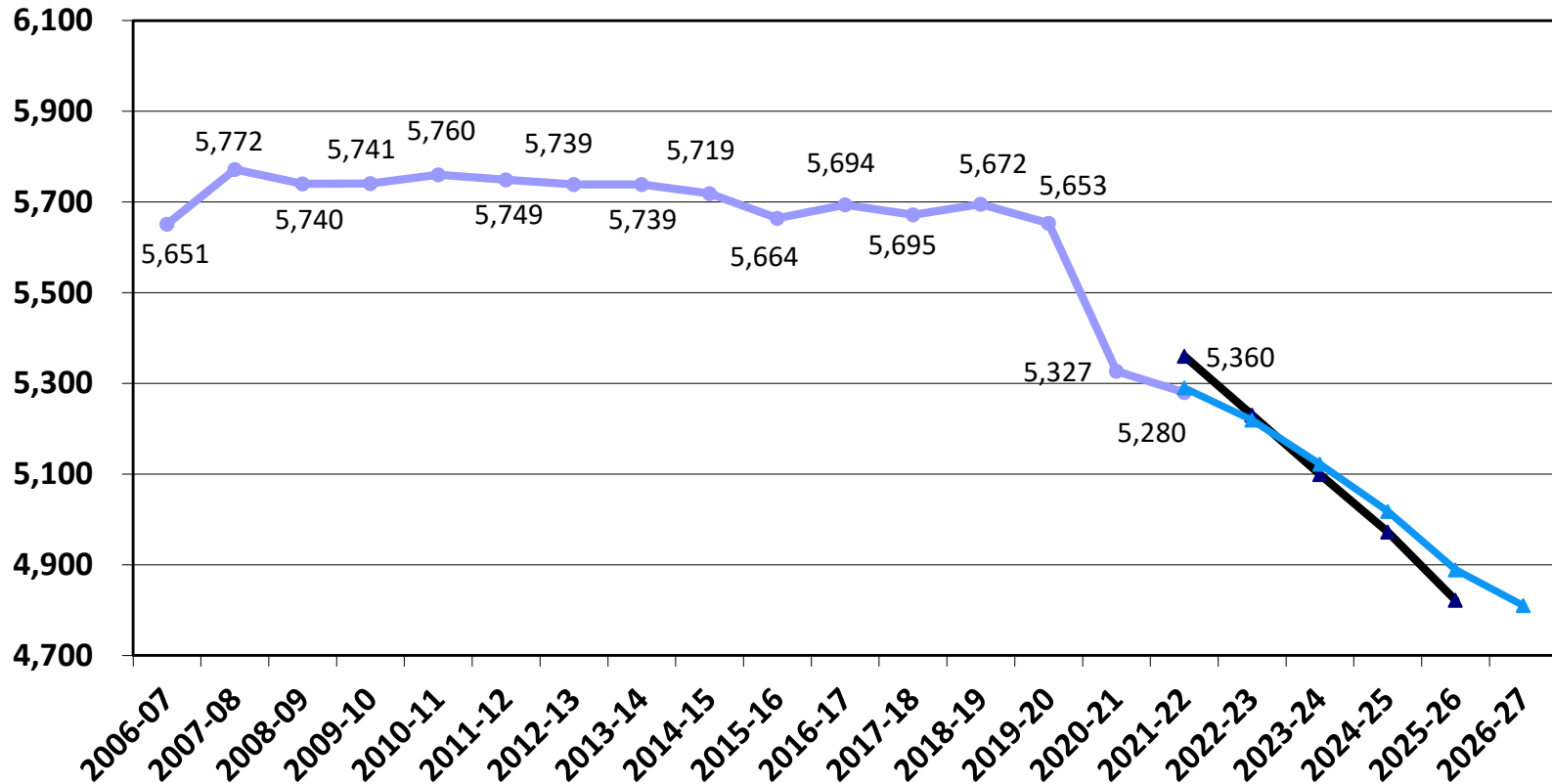
# Enrollment Projection Report

---

- Review of K-12 enrollment as of Oct. 1<sup>st</sup>
- Resident enrollment
- Open enrollment & tuition
- Nonpublic enrollment
- Fall vs. spring enrollment
- Review 2021-22 enrollment projection
- 2022-23 enrollment projection



# Historical and 2022-23 Projected K-12 Enrollment as of Oct. 1<sup>st</sup>



# Review of K-12 Enrollment as of Oct. 1<sup>st</sup>

---

- We are below last year's enrollment by 47 students.
- The five-year enrollment is a decline and currently averaging -83 students/year.
- Total enrollment decline for the past five years is -414 students or -7.30%.
- The totals are greatly skewed due to the COVID-19 pandemic

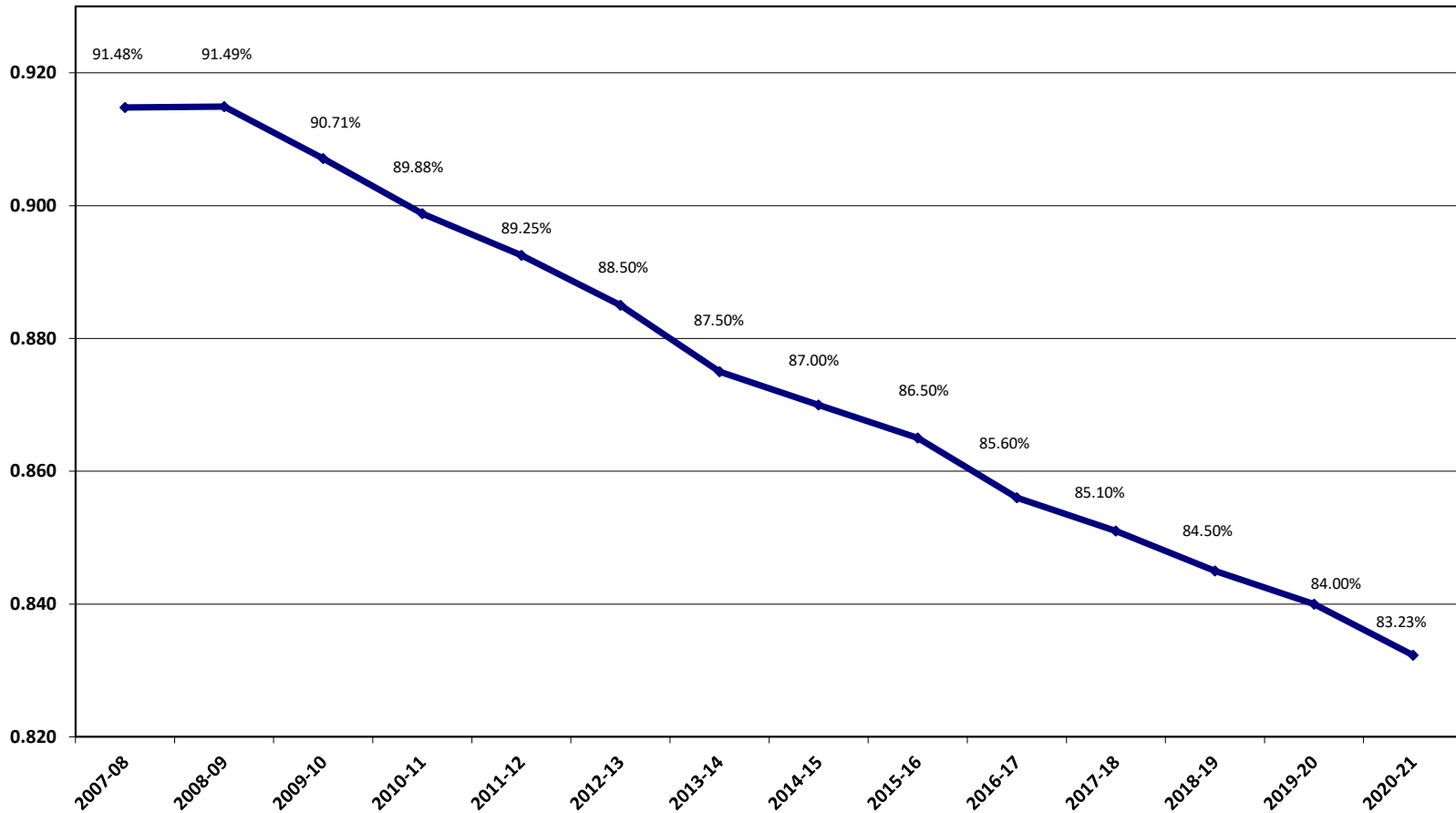
|                               | 2017-18 | 2018-19 | 2019-20 | 2020-21 | 2021-22 |
|-------------------------------|---------|---------|---------|---------|---------|
| <b>K-12 enrollment</b>        | 5,672   | 5,695   | 5,653   | 5,327   | 5,280   |
| <b>Change over prior year</b> | -22     | 23      | -42     | -326    | -47     |
| <b>% change</b>               | -.39%   | .41%    | -.74%   | -5.77%  | -.88%   |

# Total Resident Students Enrolled in ISD 877 as of June 30<sup>th</sup>

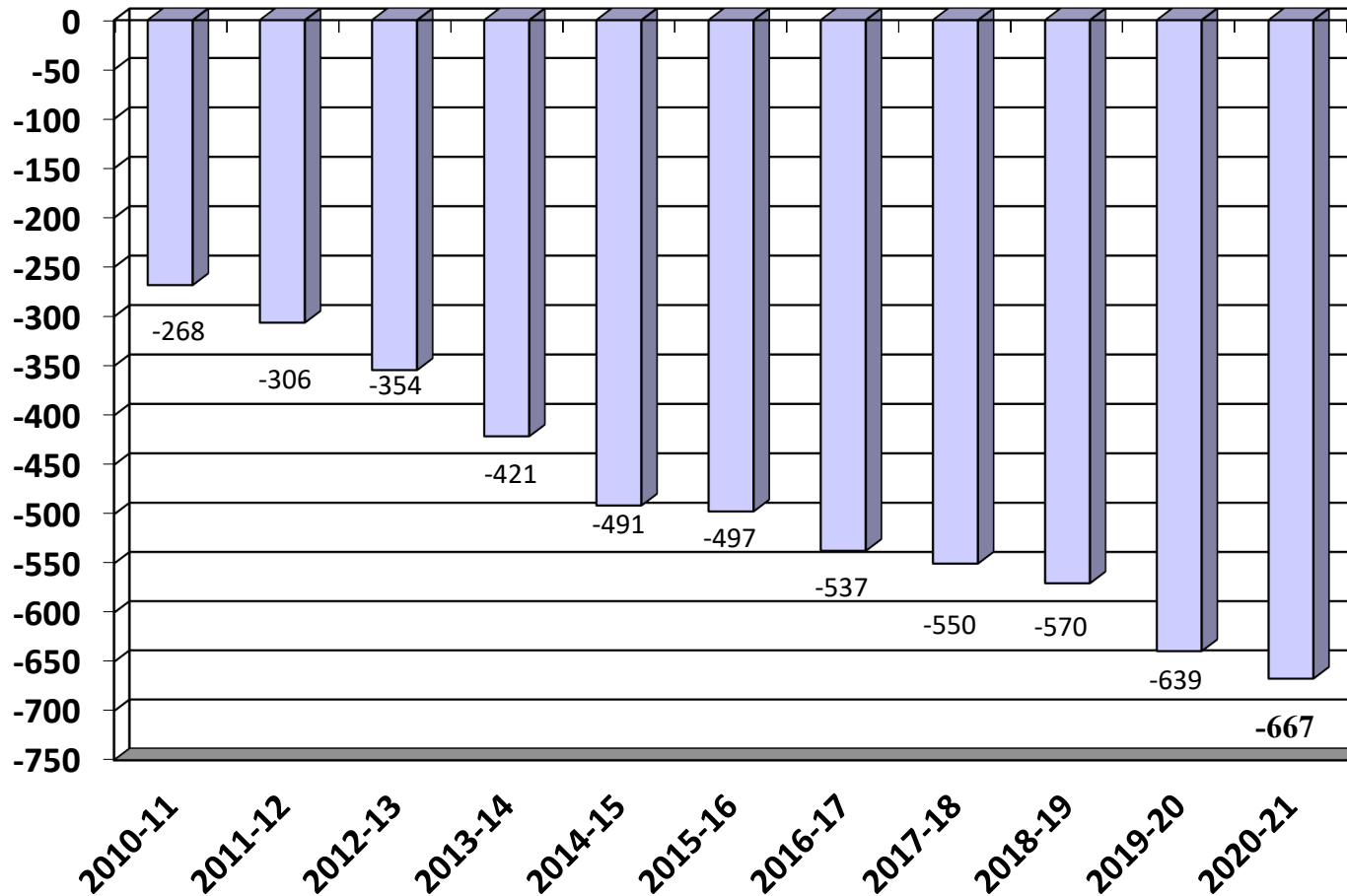
- BHM’s resident population and residents served population declined this past year. Residents served was at its second highest point in the last five years but still shows a decline in percentage served vs total population.

|                                     | 2016-17 | 2017-18 | 2018-19 | 2019-20 | 2020-21 |
|-------------------------------------|---------|---------|---------|---------|---------|
| <b>Residents served</b>             | 5,348   | 5,309   | 5,323   | 5,278   | 5,024   |
| <b>Residents going elsewhere</b>    | 902     | 931     | 980     | 1,007   | 1,012   |
| <b>Total Residents</b>              | 6,250   | 6,240   | 6,303   | 6,285   | 6,036   |
| <b>Change over prior year</b>       | 44      | 10      | 63      | -18     | -249    |
| <b>% change</b>                     | .71%    | -.16%   | 1.01%   | -.29%   | -3.96%  |
| <b>% Served vs Total Population</b> | 85.6%   | 85.1%   | 84.5%   | 84.0%   | 83.0%   |

# Total Resident Students Enrolled in ISD 877 as of June 30<sup>th</sup>



# Open Enrollment & Tuition Net Gain/Loss as of June 30<sup>th</sup>

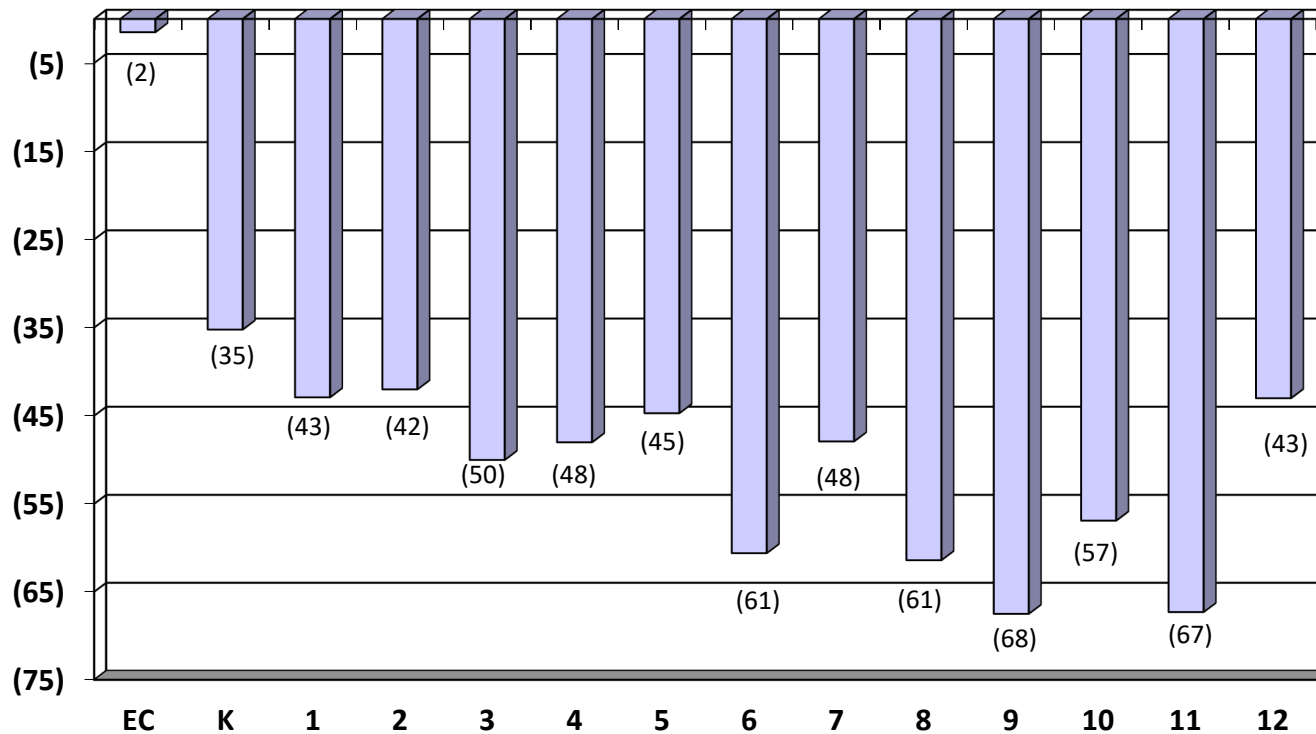


# 2020-21 Open Enrollment & Tuition Gain/Loss by District as of June 30<sup>th</sup>

| District                | In | Out | Net  | Prior Year | Targeted Services, Tuition, and Charter/Online |       |       |            |
|-------------------------|----|-----|------|------------|--|-------|-------|------------|
|                         |    |     |      |            | School/District                                | 20-21 | 19-20 | Difference |
| Delano                  | 4  | 157 | -153 | -154       | Southwest Metro Educational Coop               | -34   | -34   | 0          |
| Rockford                | 44 | 191 | -147 | -153       | Minnesota Transitions                          | -29   | -31   | 2          |
| St. Michael-Albertville | 69 | 170 | -101 | -66        | Jane Goodall Environmental Science             | -22   | -17   | -5         |
| Watertown-Mayer         | 4  | 57  | -53  | -57        | Wright Technical Center                        | -15   | -18   | 3          |
| Elk River               | 13 | 45  | -32  | -26        | Spectrum Charter High School                   | -15   | -14   | -1         |
| Osseo                   | 1  | 26  | -25  | -24        | Swan River Montessori                          | -9    | -7    | -2         |
| Orono                   | 0  | 17  | -17  | -18        | Houston  | -8    | -9    | 1          |
| Monticello              | 40 | 47  | -7   | 8          | Parnassus School                               | -8    | -7    | -1         |
| Becker                  | 3  | 1   | 2    | 1          | MAWSECO  | -7    | -8    | 1          |
| Waconia                 | 6  | 2   | 4    | 2          | Bluesky Charter School                         | -6    | -5    | -1         |
| Anoka-Hennepin          | 8  | 4   | 4    | 0          | Kaleidoscope School                            | -6    | -5    | -1         |
| Big Lake                | 9  | 3   | 6    | 5          | Minnesota Online HS                            | -3    | -3    | 0          |
| Dassel-Cokato           | 9  | 3   | 6    | 3          | Eagle Ridge Academy                            | -2    | -5    | 3          |
| Annandale               | 15 | 2   | 13   | 9          |  |       |       |            |
| Howard Lake-W-W         | 52 | 38  | 14   | 3          |  |       |       |            |
| Maple Lake              | 56 | 29  | 27   | 41         |  |       |       |            |



# 2020-21 Open Enrollment & Tuition by Grade as of June 30<sup>th</sup>

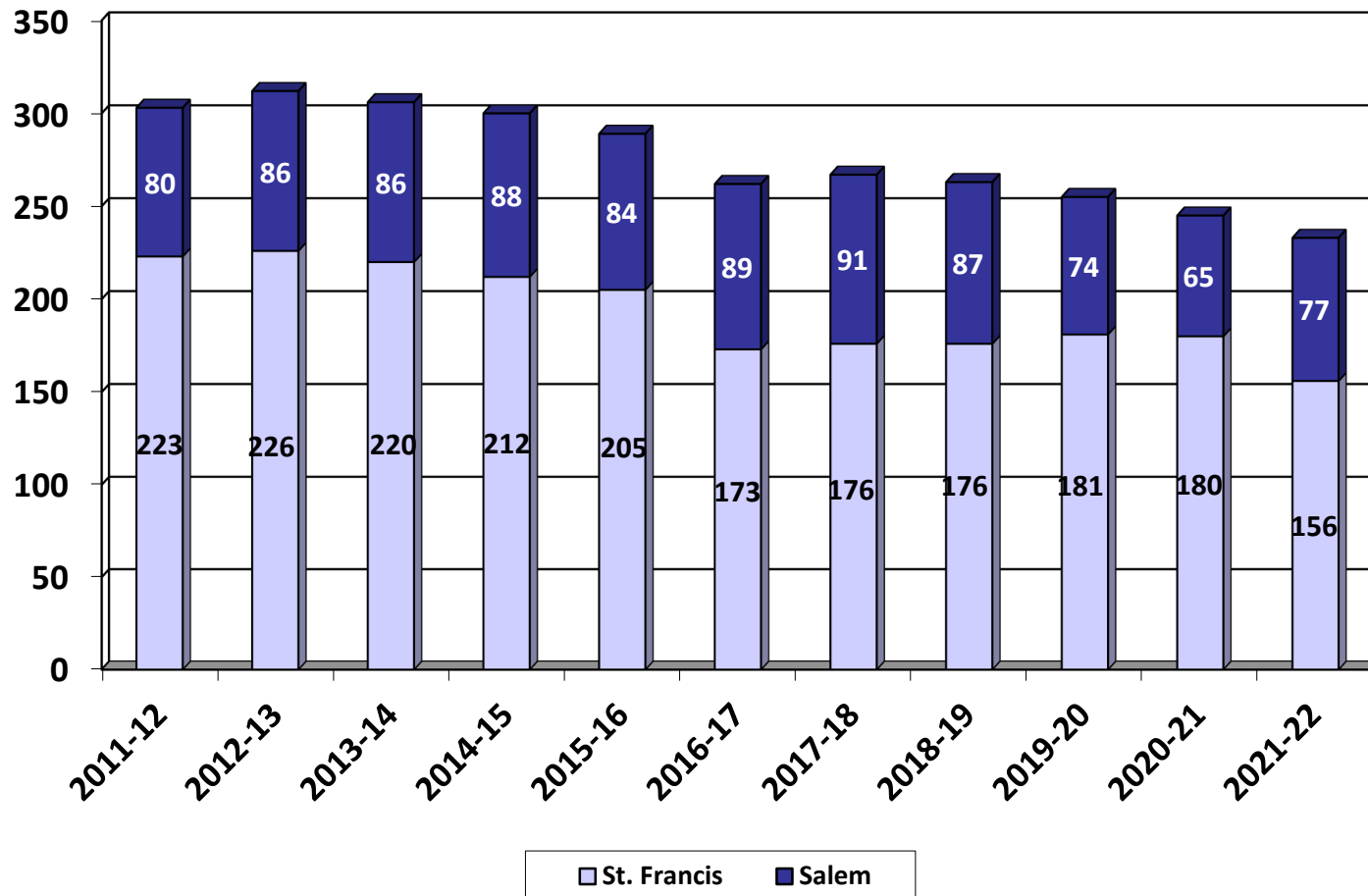


# Nonpublic History

- Two nonpublic schools in the BHM district: St. Francis Xavier in Buffalo and Salem Lutheran in Greenfield.
- Both schools serve students from kindergarten through 8<sup>th</sup> grade.
- Homeschool totals not graphed below were 205 on 10/1/16, 184 on 10/1/17, 206 on 10/1/18, 220 on 10/1/19, 449 on 10/1/2020, and 343 on 10/1/2021.

|                    | 12-13      | 13-14      | 14-15      | 15-16      | 16-17      | 17-18      | 18-19      | 19-20      | 20-21      | 21-22      |
|--------------------|------------|------------|------------|------------|------------|------------|------------|------------|------------|------------|
| <b>Salem</b>       | 86         | 86         | 88         | 84         | 89         | 91         | 87         | 74         | 65         | 77         |
| <b>St. Francis</b> | 226        | 220        | 212        | 205        | 173        | 176        | 176        | 181        | 180        | 156        |
| <b>Total</b>       | <b>312</b> | <b>306</b> | <b>300</b> | <b>289</b> | <b>262</b> | <b>267</b> | <b>263</b> | <b>255</b> | <b>245</b> | <b>233</b> |
| <b># Change</b>    | 9          | -6         | -6         | -11        | -27        | 5          | -4         | -4         | -10        | -12        |
| <b>% Change</b>    | 2.97%      | -0.92%     | -1.96%     | -3.67%     | -9.34%     | 1.91%      | -1.50%     | -1.50%     | -3.92%     | -4.90%     |

# Nonpublic History



# 2020-21 Enrollment Fall vs. Spring

---

- Historically, the district's K-12 enrollment decreases from October 1 to June 1.
- Most of the enrollment drops happen in grades 9-12.
- 2020-21 was an unusual year for starting and ending student numbers. Unlike other years, students continued to enroll in school as the Covid-19 Pandemic allowed for consistent in person classroom instruction later in the school year.

|                 | <b>Oct. 1<sup>st</sup>, 2020</b> | <b>Jun. 1<sup>st</sup>, 2021</b> | <b>Net</b> |
|-----------------|----------------------------------|----------------------------------|------------|
| <b>K</b>        | 348                              | 352                              | 4          |
| <b>Gr. 1-5</b>  | 1,858                            | 1,874                            | 16         |
| <b>Gr. 6-8</b>  | 1,304                            | 1,315                            | 11         |
| <b>Gr. 9-12</b> | 1,817                            | 1,765                            | -52        |
| <b>Total</b>    | 5,327                            | 5,306                            | -21        |

# Historical Enrollment Fall vs. Spring

---

- The district had one flat year (2006-07) of enrollment growth. All other years have declined during the year.

|                | <b>K</b> | <b>Gr. 1-5</b> | <b>Gr. 6-8</b> | <b>Gr. 9-12</b> | <b>Net</b> |
|----------------|----------|----------------|----------------|-----------------|------------|
| <b>2010-11</b> | 1        | -11            | -10            | -63             | -83        |
| <b>2011-12</b> | -10      | -11            | -14            | -94             | -129       |
| <b>2012-13</b> | -2       | -14            | 1              | -86             | -101       |
| <b>2013-14</b> | 2        | -7             | 2              | -127            | -130       |
| <b>2014-15</b> | -10      | 6              | -8             | -89             | -101       |
| <b>2015-16</b> | 7        | 39             | -1             | -99             | -54        |
| <b>2016-17</b> | 3        | -16            | 10             | -110            | -113       |
| <b>2017-18</b> | 1        | 14             | -11            | -107            | -103       |
| <b>2018-19</b> | 9        | 20             | -3             | -71             | -45        |
| <b>2019-20</b> | -6       | -26            | -9             | -127            | -168       |
| <b>2020-21</b> | 4        | 16             | 11             | -52             | -21        |

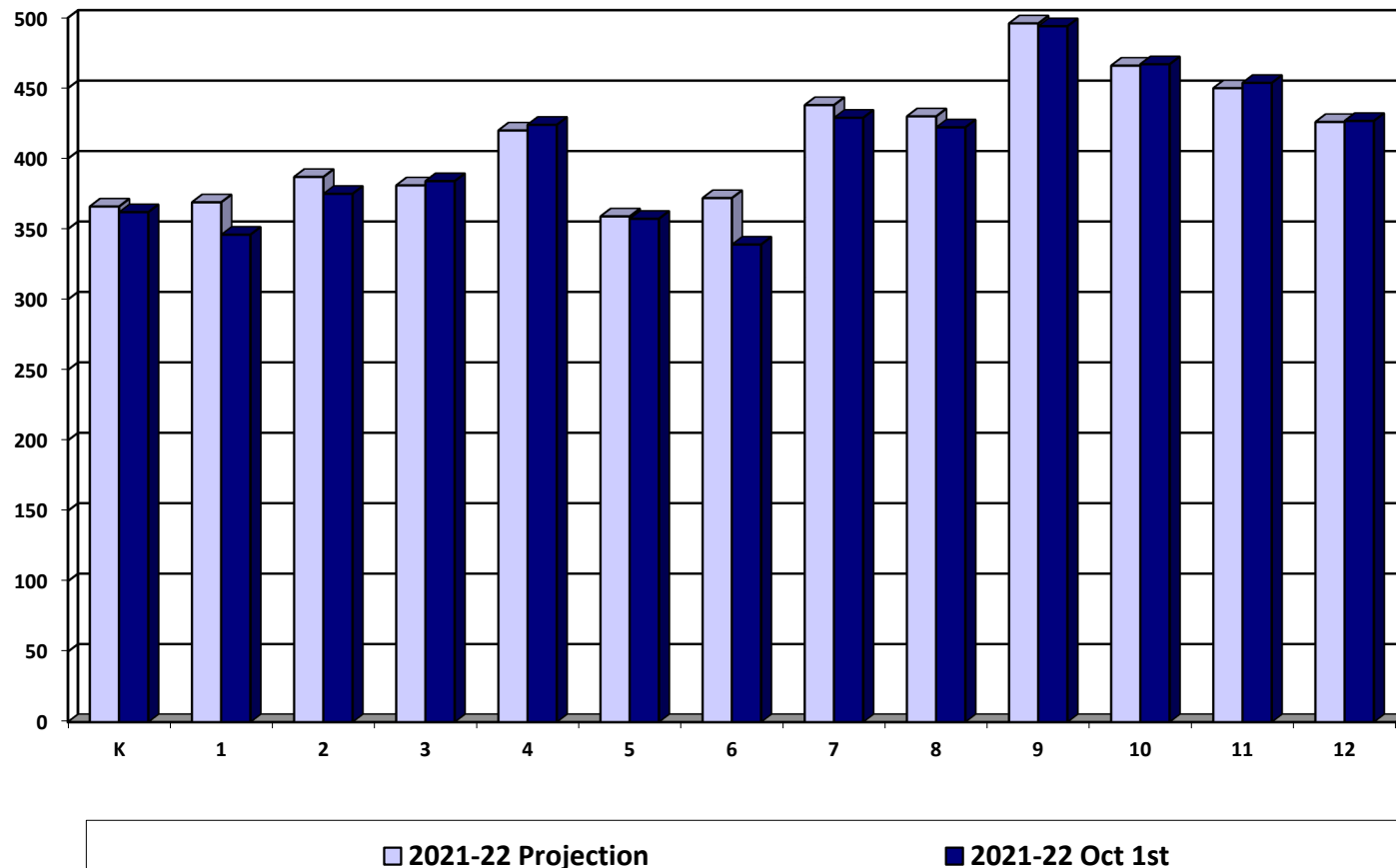
# Review of 2021-22 Enrollment Projection

---

- Last year's enrollment projection was over-estimated by 81 students.
- Our internal monthly enrollment reports adjust down post-secondary and shared time students.
- The official Oct. 1<sup>st</sup> MARSS submission by MDE will report a higher enrollment with post-secondary and shared time students.

|                 | <b>2021-22<br/>Projection</b> | <b>2021-22<br/>Oct. 1<sup>st</sup></b> | <b>Difference</b> |
|-----------------|-------------------------------|--|-------------------|
| <b>K</b>        | 366                           | 362                                    | -4                |
| <b>Gr. 1-5</b>  | 1,916                         | 1,886                                  | -30               |
| <b>Gr. 6-8</b>  | 1,240                         | 1,190                                  | -50               |
| <b>Gr. 9-12</b> | 1,838                         | 1,841                                  | 3                 |
| <b>Total</b>    | 5,360                         | 5,279                                  | -81               |

# Review of 2021-22 Enrollment Projection by Grade



# Enrollment Projection Data

---





# Enrollment Projection Data

---

- The district uses a combination of results from multiple enrollment projection models.
  
- The models allows schools to develop enrollment projections based on three different sets of data:
  - **October 1<sup>st</sup> MARSS submission**
  - **End of Year ADM** is generally used for financial forecast
  - **District Data** allows schools to enter enrollment history taken at any time, resident ADM or any other historical data by grade

# Kindergarten Projection Methods

---

- **Hold constant** maintains the 2021-22 kindergarten level.
- **Linear projection** is a straightforward mathematical projection based on nothing more than the past five years of data.
- **County birth method** uses the total number of live births in Wright County and examines what percentage of those births enroll in kindergarten. The projection is based on the average percentage of the last four years.
- **District-determined method** examines county birth rates in Wright County and compares that to actual student enrollment numbers in the District and projects that percentage for the next five years.

# Kindergarten Projection Methods

- Using Oct. 1<sup>st</sup> district data

|                                   | 17-18 | 18-19 | 19-20 | 20-21 | 21-22 | 22-23      | 23-24      | 24-25      | 25-26      | 26-27      |
|-----------------------------------|-------|-------|-------|-------|-------|------------|------------|------------|------------|------------|
| <b>Actual enrollment</b>          | 413   | 390   | 400   | 343   | 362   |            |            |            |            |            |
| <b>Hold constant</b>              |       |       |       |       |       | 362        | 362        | 362        | 362        | 362        |
| <b>Linear projection</b>          |       |       |       |       |       | 366        | 363        | 360        | 357        | 354        |
| <b>Wright Co. Avg. births</b>     |       |       |       |       |       | 362        | 365        | 358        | 351        | 347        |
| <b>District Determined Method</b> |       |       |       |       |       | <b>364</b> | <b>363</b> | <b>359</b> | <b>350</b> | <b>349</b> |

# Kindergarten Projection Methods

| Birth Year | Kdgn Enroll Year | Wright Co. Births | Actual Kdgn Enrollment | % of Wright Co. Births Enrolled |
|------------|------------------|-------------------|------------------------|---------------------------------|
| 2009       | 2014             | 1,949             | 417                    | 21.4%                           |
| 2010       | 2015             | 1,891             | 370                    | 19.6%                           |
| 2011       | 2016             | 1,855             | 358                    | 19.3%                           |
| 2012       | 2017             | 1,829             | 413                    | 22.6%                           |
| 2013       | 2018             | 1,784             | 391                    | 21.9%                           |
| 2014       | 2019             | 1,791             | 400                    | 22.3%                           |
| 2015       | 2020             | 1,799             | 343                    | 19.0%                           |
| 2016       | 2021             | 1,785             | 363                    | 20.3%                           |
| 2017       | 2022             | 1,705             | 364*                   | 20.9%*                          |
| 2018       | 2023             | 1,767             | 363*                   | 20.9%*                          |
| 2019       | 2024             | 1,730             | 359*                   | 20.9%*                          |
| 2020       | 2025             | 1,727             | 350*                   | 20.9%*                          |

\* Projected K enrollment based on County births-2-year average

# Enrollment Projection Methods

---

- After the kindergarten enrollment projection is complete, the overall K-12 enrollment is determined by a variety of methods:
  - Cohort Survival Method
  - Weighted Cohort Survival Method
  - Numerical Survival Method
  - Weighted Numerical Survival Method
  - Merged Method
  
- Due to the COVID pandemic, the enrollment projection results vary noticeably depending on how many years of historic data is used. The 2019-20 and 2020-21 were not normal and the student variances did not follow prior year trends.

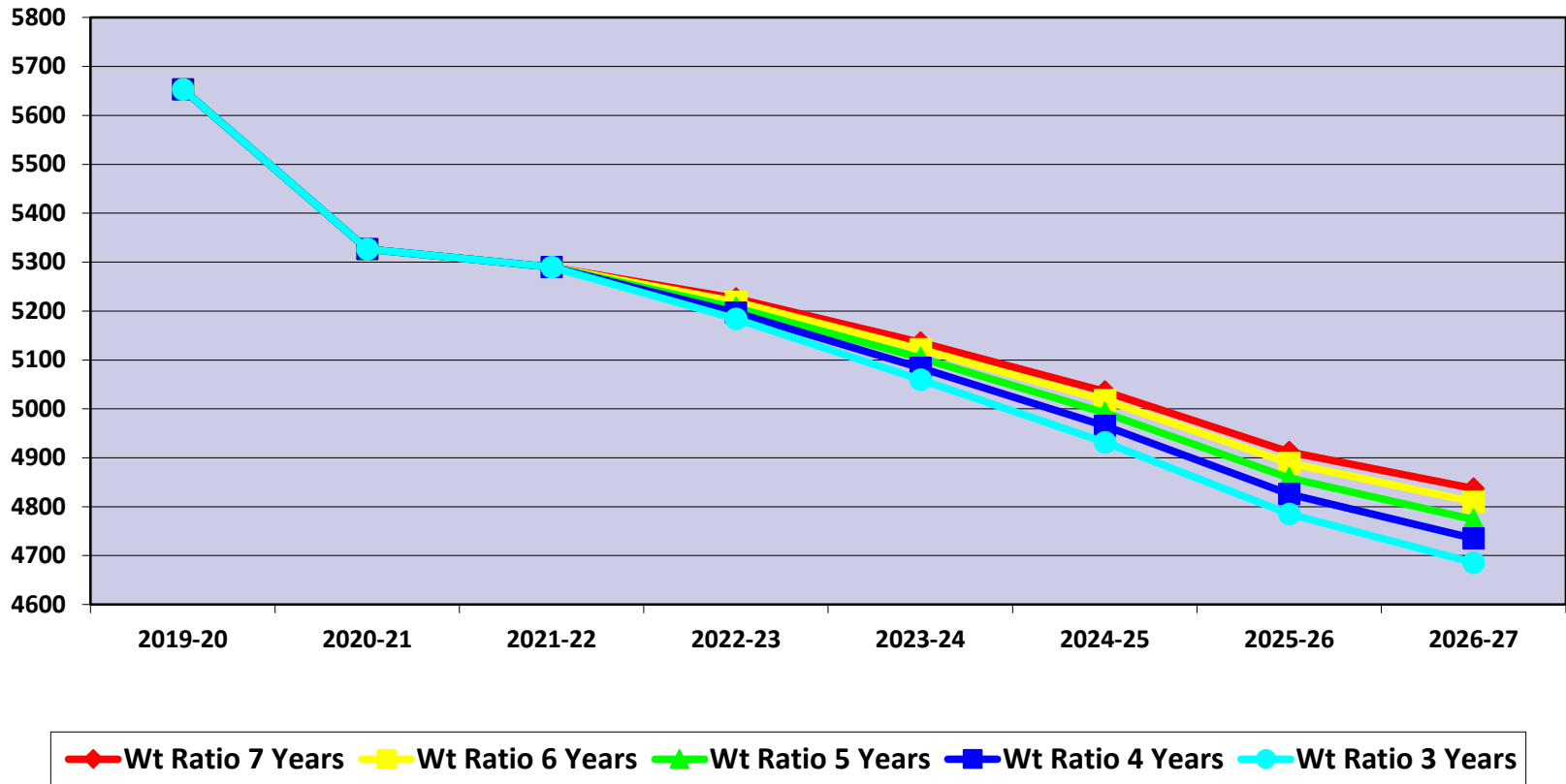
# Projection Methods Comparison

---

- Using Oct. 1<sup>st</sup> district data, eighteen different variations were examined.
- The following five were selected for detailed analysis:

|                         | <b>21-22</b> | <b>22-23</b> | <b>23-24</b> | <b>24-25</b> | <b>25-26</b> | <b>26-27</b> |
|-------------------------|--------------|--------------|--------------|--------------|--------------|--------------|
| <b>Wt Ratio 7 Years</b> | 5,360        | 5,226        | 5,136        | 5,036        | 4,912        | 4,837        |
| <b>Wt Ratio 6 Years</b> | 5,360        | 5,219        | 5,122        | 5,018        | 4,889        | 4,810        |
| <b>Wt Ratio 5 Years</b> | 5,360        | 5,207        | 5,104        | 4,992        | 4,859        | 4,774        |
| <b>Wt Ratio 4 Years</b> | 5,360        | 5,197        | 5,084        | 4,965        | 4,826        | 4,735        |
| <b>Wt Ratio 3 Years</b> | 5,360        | 5,184        | 5,060        | 4,932        | 4,785        | 4,686        |
| <b>Max Difference</b>   |              | 42           | 76           | 104          | 127          | 151          |

# Projection Methods Comparison



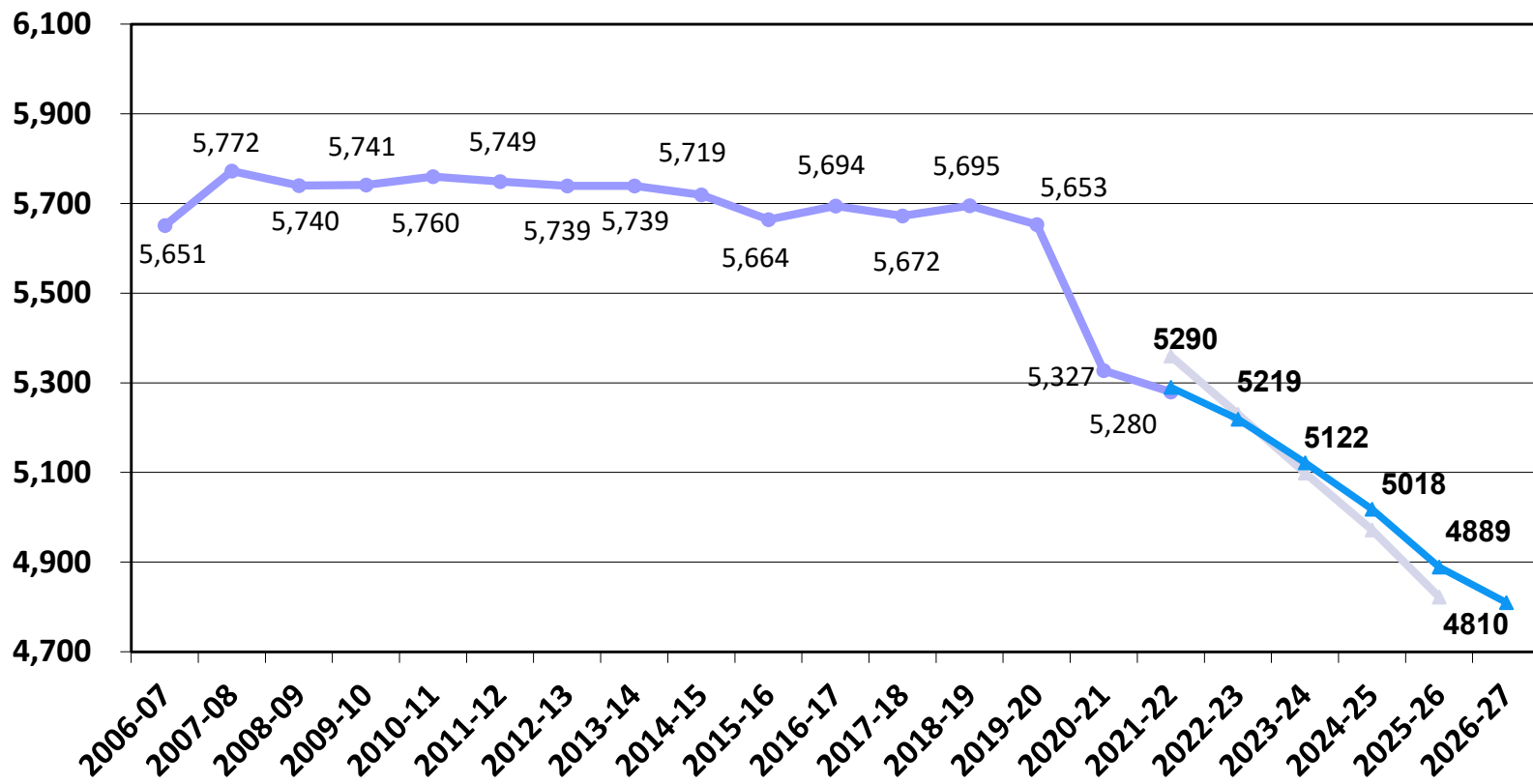
# 2022-23 Enrollment Projection

---

- Factors considered: housing market, economic conditions, the duration of the current pandemic, Wright County births, and open enrollment
  - Building permits by city:
    - Buffalo - 83 building permits issued during 2021 compared to 77 in 2020
    - Hanover - 60 building permits issued during 2021 compared to 17 in 2020
    - Montrose - 40 building permits issued during 2021 compared to 19 in 2020
  
- 4-year kindergarten attendance average 20.9%
  
- Weighted ratio 6 years
  
- K-12 Enrollment 5,219
  
- Decrease of 141 students or 2.63%



# Historical and 2022-23 Projected K-12 Enrollment as of Oct. 1<sup>st</sup>

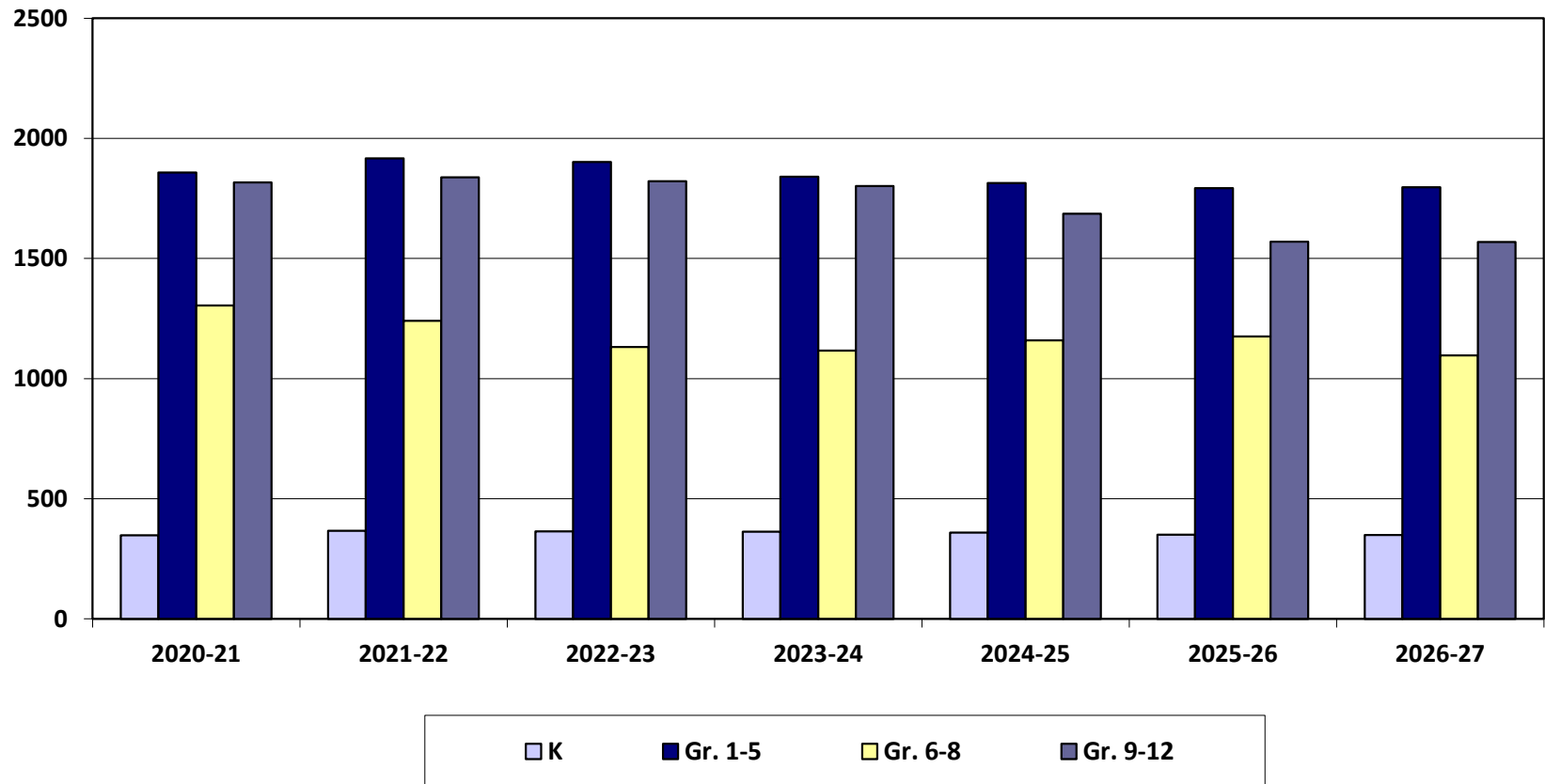


# 2022-23 Enrollment Projection by Grade Groupings

- With future enrollments, we need to consider building capacity:
  - BHS – 2,010
  - BCMS – 1,425
  - Elementary – 3,350

|                 | 2020-21 | 2021-22 | 2022-23 | 2023-24 | 2024-25 | 2025-26 | 2026-27 |
|-----------------|---------|---------|---------|---------|---------|---------|---------|
| <b>K</b>        | 343     | 366     | 364     | 363     | 359     | 350     | 349     |
| <b>Gr. 1-5</b>  | 1,863   | 1,916   | 1,902   | 1,840   | 1,814   | 1,793   | 1,797   |
| <b>Gr. 6-8</b>  | 1,318   | 1,240   | 1,132   | 1,117   | 1,159   | 1,176   | 1,096   |
| <b>Gr. 9-12</b> | 1,853   | 1,838   | 1,821   | 1,802   | 1,686   | 1,570   | 1,568   |
| <b>Total</b>    | 5,377   | 5,360   | 5,219   | 5,122   | 5,018   | 4,889   | 4,810   |
|                 | -318    | -17     | -141    | -97     | -104    | -129    | -79     |
|                 | -5.58%  | -0.32%  | -2.63%  | -1.86%  | -2.03%  | -2.57%  | -1.62%  |

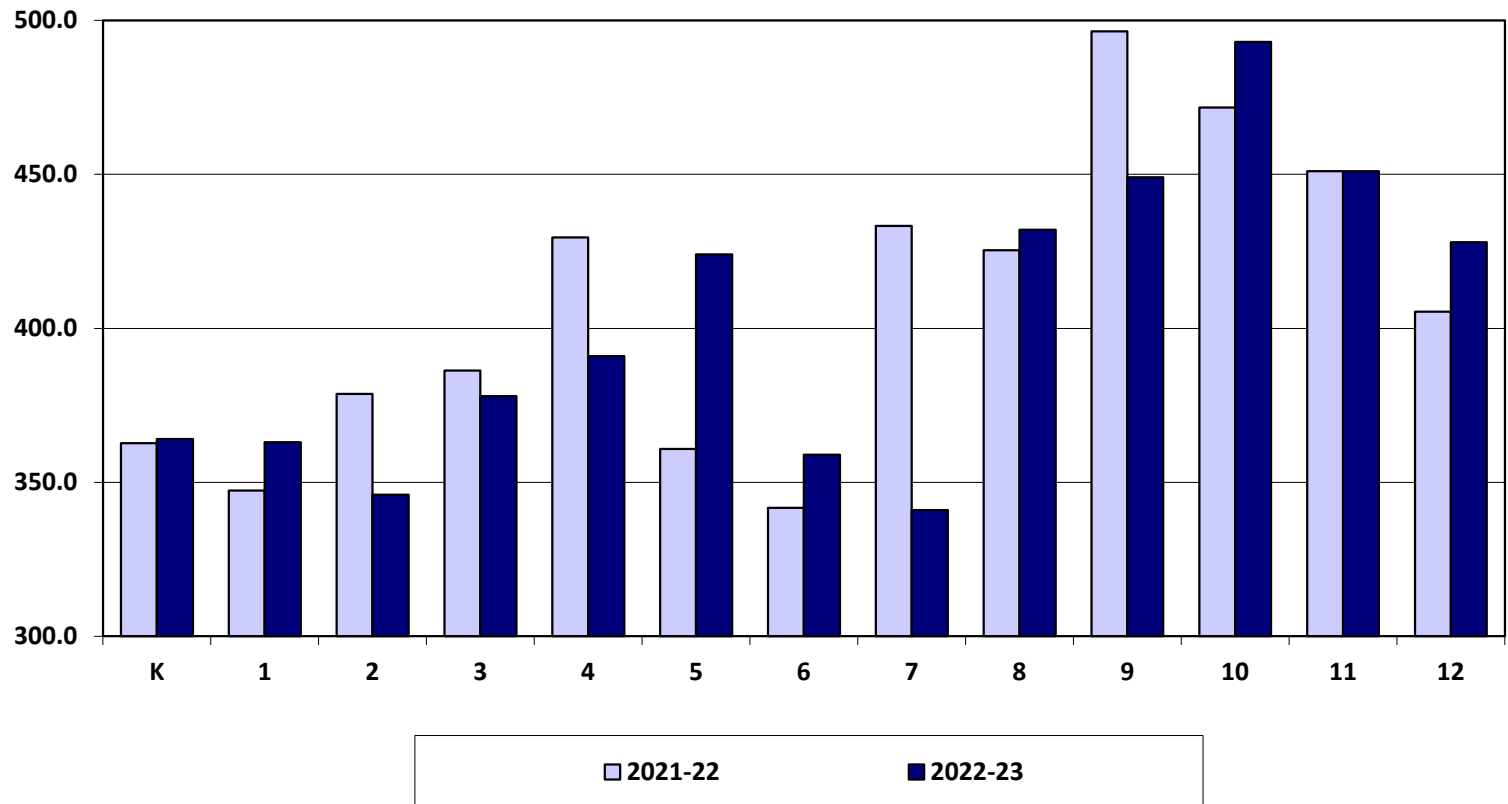
# 2022-23 Enrollment Projection by Grade Groupings



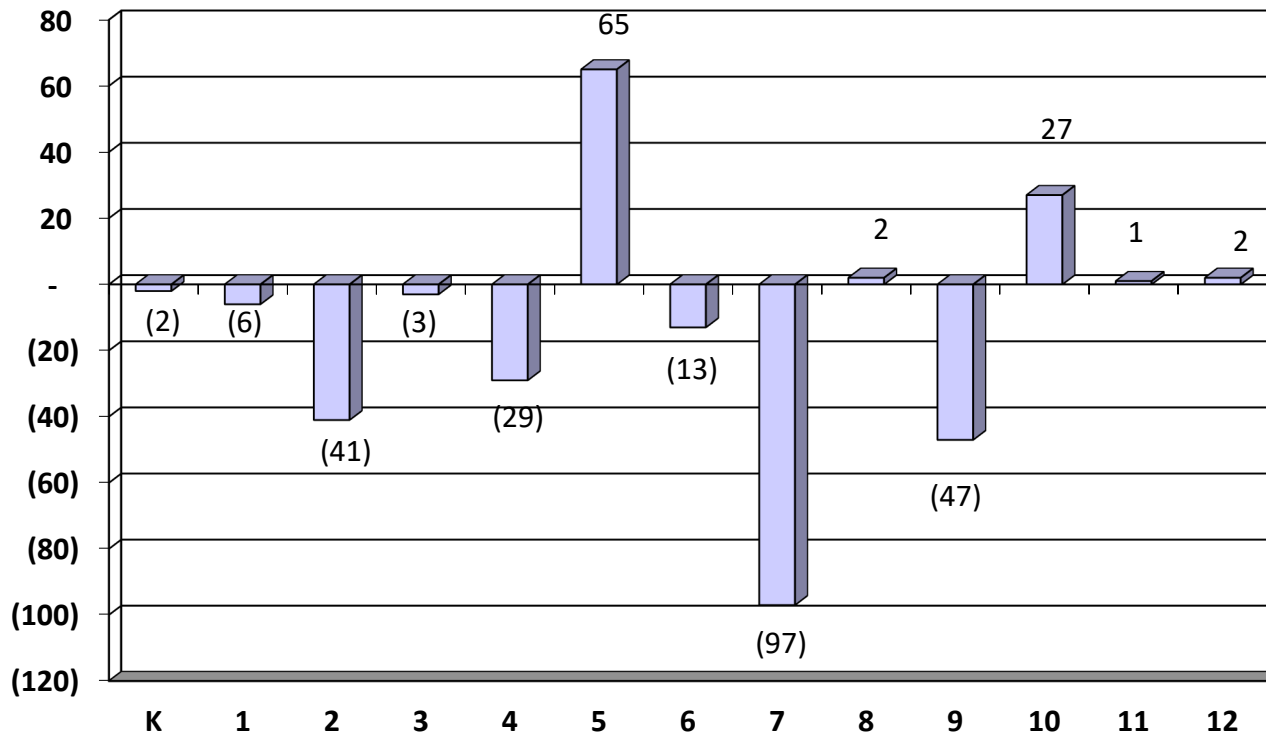
# 2022-23 Enrollment Projection by Grade

|       | 2021-22 | 2022-23 | 2023-24 | 2024-25 | 2025-26 | 2026-27 |
|-------|---------|---------|---------|---------|---------|---------|
| K     | 366     | 364     | 363     | 359     | 350     | 349     |
| 1     | 369     | 363     | 365     | 364     | 360     | 351     |
| 2     | 387     | 346     | 362     | 363     | 362     | 358     |
| 3     | 381     | 378     | 345     | 361     | 362     | 361     |
| 4     | 420     | 391     | 382     | 349     | 365     | 367     |
| 5     | 359     | 424     | 386     | 377     | 344     | 360     |
| 6     | 372     | 359     | 421     | 384     | 375     | 342     |
| 7     | 438     | 341     | 357     | 419     | 382     | 373     |
| 8     | 430     | 432     | 339     | 356     | 419     | 381     |
| 9     | 496     | 449     | 456     | 359     | 376     | 442     |
| 10    | 466     | 493     | 446     | 453     | 356     | 374     |
| 11    | 450     | 451     | 471     | 426     | 433     | 340     |
| 12    | 426     | 428     | 429     | 448     | 405     | 412     |
| Total | 5,360   | 5,219   | 5,122   | 5,018   | 4,889   | 4,810   |

# 2021-22 Actual vs. 2022-23 Enrollment Projection by Grade



# 2022-23 Enrollment Change by Grade



# WADM Report

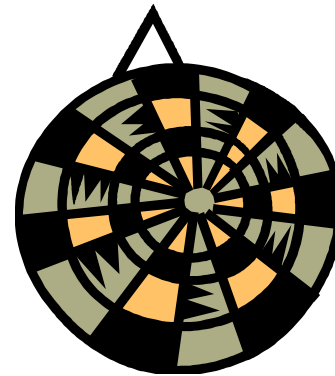
- The weighted average daily membership (WADM) projection shows a decline in student aid.
- Keep in mind the district’s enrollment history also tends to decline from Oct. 1<sup>st</sup> to June 1<sup>st</sup>.

|          | 2021-22 |       | 2022-23 |       | 2023-24 |       | 2024-25 |       | 2025-26 |       |
|----------|---------|-------|---------|-------|---------|-------|---------|-------|---------|-------|
|          | Enroll  | WADM  | Enroll  | WADM  | Enroll  | WADM  | Enroll  | WADM  | Enroll  | WADM  |
| K        | 366     | 366   | 364     | 364   | 363     | 363   | 359     | 359   | 350     | 350   |
| Gr. 1-3  | 1,137   | 1,137 | 1,087   | 1,087 | 1,072   | 1,072 | 1,088   | 1,088 | 1,084   | 1,084 |
| Gr. 4-6  | 1,151   | 1,151 | 1,174   | 1,174 | 1,189   | 1,189 | 1,110   | 1,110 | 1,084   | 1,084 |
| Gr. 7-8  | 868     | 1,042 | 773     | 928   | 696     | 835   | 775     | 930   | 801     | 961   |
| Gr. 9-12 | 1,838   | 2,206 | 1,821   | 2,185 | 1,802   | 2,162 | 1,686   | 2,023 | 1,570   | 1,884 |
| ECSE     | 60      | 60    | 60      | 60    | 60      | 60    | 60      | 60    | 60      | 60    |
| MCPU     |         | 5     |         | 46    |         | 33    |         | 31    |         | 41    |
| Total    | 5,420   | 5,967 | 5,279   | 5,844 | 5,182   | 5,714 | 5,078   | 5,601 | 4,949   | 5,464 |

# Conclusion

---

- Uncertain economic and environmental factors make enrollment projections difficult.
- BHM's enrollment is projected to decline over the next three to five years.



5,219