

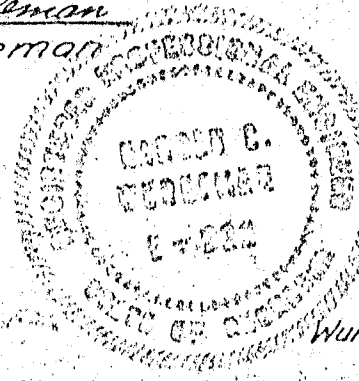
SURVEYOR'S CERTIFICATE:

The undersigned hereby certifies that this is a true and accurate plat of a survey made by him, that all corners are marked as shown and that all measurements are in feet and are correct to the best of his knowledge and belief.

Harold C. Wurdeman

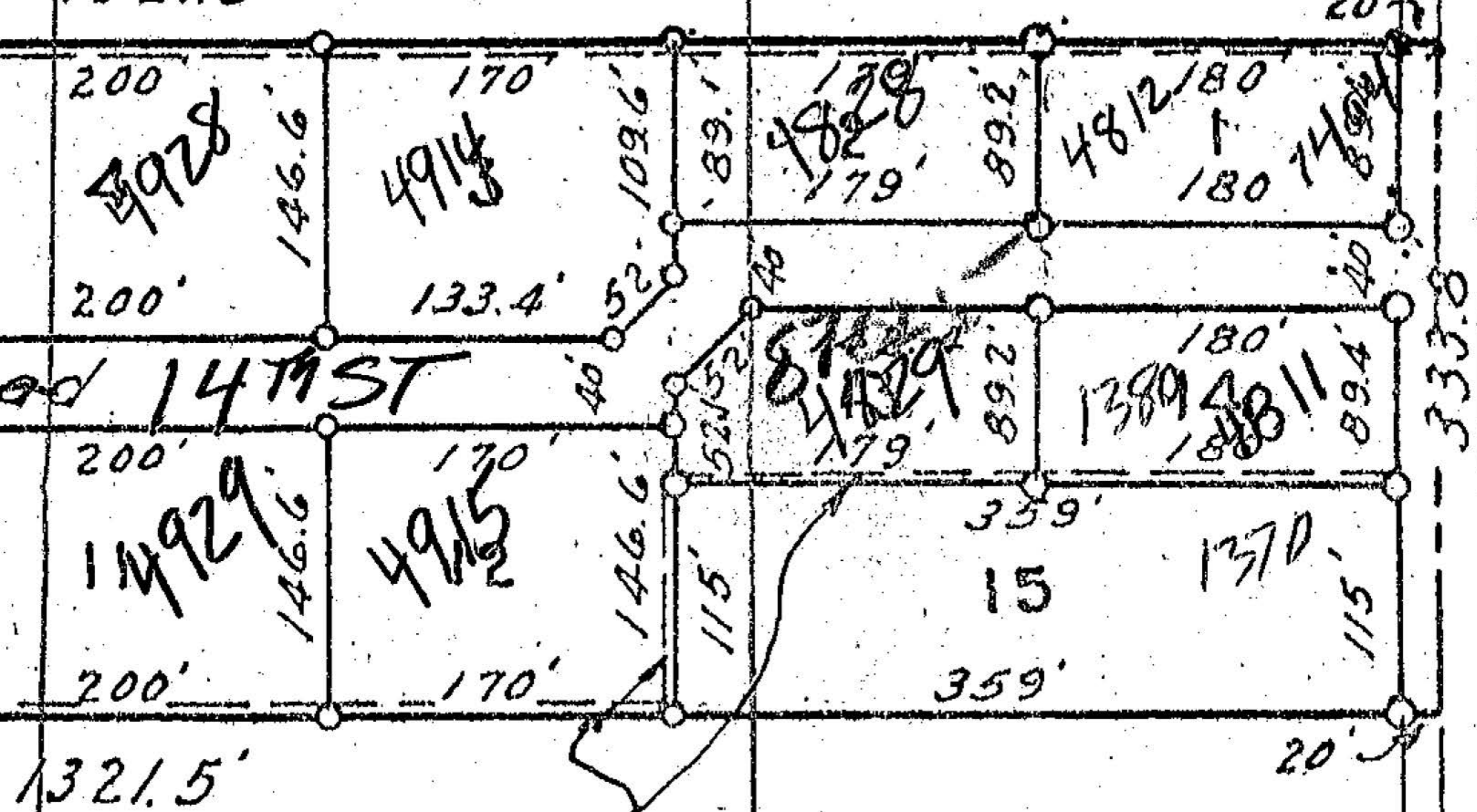
Harold C. Wurdeman
Civil Engineer
State of Nebr.
Cert. N^o E-222

Dated: Nov. 5, 1955



K & S SUBDIVISIC
PART OF NE $\frac{1}{4}$ SE $\frac{1}{4}$
SEC. 23, T17N, R1W
PLATTE COUNTY, NEBR.

Wurdeman and Wurdeman - Architect-Eng
Columbus, Nebr. Nov. 5, 1955 M.



OUTLINE

MUNICIPAL