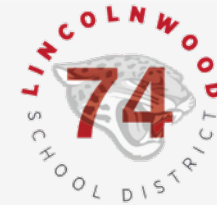


SOLAR  N EARTH.

Solar for Everyone, Everywhere

COMMUNITY SOLAR POWER



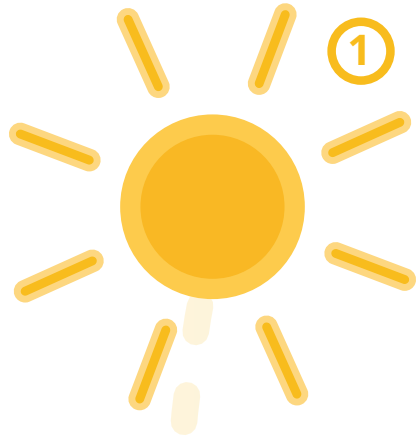
Courtney Whited
Chief School Business Official

Tysheen Roundtree
Community Solar Specialist
716-266-5208 | tysheen@solaronearth.com

Parker Johnson
Community Solar Specialist
618-554-5368 | parker@solaronearth.com

www.solaronearth.com | 844-765-2582

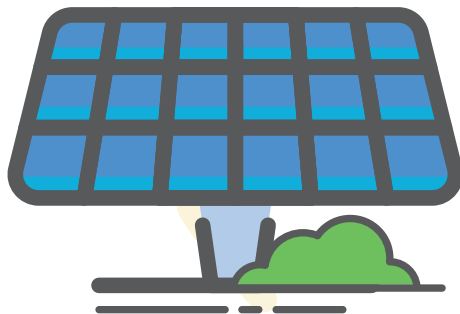




1 The Sun
Clean solar energy is available every day, even when it's cloudy.



Solar Energy



2 Solar Farms
Capture sunlight and convert it into lowcost, renewable electricity



Renewable Energy

How It Works



3 Utility Company
Transfers electricity from solar farms into the power grid

4 Homes and Local Businesses
Receive financial savings and reduce carbon emissions



Energy Credits
Subscriber's utility bills are credited with the electricity created by their share of the solar farm

SOLAR  EARTH.

Everyone Benefits from Community Solar

Whether you're a renter, homeowner, or business owner, Community Solar works for everyone. There's no need to build your own array to get the financial and environmental benefits of Community Solar.



Save Money

Save money on your electricity bill every year you are subscribed



Reduce CO2 Emissions

By helping to replace power generated using fossil fuels with clean, renewable solar energy



Boost Local Economy

Locally produced power also produces local jobs, boosting your community economy

1. SCHEDULE A CONSULT

An SOE Rep explains the process and answer any questions. During your consult, the SOE rep reviews your utility bill(s) and helps you sign up for a local Community Solar program.

2. WELCOME PACKET

After about 3 weeks from your consult, you receive a welcome packet from your solar farm.

3. RECEIVE YOUR FIRST BILL

Your electricity bill includes credits from the solar farm company at a reduced rate.

4. START SAVING

Enjoy your savings, month after month!

SIGN UP IS EASY

Community solar agreement aims to cut electricity costs, emissions across 31 Illinois fast food outlets

January 28, 2025 - Rachel Metea

A portfolio of 31 Wendy's and McDonald's locations across northern Illinois has locked in discounts on its energy bills potentially worth over \$1 million across 20 years in an agreement with community solar provider Perch Energy, the company said Jan. 23.

Community solar purchases allow businesses to reduce the greenhouse gas emissions of their electricity use without installing on-site solar. In June, the Wendy's Co. — which operates corporate-owned Wendy's restaurants and licenses franchise locations to owner-operators like All Star Management — announced that nearly 100 of its corporate-owned restaurants and 40 franchise locations in New York, Massachusetts and Illinois had enrolled in community solar provider Ampion Renewable Energy's solar-powered clean energy offering.

All Star Management's first round of subscriptions, announced Jan. 23, will purchase energy from two community solar projects with nearly 8 megawatts of combined capacity to supply its locations in Chicago's western and

"It was an easy decision. A lot of our restaurants are open early and close late. And some are open 24 hours a day, so we use a lot of electricity,"
All Star Management Owner Mike Allegro said in a statement.

southern suburbs. The deal could produce about "half a million dollars of savings" for All Star Management, Perch Energy said. Expected future capacity additions could allow All Star to double its savings to an estimated \$1 million over 20 years, Perch and All Star Management said.

Perch Energy has more than 36,000 active subscriptions in the United States drawing power from nearly 200 community solar projects in the Northeast, Mid-Atlantic and Midwest, Stewart said.



Wendy's and McDonald's locations in Northern Illinois are partnering with Perch Energy to enroll in community solar. The 31 restaurants are estimated to save over \$20,000 annually for 20 years on their electricity costs, the company says. Courtesy of Perch Energy

All Star Management connected with Perch Energy through **Solar On Earth**, a community solar customer acquisition provider that works with Perch in six states, the companies said.

Illinois Shines, a clean energy program administered by the Illinois Power Agency, approved the community solar projects involved in this agreement. Individuals, businesses, nonprofits and institutions can participate in Illinois Shines-approved community solar programs, the agency says.

excerpts from: pv-magazine-usa.com

For Questions, Support, and Outages visit ComEd.com
 1.877.4COMEDI (1.877.426.6331)
 1.800.95.LUCES (1.800.955.8237)
 1.800.572.5789 (TTY)

English
 Español
 Hearing/Speech Impaired

Payment Deducted on 9/9/24 **\$46,093.97**

1 SERVICE ADDRESS 123 W Sun St Chicago Heights, IL 60411
 Electric Choice ID: 0000000000 **\$50,096.41**

METER INFORMATION		Load Type	Reading Type	Previous	Present	Difference	Multiplier	Usage
Read Dates	Meter Number	General Service	Off Pk kW	Actual	Actual			1034
7/10-8/8	000000000	General Service	On Pk kW	Actual	Actual			1116
7/10-8/8	000000000	General Service	Total kWh	Actual	Actual			395500

RENEWABLE COMMUNITY SUPPLY DETAILS		Phone Number	Generation kWh	Total Credit
Generation Period	Project Name	844.765.2582	110666.70059	-\$7,599.65
05/14 - 06/13	DG Pontiac 2 LLC	844.765.2582	121646.47338	-\$8,163.53
06/13 - 07/15	DG Pontiac 2 LLC	844.765.2582	238663.75970	-\$16,016.92
06/10 - 07/10	DG Pontiac 1 LLC	844.765.2582	120056.48333	-\$8,244.32
05/09 - 06/10	DG Pontiac 1 LLC			

CHARGE DETAILS
 Retail Delivery Service - 0 to 100 kW 7/10/24 - 8/8/24 (29 Days) **\$23,394.50**

SUPPLY - ComEd
 Electric Supply Charge 395,500 kWh \$15,453.13
 Capacity Charge 1,129.06 kW X 0.91048 \$1,027.98
 Transmission Services Charge 395,500 kWh X 0.00982 \$3,883.81
 Misc Procurement Components Chg 395,500 kWh X 0.00058 \$229.39
 Purchased Electricity Adjustment \$2,800.18

DELIVERY - ComEd
 Customer Charge \$34.59
 Standard Metering Charge \$13.24
 Distribution Facility Charge 1116 kW X 14.94000 \$16,669.36
 IL Electricity Distribution Charge 395,500 kWh X 0.00124 \$490.42

TAXES & FEES
 Environmental Cost Recovery Adj 395,500 kWh X 0.00002 \$7.91
 Renewable Portfolio Standard 395,500 kWh X 0.00502 \$1,985.41
 Zero Emission Standard 395,500 kWh X 0.00195 \$771.23
 Carbon-Free Energy Resource Adj 395,500 kWh X 0.00475 \$1,878.63

Energy Efficiency Programs 395,500 kWh X 0.00835 \$3,302.43
 Energy Transition Assistance 395,500 kWh X 0.00072 \$284.76
 State Tax \$1,263.95
Service Period Total \$50,096.41

MISCELLANEOUS
 Community Solar Credit -\$7,599.65
 Community Solar Credit -\$16,016.92
 Community Solar Credit -\$8,244.32
 Community Solar Credit -\$8,163.53
 Community Solar Subscription \$36,021.98
Total Amount Due \$46,093.97

Community Solar Credits

Sample ComEd Bill

Total Cost Breakdown:

Total before Community Solar	\$50,096.41
Total Community Solar credits	-\$4,002.44
Total after Community Solar	\$46,093.97

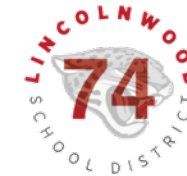
Community Solar Savings \$4,002.44

What Community Solar can do...

Due to capacity constraints this offer is only valid for 45 days.

Customer Annual Usage		2,331,110
Solar Offset Percentage	90%	2,097,999
Output Yield (kWh/kW)		1,350
Current ABC Value (\$/kWh)		\$0.034
Annual Utility Rate Escalator - Low Case		0.5%
Annual Utility Rate Escalator - High Case		4.0%
Annual Output Degradation		0.50%
ABC Rate Discount		20.0%
Customer System Size		1554.07

# of Accounts	1
Delivery Rate	0.034
Est. Delivery Spend	\$78,377



Estimated Savings - 20% NC
(Based on bill provided by client - Delivery Only)

Operating Year	Annual System Output (kWh)	Utility ABC Value Low (\$/kWh)	Utility ABC Value High (\$/kWh)	Solar ABC Purchase Rate Low (\$/kWh)	Solar ABC Purchase Rate High (\$/kWh)	Total Estimated Savings Low (\$)	Total Estimated Savings High (\$)	Cumulative Savings Low (\$)	Cumulative Savings High (\$)
1	2,097,999	\$0.034	\$0.034	\$0.027	\$0.027	\$14,108	\$14,108	\$14,108	\$14,108
2	2,087,509	\$0.034	\$0.035	\$0.027	\$0.028	\$14,107	\$14,599	\$28,215	\$28,707
3	2,077,071	\$0.034	\$0.036	\$0.027	\$0.029	\$14,107	\$15,107	\$42,322	\$43,813
4	2,066,686	\$0.034	\$0.038	\$0.027	\$0.030	\$14,107	\$15,633	\$56,429	\$59,446
5	2,056,353	\$0.034	\$0.039	\$0.027	\$0.031	\$14,106	\$16,177	\$70,535	\$75,622
6	2,046,071	\$0.034	\$0.041	\$0.028	\$0.033	\$14,106	\$16,739	\$84,642	\$92,362
7	2,035,841	\$0.035	\$0.043	\$0.028	\$0.034	\$14,106	\$17,322	\$98,747	\$109,684
8	2,025,661	\$0.035	\$0.044	\$0.028	\$0.035	\$14,105	\$17,925	\$112,853	\$127,609
9	2,015,533	\$0.035	\$0.046	\$0.028	\$0.037	\$14,105	\$18,549	\$126,958	\$146,157
10	2,005,455	\$0.035	\$0.048	\$0.028	\$0.038	\$14,105	\$19,194	\$141,062	\$165,351
11	1,995,428	\$0.035	\$0.050	\$0.028	\$0.040	\$14,104	\$19,862	\$155,166	\$185,213
12	1,985,451	\$0.036	\$0.052	\$0.028	\$0.041	\$14,104	\$20,553	\$169,270	\$205,767
13	1,975,524	\$0.036	\$0.054	\$0.029	\$0.043	\$14,104	\$21,268	\$183,374	\$227,035
14	1,965,646	\$0.036	\$0.056	\$0.029	\$0.045	\$14,103	\$22,009	\$197,477	\$249,044
15	1,955,818	\$0.036	\$0.058	\$0.029	\$0.047	\$14,103	\$22,775	\$211,580	\$271,818
16	1,946,039	\$0.036	\$0.061	\$0.029	\$0.048	\$14,103	\$23,567	\$225,683	\$295,385
17	1,936,309	\$0.036	\$0.063	\$0.029	\$0.050	\$14,102	\$24,387	\$239,785	\$319,772
18	1,926,627	\$0.037	\$0.065	\$0.029	\$0.052	\$14,102	\$25,236	\$253,886	\$345,008
19	1,916,994	\$0.037	\$0.068	\$0.029	\$0.054	\$14,101	\$26,114	\$267,988	\$371,122
20	1,907,409	\$0.037	\$0.071	\$0.030	\$0.057	\$14,101	\$27,023	\$282,089	\$398,145
20 Year Total	40,025,423					\$282,089	\$398,145		

3,202,034
Pounds of CO₂
Reduced per year¹

69,309
Equivalent
Trees per year²

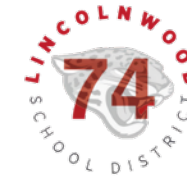
320
Cars Off the
Road per year³

¹Every kWh of solar energy reduces CO₂ emissions by 1.6 lbs. ²One mature tree reduces CO₂ emissions by 46 lbs/year. ³A typical gas-powered passenger vehicle emits about 10,000 pounds of CO₂ per year.

What Community Solar can do...

Customer Annual Usage		2,331,110
Solar Offset Percentage	93%	2,167,932
Output Yield (kWh/kW)		1,350
Current ABC Value (\$/kWh)		\$0.034
Annual Utility Rate Escalator - Low Case		0.5%
Annual Utility Rate Escalator - High Case		4.0%
Annual Output Degradation		0.50%
ABC Rate Discount		10.0%
Customer System Size		1605.88

# of Accounts	1
Delivery Rate	0.034
Est. Delivery Spend	\$78,377



Estimated Savings - 10% NC
(Based on bill provided by client - Delivery Only)

Operating Year	Annual System Output (kWh)	Utility ABC Value Low (\$/kWh)	Utility ABC Value High (\$/kWh)	Solar ABC Purchase Rate Low (\$/kWh)	Solar ABC Purchase Rate High (\$/kWh)	Total Estimated Savings Low (\$)	Total Estimated Savings High (\$)	Cumulative Savings Low (\$)	Cumulative Savings High (\$)
1	2,167,932	\$0.034	\$0.034	\$0.030	\$0.030	\$7,289	\$7,289	\$7,289	\$7,289
2	2,157,093	\$0.034	\$0.035	\$0.030	\$0.031	\$7,289	\$7,543	\$14,578	\$14,832
3	2,146,307	\$0.034	\$0.036	\$0.031	\$0.033	\$7,289	\$7,805	\$21,867	\$22,637
4	2,135,576	\$0.034	\$0.038	\$0.031	\$0.034	\$7,288	\$8,077	\$29,155	\$30,714
5	2,124,898	\$0.034	\$0.039	\$0.031	\$0.035	\$7,288	\$8,358	\$36,443	\$39,072
6	2,114,273	\$0.034	\$0.041	\$0.031	\$0.037	\$7,288	\$8,649	\$43,731	\$47,720
7	2,103,702	\$0.035	\$0.043	\$0.031	\$0.038	\$7,288	\$8,950	\$51,019	\$56,670
8	2,093,183	\$0.035	\$0.044	\$0.031	\$0.040	\$7,288	\$9,261	\$58,307	\$65,931
9	2,082,717	\$0.035	\$0.046	\$0.031	\$0.041	\$7,288	\$9,583	\$65,595	\$75,515
10	2,072,304	\$0.035	\$0.048	\$0.032	\$0.043	\$7,287	\$9,917	\$72,882	\$85,431
11	2,061,942	\$0.035	\$0.050	\$0.032	\$0.045	\$7,287	\$10,262	\$80,169	\$95,694
12	2,051,633	\$0.036	\$0.052	\$0.032	\$0.047	\$7,287	\$10,619	\$87,456	\$106,313
13	2,041,374	\$0.036	\$0.054	\$0.032	\$0.048	\$7,287	\$10,989	\$94,743	\$117,301
14	2,031,168	\$0.036	\$0.056	\$0.032	\$0.050	\$7,287	\$11,371	\$102,030	\$128,673
15	2,021,012	\$0.036	\$0.058	\$0.032	\$0.052	\$7,286	\$11,767	\$109,316	\$140,439
16	2,010,907	\$0.036	\$0.061	\$0.033	\$0.054	\$7,286	\$12,176	\$116,603	\$152,616
17	2,000,852	\$0.036	\$0.063	\$0.033	\$0.057	\$7,286	\$12,600	\$123,889	\$165,216
18	1,990,848	\$0.037	\$0.065	\$0.033	\$0.059	\$7,286	\$13,039	\$131,175	\$178,254
19	1,980,894	\$0.037	\$0.068	\$0.033	\$0.061	\$7,286	\$13,492	\$138,460	\$191,747
20	1,970,989	\$0.037	\$0.071	\$0.033	\$0.064	\$7,286	\$13,962	\$145,746	\$205,708
20 Year Total	41,359,604					\$145,746	\$205,708		

3,308,768
Pounds of CO₂
Reduced per year¹

71,930
Equivalent
Trees per year²

331
Cars Off the
Road per year³

¹Every kWh of solar energy reduces CO₂ emissions by 1.6 lbs. ²One mature tree reduces CO₂ emissions by 46 lbs/year. ³A typical gas-powered passenger vehicle emits about 10,000 pounds of CO₂ per year.

Who Does Community Solar?

In Illinois, Solar On Earth has helped thousands of electricity customers join a Community Solar project, save money, and reduce CO₂ emissions. This includes homeowners, renters, businesses, farms, municipalities, and schools.



Municipalities

- City of Albion
- City of Anna
- City of Cahokia Heights
- City of Canton
- City of Kewanee
- City of LaSalle
- City of Marion
- City of Mattoon
- City of Pekin
- City of Pontiac
- City of Robinson
- City of Sterling
- Coles County
- Fulton County
- Scott County
- Village of Arthur
- Village of Bartonville
- Village of Capron
- Village of Cahokia
- Village of Morton
- Village of New Lenox
- Village of Princeville



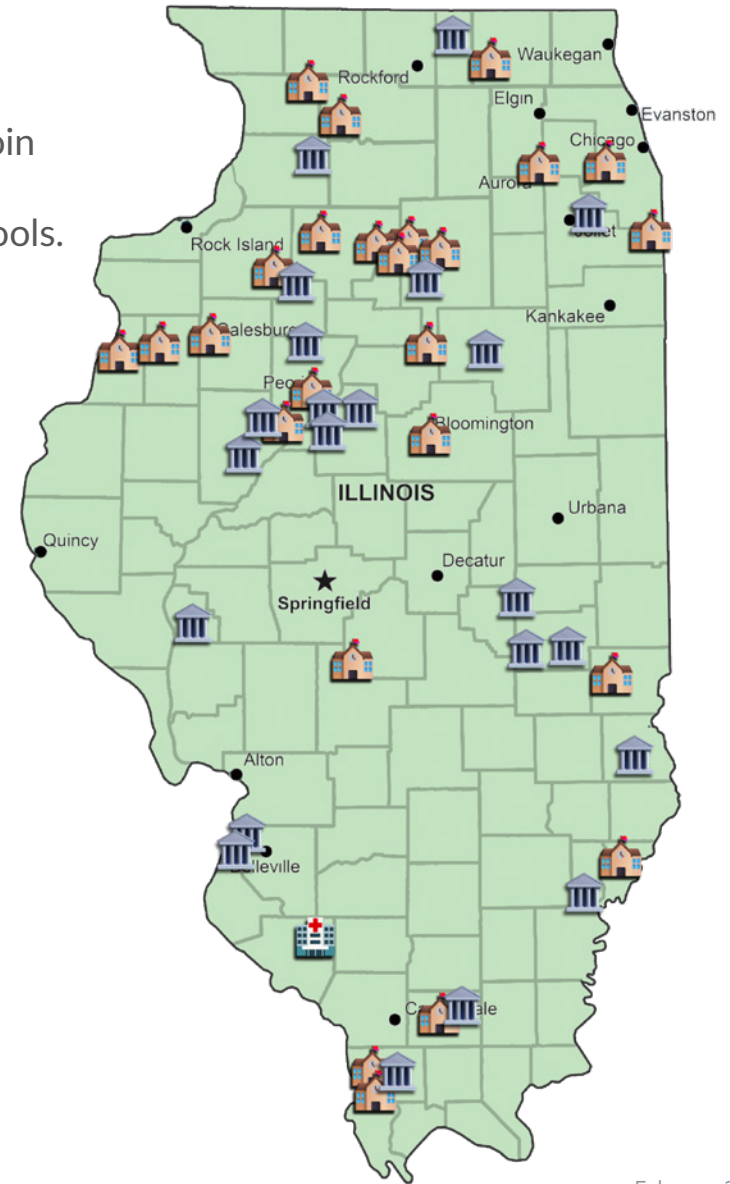
Hospitals

- Sparta Community Hospital



Schools

- Anna CCSD 37
- Anna-Jonesboro CHSD 81
- Brookfield/LaGrange Park SD 95
- Bureau Valley CUSD 340
- Canton CUSD 66
- Community CSD 168
- Eastland CUSD 308
- Fieldcrest CUSD 6
- Galesburg CUSD 205
- Hall High School
- Hutsonville CUSD 1
- Kewanee Community School 229
- LaSalle Elementary School District 122
- LaSalle Peru High School and Township
- Marengo Union Elementary CSD 165
- Marion CUSD 2
- Martinsville CUSD 3C
- McLean County USD 5
- Morrisonville CUSD 1
- Norwood School District 63
- Polo CUSD 222
- United CUSD 304
- Waltham CC School District 185
- West Aurora School District 129
- West Central CUSD 235



Plus co-branded marketing . . .



Let people know you support renewable energy!



Sound too good to be true? *It Isn't.*

Since 2015, Solar On Earth has helped people reduce CO₂ emissions by 100,000 metric tons, and over \$5 million each year.

www.solaronearth.com

Over 100,000 metric tons of CO₂ reduced each year since 2021

Make a profound impact on your
financial gains, and the environment



5 million trees

Each year, enough
carbon is saved to equal
the carbon processed
by 5 million trees



25,000 lives

Reducing pollutants can
prevent unnecessary
health care costs and save
more than 25,000 lives



\$275 million

Over the contract term, our
customers will save over
\$275 million

Contact Us

Solar On Earth (SOE) was formed in 2015 by seasoned solar veterans who were on the forefront in recognizing the opportunity Community Solar offered. Over the past decade, we have expanded our presence to over a dozen states from Maine to Hawaii. We've helped homeowners and renters to large manufacturers and municipalities benefit from Community Solar subscriptions from the top solar developers in the country. Connect with us online, in person, or over the phone. Together, we can transform your access to clean energy.

Social Media



solaronearth

facebook.com/solaronearth



solaronearth

instagram.com/solaronearth



solar-on-earth

www.linkedin.com/company/solar-on-earth

321 Billerica Road, Suite 100, Chelmsford, MA 01824

701 Calvert Ave., Chadwick, IL 61014

www.solaronearth.com

SOLAR ON EARTH®

Our Mission: To promote clean energy alternatives through education, accessibility, and a positive customer experience focused on community engagement and investment for all.



YMCA Healthy Kids Day



Household Goods, Inc



Earth Day Clean-Up Crew



Holiday Gift Drive



Food Pantry Support