

**Kalmiopsis Community
Arts High School**



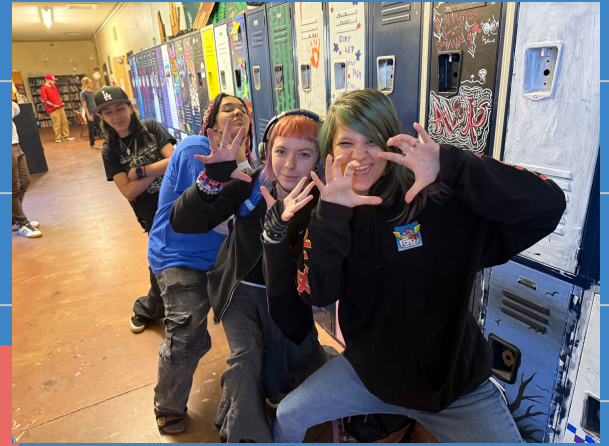
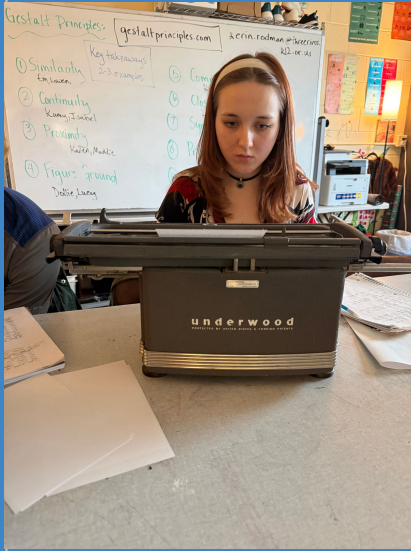
Annual Presentation

May 13

2026

Three Rivers School District
Murphy, Oregon

KCA STUDENTS



KCA STUDENTS



KCA STUDENTS



KCA STUDENTS



TEACHER LEADERS: COOPERATIVE ADMINISTRATIVE LEADERSHIP

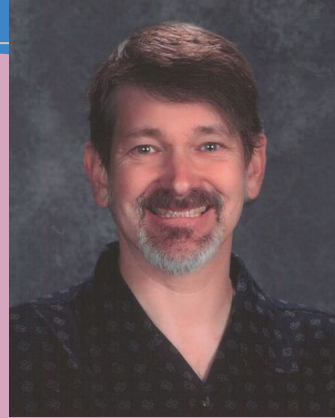
KACI ELDER



MELISSA DENARDO



RYAN FORSYTHE



SARA KINSTLER



TARYN ROBERSON



50% TEACHING

50%

ADMINISTRATION

Member, Teacher-Powered Schools

National Network

300 schools in 27 states

KCA is the first Teacher-Powered School in Oregon



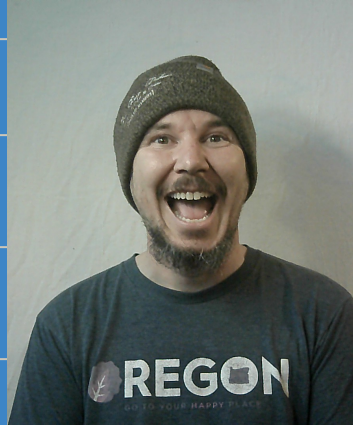
STAFF

KAYLA RAU



OFFICE MANAGER

JOE
HARLAND



CHEF

COCO FLOOD



TITLE I-A ASSISTANT

DANIEL VALLEJO



TITLE I-A ASSISTANT

COMMUNITY TEACHERS

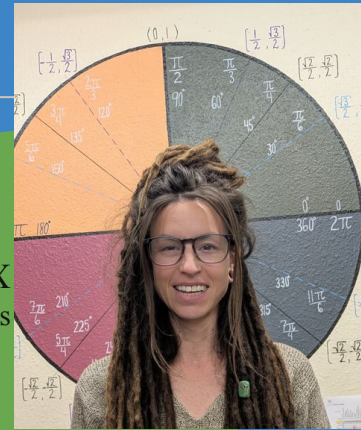


FORREST ROTH
Geobiology

CHRISTIE FAIRCHILD
Art, Plant Science



CHARITY FOX
Mathematics



SHANNON LONG
Graphic Design,
Yearbook



VERONIKA TRISHYNA
Math Tutoring

ELA BARTOLI
Group Singing



COMMUNITY TEACHERS



PADMA HAWKINS
Spanish, World Religion



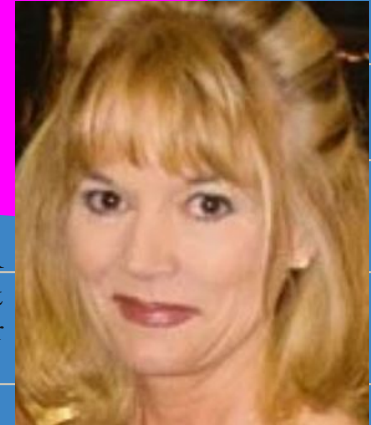
MICHAEL FRANKLIN
Poetry &
Journey Home Support Services



CLAY CARLILE
Digital Audio Production, Podcasting,
Songwriting, Guitar



MINDY KING
Literature



JANN TAYLOR
Senior Seminar &
Project Youth+ Coordinator

KCA SCHOOL BOARD

- AMANDA SELDEN-DIXON
- DRAKE PETERS, STUDENT REPRESENTATIVE
- GRACE HUGHES, CHAIR
- KELLY COSTIN, TREASURER
- LUCY BECKER, STUDENT REPRESENTATIVE
- MINDY KING, SECRETARY
- SALLY CLEMENTS
- TARYN ROBERSON, STAFF

Past Members: ANGIE GRAVES, CODY ZOOK, EMILY KELLEY,
GINA ANGELO, KAVA ROSE, LINDSEY JONES, KIMIKO
MAGLIO & WHITMAN FRANKLIN





BY THE NUMBERS

OREGON AT-A-GLANCE SCHOOL PROFILE

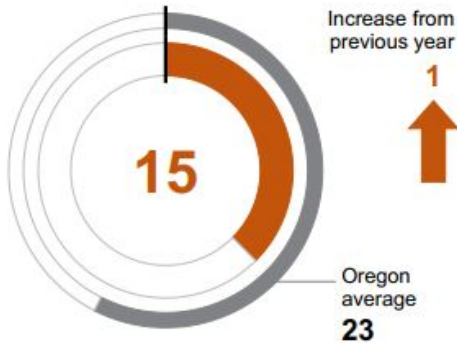
Kalmiopsis Community Arts High School



School Environment

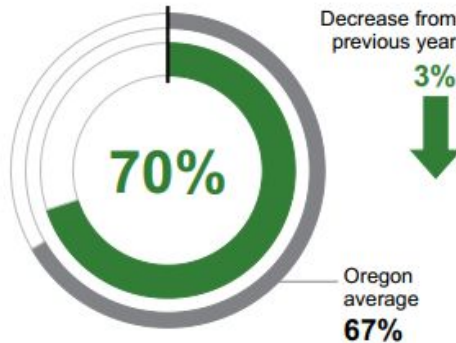
CLASS SIZE

Median size of classes in core subjects.



REGULAR ATTENDERS

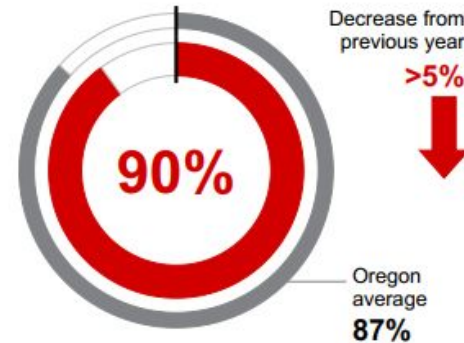
Students who attended more than 90% of their enrolled school days.



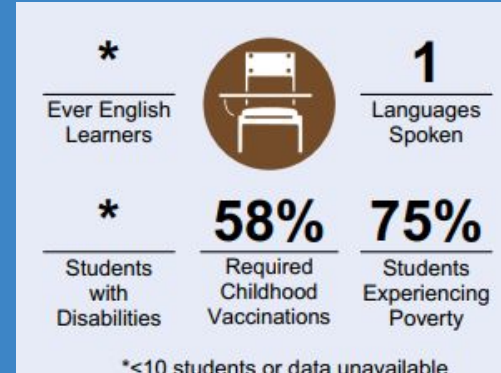
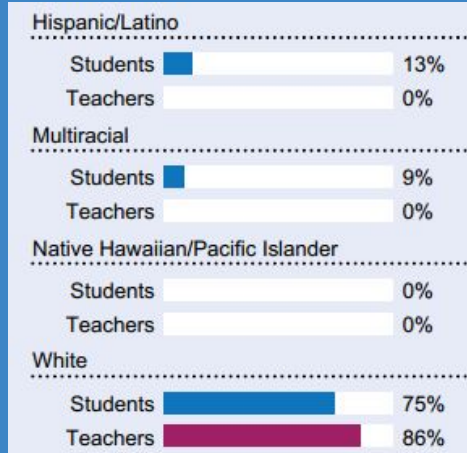
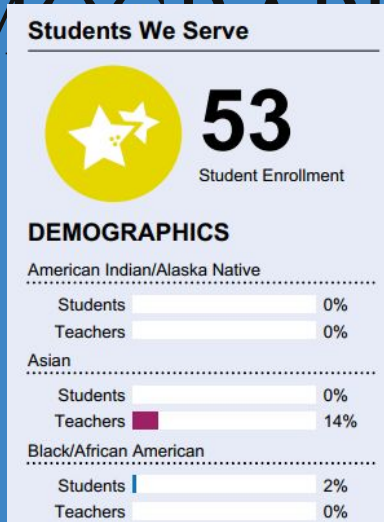
Academic Progress

ON-TRACK TO GRADUATE

Students earning one-quarter of graduation credits in their 9th grade year.



2024-2025 ENROLLMENT & DEMOGRAPHICS



2025-2026 Enrollment
(in progress)

2026-2027 Enrollment
(projected)

- Average 61 students
- 61-64 students with a wait list for 11th/12th grade



Table 37. There is at least one teacher or other adult in my school that really cares about me.

| | School 2022 | | | | School 2024 | | | | State 2024 | | | |
|------------------------------|-------------|-----|------|-------|-------------|-----|------|-------|------------|------|------|-------|
| | 6th | 8th | 11th | Total | 6th | 8th | 11th | Total | 6th | 8th | 11th | Total |
| Very much true | n/a | n/a | n/a | n/a | n/a | n/a | 80.0 | 80.0 | 40.7 | 34.3 | 36.0 | 37.2 |
| Pretty much true | n/a | n/a | n/a | n/a | n/a | n/a | 20.0 | 20.0 | 37.0 | 40.4 | 43.1 | 39.9 |
| A little true | n/a | n/a | n/a | n/a | n/a | n/a | 0.0 | 0.0 | 4.0 | 6.1 | 5.3 | 5.1 |
| Not at all true | n/a | n/a | n/a | n/a | n/a | n/a | 0.0 | 0.0 | 2.5 | 3.2 | 2.0 | 2.6 |
| Don't know/Refused to answer | n/a | n/a | n/a | n/a | n/a | n/a | 0.0 | 0.0 | 15.7 | 16.0 | 13.6 | 15.2 |

Table 38. I feel safe at my school.

| | School 2022 | | | | School 2024 | | | | State 2024 | | | |
|------------------------------|-------------|-----|------|-------|-------------|-----|------|-------|------------|------|------|-------|
| | 6th | 8th | 11th | Total | 6th | 8th | 11th | Total | 6th | 8th | 11th | Total |
| Strongly agree | n/a | n/a | n/a | n/a | n/a | n/a | 70.0 | 70.0 | 27.6 | 16.9 | 16.1 | 20.7 |
| Agree | n/a | n/a | n/a | n/a | n/a | n/a | 30.0 | 30.0 | 47.8 | 49.0 | 54.3 | 50.0 |
| Disagree | n/a | n/a | n/a | n/a | n/a | n/a | 0.0 | 0.0 | 8.4 | 13.6 | 11.7 | 11.2 |
| Strongly disagree | n/a | n/a | n/a | n/a | n/a | n/a | 0.0 | 0.0 | 3.9 | 6.0 | 4.1 | 4.7 |
| Don't know/Refused to answer | n/a | n/a | n/a | n/a | n/a | n/a | 0.0 | 0.0 | 12.3 | 14.4 | 13.8 | 13.4 |

Table 39. It is easy to talk with teachers and other adults at this school.

| | School 2022 | | | | School 2024 | | | | State 2024 | | | |
|------------------------------|-------------|-----|------|-------|-------------|-----|------|-------|------------|------|------|-------|
| | 6th | 8th | 11th | Total | 6th | 8th | 11th | Total | 6th | 8th | 11th | Total |
| Strongly agree | n/a | n/a | n/a | n/a | n/a | n/a | 60.0 | 60.0 | 27.1 | 20.1 | 20.0 | 22.7 |
| Agree | n/a | n/a | n/a | n/a | n/a | n/a | 40.0 | 40.0 | 43.7 | 44.2 | 51.3 | 45.9 |
| Disagree | n/a | n/a | n/a | n/a | n/a | n/a | 0.0 | 0.0 | 12.6 | 16.7 | 13.6 | 14.3 |
| Strongly disagree | n/a | n/a | n/a | n/a | n/a | n/a | 0.0 | 0.0 | 5.7 | 7.0 | 4.1 | 5.7 |
| Don't know/Refused to answer | n/a | n/a | n/a | n/a | n/a | n/a | 0.0 | 0.0 | 10.8 | 12.0 | 10.9 | 11.3 |

Table 40. I am happy to be at this school.

| | School 2022 | | | | School 2024 | | | | State 2024 | | | |
|------------------------------|-------------|-----|------|-------|-------------|-----|------|-------|------------|------|------|-------|
| | 6th | 8th | 11th | Total | 6th | 8th | 11th | Total | 6th | 8th | 11th | Total |
| Strongly agree | n/a | n/a | n/a | n/a | n/a | n/a | 80.0 | 80.0 | 33.7 | 17.8 | 15.3 | 23.1 |
| Agree | n/a | n/a | n/a | n/a | n/a | n/a | 20.0 | 20.0 | 40.3 | 40.0 | 43.0 | 41.0 |
| Disagree | n/a | n/a | n/a | n/a | n/a | n/a | 0.0 | 0.0 | 8.6 | 15.2 | 15.8 | 12.9 |
| Strongly disagree | n/a | n/a | n/a | n/a | n/a | n/a | 0.0 | 0.0 | 6.2 | 11.7 | 9.8 | 9.1 |
| Don't know/Refused to answer | n/a | n/a | n/a | n/a | n/a | n/a | 0.0 | 0.0 | 11.2 | 15.2 | 16.0 | 13.9 |

Table 47. I think this school welcomes and respects students...From all religions

| | School 2024 | | | | State 2024 | | | |
|------------------------------|-------------|-----|-------|-------|------------|------|------|-------|
| | 6th | 8th | 11th | Total | 6th | 8th | 11th | Total |
| Strongly agree | n/a | n/a | 100.0 | 100.0 | n/a | 39.7 | 30.1 | 35.5 |
| Agree | n/a | n/a | 0.0 | 0.0 | n/a | 42.7 | 48.9 | 45.4 |
| Disagree | n/a | n/a | 0.0 | 0.0 | n/a | 5.8 | 8.3 | 6.8 |
| Strongly disagree | n/a | n/a | 0.0 | 0.0 | n/a | 2.4 | 2.9 | 2.6 |
| Don't know/Refused to answer | n/a | n/a | 0.0 | 0.0 | n/a | 9.5 | 9.9 | 9.7 |

*New question in 2024.

Positive Youth development, SCHOOL CLIMATE, ABSENTEEISM AND BULLYING

2024 Oregon Student Health Survey

31

Table 50. I think this school welcomes and respects students...Who have disabilities

| | School 2024 | | | | State 2024 | | | |
|------------------------------|-------------|-----|-------|-------|------------|------|------|-------|
| | 6th | 8th | 11th | Total | 6th | 8th | 11th | Total |
| Strongly agree | n/a | n/a | 100.0 | 100.0 | n/a | 39.9 | 32.1 | 36.5 |
| Agree | n/a | n/a | 0.0 | 0.0 | n/a | 39.7 | 47.5 | 43.1 |
| Disagree | n/a | n/a | 0.0 | 0.0 | n/a | 7.0 | 8.2 | 7.5 |
| Strongly disagree | n/a | n/a | 0.0 | 0.0 | n/a | 3.7 | 3.2 | 3.5 |
| Don't know/Refused to answer | n/a | n/a | 0.0 | 0.0 | n/a | 9.7 | 9.0 | 9.4 |

PROJECT YOUTH+



PROJECT YOUTH+

*College & Whatever It Takes
Mid-Year Impact Report*

KALMIOPSIS COMMUNITY ARTS HIGH SCHOOL
AUGUST TO JANUARY 2025-2026

Programs

+ College+

College+ Advisors guide youth through academic success and post-secondary planning, offering support with grades, college admissions, financial aid, scholarships, and more.

+Accounts

+Accounts participants gain financial education, build money management skills, and work toward personal savings goals. Eligible youth can save up to \$2,000 and receive a match of up to \$10,000 for education, training, transportation, or emergency savings, empowering them with the tools to build assets and achieve stability.

+ Career Build

Career Build program helps youth explore career pathways, gain occupational training, and prepare for meaningful employment. Participants access career preparation, paid internships, skills training mentoring, financial support, and community connections to remove barriers and achieve success.

+ Whatever it Takes

Whatever it Takes Advisors work one-on-one with students to build personalized plans for academic and career success. Support includes academic monitoring, mentoring, home visits, scholarships, internships, leadership development, and college and career exploration opportunities.

This report reflects Project Youth+ mid-year progress toward College+ annual goals at Kalmiopsis. Outcomes will continue to evolve as students complete programming through the remainder of the academic year.

#1-Mid year participation (August-January)

- 6-8th grade 0 participants
- 9-12th grade 38 participants
- 38 total Kalmiopsis participants in College+/WIT

#2: Current Outcomes to Date

- 92% FAFSA completion (out of 13 Project Youth+ Seniors)
- 1 college tour attended by students
- 12 Underclassman Project Youth+ Competitive Scholarships submitted
- 2 students with new Individual Development Accounts (IDA).
- 6 students participating in work experience/internships
- 1 student families received weekly Project Youth+ food boxes or as needed

#3: Year to Date Financial Impact

- \$2,400 awarded to Project Youth+ Competitive Scholarship applicants
- \$20,000 IDA match allocated for Kalmiopsis students
- \$4,919 paid for student work experience/internships
- \$450 for food boxes to date (\$150 per box/per week)

#4: On Going Initiatives

- Plan 1 college campus visit for 2026
- Offer 2 financial literacy classes for new Project Youth+ IDA applicants
- Continue providing work experiences and internships for interested students
- Distribute 20 individual Project Youth+ food boxes through May to Kalmiopsis students

#1-Mid year participation (August-January)

- 6-8th grade 0 participants
- 9-12th grade 38 participants
- 38 total Kalmiopsis participants in College+/WIT

#2: Current Outcomes to Date

- 92% FAFSA completion (out of 13 Project Youth+ Seniors)
- 1 college tour attended by students
- 12 Underclassman Project Youth+ Competitive Scholarships submitted
- 2 students with new Individual Development Accounts (IDA).
- 6 students participating in work experience/internships

The \$28,997 investment by Kalmiopsis Community Arts High School leveraged approximately \$27,769 in Project Youth+ programming, with additional impact projected in 2026



EARLY COLLEGE on FRIDAYS

- 10 students in grades 9-12
- Fall, Winter, and Spring
- **34 college credits earned!!**
- Transportation provided
- **No cost to students!**

JOURNEY HOME SUPPORT SERVICES

Contracted to work with KCA, on-campus

Staff are state-certified mental health workers

Services include:

- Social and emotional mentorship
- Mental health peer support
- Mentoring, group & one-on-one, mediation

Available to students, staff, and families



CHALLENGES

Poverty and Housing Instability

75% of KCA students experience poverty
(compare to 53% districtwide)

14% of KCA students have McKinney Vento status (compare to 3.9% statewide)

Overcoming the challenge:

PY+ spent \$2,000 on barrier removal
(transport to appointments, ID recovery, college housing deposits, etc.)

75%

Students
Experiencing
Poverty



Chronic Absenteeism

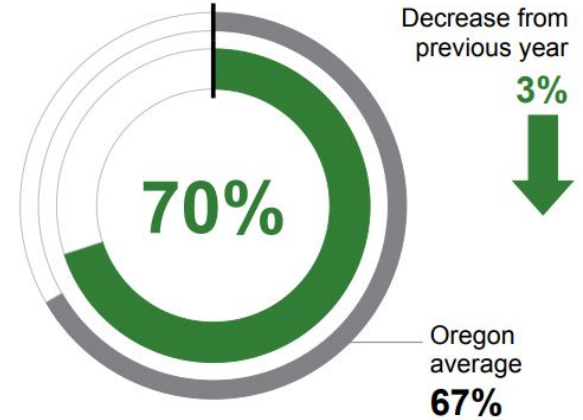
Regular attenders were down 3% in 2024-
from 73% to 70%

Overcoming the challenge:

- Attendance incentives
- Communication with families
- Tutoring and study hall for catch up

REGULAR ATTENDERS

Students who attended more than 90% of their enrolled school days.





Currently, there are only two (2) foster families in the Illinois Valley

Table 43. During the past 30 days, where did you usually sleep?

| | School 2022 | | | | School 2024 | | | | State 2024 | | | |
|--|-------------|-----|------|-------|-------------|-----|------|-------|------------|------|------|-------|
| | 6th | 8th | 11th | Total | 6th | 8th | 11th | Total | 6th | 8th | 11th | Total |
| In my parent's or guardian's home | n/a | n/a | n/a | n/a | n/a | n/a | 80.0 | 80.0 | 87.9 | 93.4 | 95.3 | 91.9 |
| In the home of a friend, family member, or other person because I had to leave my home, or my parent or guardian cannot afford housing | n/a | n/a | n/a | n/a | n/a | n/a | 10.0 | 10.0 | 1.2 | 1.2 | 1.3 | 1.2 |
| In a foster home | n/a | n/a | n/a | n/a | n/a | n/a | 10.0 | 10.0 | 0.4 | 0.3 | 0.3 | 0.3 |
| In a shelter or emergency housing | n/a | n/a | n/a | n/a | n/a | n/a | 0.0 | 0.0 | 0.2 | 0.1 | 0.1 | 0.1 |
| In a motel or hotel | n/a | n/a | n/a | n/a | n/a | n/a | 0.0 | 0.0 | 0.2 | 0.1 | 0.1 | 0.1 |
| In a car, park, campground, or other public place | n/a | n/a | n/a | n/a | n/a | n/a | 0.0 | 0.0 | 0.1 | 0.1 | 0.1 | 0.1 |
| I do not have a usual place to sleep | n/a | n/a | n/a | n/a | n/a | n/a | 0.0 | 0.0 | 0.5 | 0.3 | 0.2 | 0.3 |
| Somewhere else fits better | n/a | n/a | n/a | n/a | n/a | n/a | 0.0 | 0.0 | 5.3 | 2.3 | 1.0 | 3.1 |
| Don't know/Refused to answer | n/a | n/a | n/a | n/a | n/a | n/a | 0.0 | 0.0 | 4.3 | 2.3 | 1.6 | 2.8 |

Table 44. Have you ever been placed in foster care or stayed in a group home?

| | School 2022 | | | | School 2024 | | | | State 2024 | | | |
|------------------------------|-------------|-----|------|-------|-------------|-----|------|-------|------------|------|------|-------|
| | 6th | 8th | 11th | Total | 6th | 8th | 11th | Total | 6th | 8th | 11th | Total |
| Yes | n/a | n/a | n/a | n/a | n/a | n/a | 30.0 | 30.0 | 3.6 | 3.9 | 4.2 | 3.9 |
| No | n/a | n/a | n/a | n/a | n/a | n/a | 70.0 | 70.0 | 84.4 | 89.6 | 91.8 | 88.3 |
| Don't know/Refused to answer | n/a | n/a | n/a | n/a | n/a | n/a | 0.0 | 0.0 | 12.1 | 6.6 | 4.0 | 7.9 |



2023-2024
HIGHLIGHTS
YEAR

1

HIGHLIG
HT 1
OPENED
OUR
DOORS!

HIGHLIGH
T 2
STABLE
STUDENT
POPULATIO
N

HIGHLIG
HT 3
FINANCI
AL
STABILIT
Y

HIGHLIG
HT 4
VOTED
“ORGANIZA
TION OF
THE YEAR”
BY THE
ILLINOIS
VALLEY

2024-2025
HIGHLIGHTS
YEAR

2

HIGHLIGHT 1

MOVED
DOWNTOWN

HIGHLIGHT 3

CONTINUED
FINANCIAL
STABILITY

HIGHLIGHT 2

PARENT
TESTIMONIALS

HIGHLIGHT 4

COLLEGE
&
CAREER
PROGRAMS

2025-2026
HIGHLIGHTS
YEAR
3

HIGHLIGHT 1

STUDENT
TESTIMONIALS

HIGHLIGHT 2
FABULOUS
HOMEMADE

HIGHLIGHT 3

CONTINUED
FINANCIAL
STABILITY

HIGHLIGHT 4

HELPED
SAVE THE
TOWN
NEWSPAPER



FRESH, HEALTHY,
HOMEMADE



Illinois Valley News

The oldest business in the Illinois Valley. Independently published since 1937.

[About Us](#)[E-Edition](#)[News](#) ▾[Sports](#)[Classifieds](#) ▾[Events](#)[My Account](#)[Contact Us](#) ▾

NEWS

Introducing Kalmiopsis Publishing: IV News has new owners and nonprofit educational focus

by [admin](#) — on January 14, 2026



admin

Author

Just like the fog blanketing the valley, we have been lying low during the cold and the holidays. But, now it's time for the fog to break and for the sun to shine through. We've got big news.

As of today, the Illinois Valley News is owned and published by Kalmiopsis Publishing, a new organization in the process of becoming a 501(c)(3) nonprofit. KP is a project of Kalmiopsis Community Arts High School (KCA), our local nonprofit public charter school here in Cave Junction.

Search

[Search](#)

Events

See what's happening in the Valley and submit your event

Classifieds

Buy, sell, find work or workers, or place your own ad

Service Directory

See services available from local businesses

STUDENT REPRESENTATIVE REPORT

Lucy Becker

12TH

GRADE

Drake Peters

11TH

GRADE



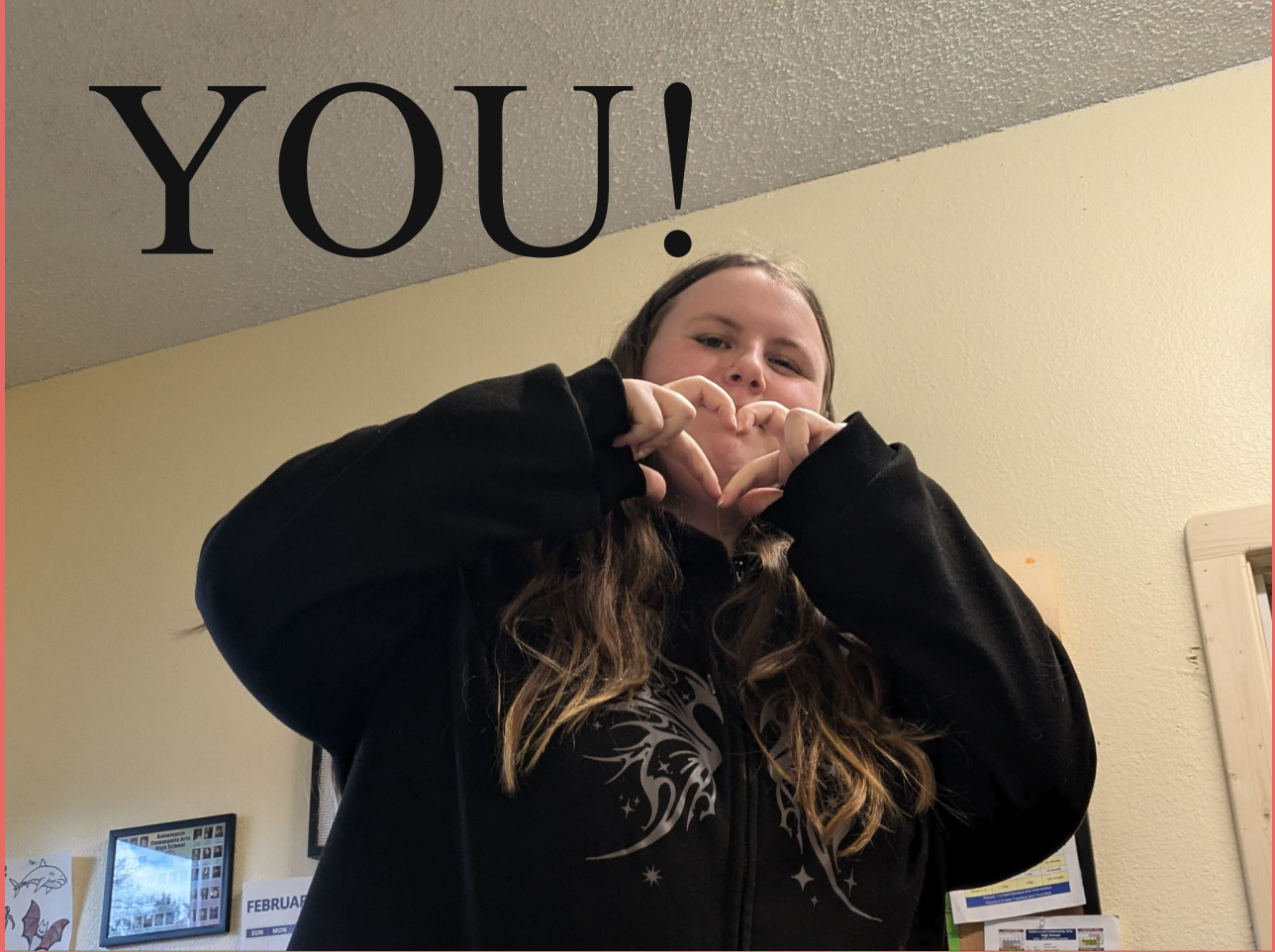
GOALS 2026-2027

1. INCREASE REGULAR ATTENDERS FROM 70% (24-25) TO 80% (25-26)
2. ADD TWO ONSITE AP CLASSES: PRECALCULUS & COMPARATIVE GOVERNMENT AND POLITICS
3. $\geq 95\%$ OF 9TH-GRADE STUDENTS ON TRACK TO GRADUATE (INCREASE FROM 90% IN 24-25)

GOALS 2026-2027

4. IF FUNDED, USE FOUR WAY COMMUNITY FOUNDATION GRANT FOR KITCHEN RENOVATION TO IMPROVE OUR BREAKFAST AND LUNCH PROGRAM
5. USE DATA FROM SCHOOLWIDE PROGRESS MONITORING TO IDENTIFY UNMET NEEDS AND IMPROVE LEARNING OUTCOMES IN READING AND MATH
6. DIVERSIFY RESOURCES AVAILABLE TO STUDENTS FOR SOCIAL-EMOTIONAL SUPPORT THROUGH OUR CONTRACT WITH JOURNEY HOME

THANK
YOU!



KCAHS.ORG