

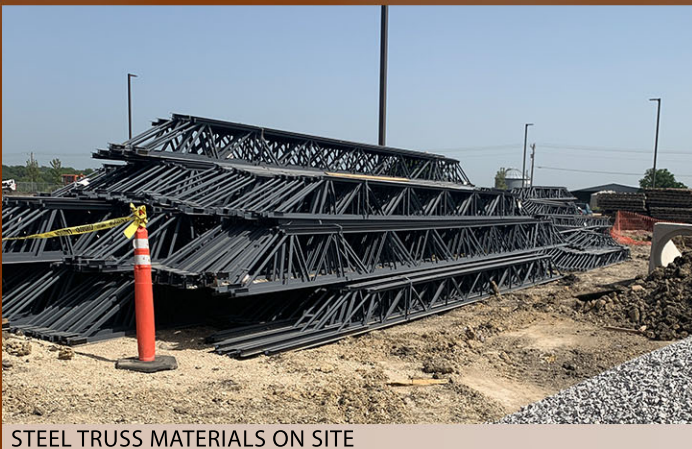
PROJECT UPDATE

JUNE 2022

CELINA ELEMENTARY SCHOOL



STORM SHELTER REINFORCING



STEEL TRUSS MATERIALS ON SITE



UNDER SLAB PIPING

CONSTRUCTION STATUS

SITE WORK

- SITE UTILITIES - ON-GOING
- EARTHWORK - ON-GOING

LOOKING FORWARD

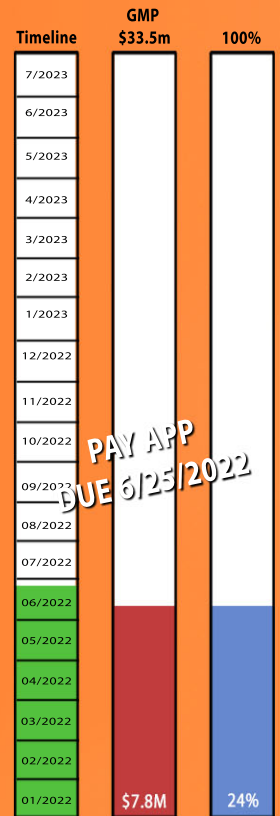
- PAVING
- FIRE LANE ACCESS

BUILDING

- SHOP DRAWING SUBMITTALS - ON-GOING
- UNDERSLAB UTILITIES - ON-GOING

LOOKING FORWARD

- GOING VERTICAL
- UNDERGROUND MEP
- STEEL



Designing Schools . . . With Kids in Mind!

www.claycomb.net

PROJECT UPDATE

