

## Bradley Elementary School

155 David Humphreys Road • Derby, CT 06418-2250

Mr. Mario Ciccarini, Principal

Phone: (203) 736-5040 • [www.derbyps.org/Bradley](http://www.derbyps.org/Bradley)

Email: [MCiccarini@derbyps.org](mailto:MCiccarini@derbyps.org)

January 13, 2015

**To:** Dr. Matthew Conway, Superintendent of Derby Schools

**From:** Mario Ciccarini, Principal of Bradley School

**Re:** Proposed Grade 5 Field Trip to Nature's Classroom (Lakeside Location)

Dear Dr. Conway,

Based on previous experience with Nature's Classroom, I am proposing bringing our fifth grade class to their Lakeside, CT location.

**Rationale:** Nature's Classroom provides students with a unique opportunity to be part of a living and learning community with their peers. They use an inquiry-based approach to emphasize critical thinking and problem solving skills while strengthening the sense of community amongst the students. Students will leave Nature's Classroom with an understanding of real-world application to their academics and a greater sense of belonging with their peers, which will only help with the transition to middle school next year.

**Where:** Nature's Classroom, 190 Kenyon Rd., Lakeside, CT. (38.3 miles from Bradley School via Rt. 8N with a 50 minute estimated travel time)

**When:** Wednesday May 20, 2015 to Friday May 22, 2015. Pick-up at Bradley School would be on 5/20/15 at 9AM with an anticipated 10AM drop-off at Lakeside. Pick-up at Lakeside would be on 5/22/15 at 1PM with anticipated return to Bradley at 2PM. Parents would be required to pick-up their students from the school.

**Who would be attending:** The trip would accommodate all 55 current fifth grade students and 4 teacher chaperones. The fifth grade teachers would have the first opportunity to attend and then the trip would be opened up to other certified staff. 4 substitutes would need to be booked through Kelly services for non-grade 5 staff.

**Cost of Trip:**

Nature's Classroom = \$284 per student (already quoted) x 55 = \$15,620

All-Star Buses for both days = \$300 per bus x 2 = \$600 (already quoted)

Total Cost: \$16,220 / 55 students = \$295 per student\*

\*The PTA has said they will allot all fifth grade funds for field trips (\$1,200+) towards helping defer the cost of the trip per student. Bradley School will also help offset the cost of the trip for any families facing financial hardship and would like their child to participate.

Students of parents who do not wish for their child to participate will be placed in a 4<sup>th</sup> grade classroom and be provided with the assignments left by their classroom teachers.

Pending your approval, I will submit all the required district paperwork for Board approval.

Sincerely,



Mario Ciccarini

*At Bradley School we leave our P.A.W.S. on everything we do. We Persevere, Act Responsibly, Work and Play Safely, and Show Respect. These are the characteristics that define who we are and will help us become positive role models in our school and community.*

# Nature's Classroom *at Lakeside, CT*



*Camp Washington/All Saints Conference Center is located in historic Litchfield County in the foothills of the Berkshire Mountains. The 300 acres include hardwood forests, meadowlands, a pond, streams and historic countryside.*

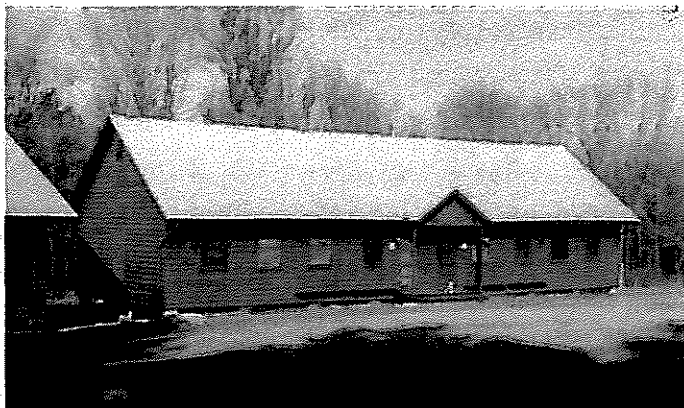
## **DIRECTIONS:**

Take I-84 to Waterbury, CT. In Waterbury take Route 8 North towards Torrington. Take Exit 38 (Reynolds Bridge, Route 6, Route 109). Bear left at end of ramp, go under underpass. Take left at lights and continue to stop sign. **Go diagonally across intersection onto Route 109 (Black Rock School on your left).** Continue on Route 109 to East Morris (intersection of Route 63). Go straight on Route 109. At stop sign in Morris (intersection of Route 61) continue straight on Route 109. Go approximately 3 miles (pass cemetery and lake), go up a hill. At the top of the hill turn left onto Kenyon Road. This turn can be difficult to spot, look for the Episcopal Camp sign. Camp entrance is about .5 mile on the left. Please park in the lot immediately on your left when you drive in.

If coming on Route 8 South: Take Exit 38. Take a left at the light. At next light, turn right and continue to stop sign. **Follow directions in bold above.**



Kenyon Hall



Four Cabins: Each housing 32 students; each side of a cabin housing 16 students with private area for the teacher.

# CLASS CURRICULUM TABLE OF CONTENTS

## ECOLOGY:

Aquarium Construction  
Biome Building  
Bog Jog Sneaker Squeaker (Bog Ecology)  
Charles River (Water Pollution)  
Coming Attractions! (Habitat Improvement)  
Desert Heat (Desert ecosystem)  
Dirty Looks (Soil)  
Dominoes (Environmental Impact Study)  
Elves and Trolls (Succession)  
Endangered Egg Babies (Endangered Species)  
Garbage Crisis & Recycling  
Gardening & Compost  
Gnome Ecology  
Hidden Cities (Micro ecosystems)  
Ice is Nice (Snow and Ice Investigation)  
Ice Wars  
Jelly Belliology (Taxonomy)  
Key Me (Taxonomy)  
Never Eat Slimy Worms  
Population Dynamics  
Recycled Ort (Decomposition)  
Tank Aquaculture  
Terrarium Construction  
Watery Wonders (Aquatic ecosystems)  
Web of Life  
Worm City (Decomposition)

## BOTANY:

Aw, Shoots! (Making Beansprouts)  
Cuckoo for Coconuts  
Flatten Flora (Plant Preservation)  
Gardening, What a Wonderful Life  
Ginger  
Great Gobs of Garlic  
Guerrilla Gardening  
Humongous Fungus  
Hydroponics (Growing Plants Without Soil)  
Leaf Me Alone  
Mr. Potato Head  
NC Bacteria  
Plant Babies  
Plant Response Meter  
Plants Have Homes Too! (Plant Ecology)  
Poisonous Plants & Potions  
Potato Porcupines  
Ring Around the Tree (Wood Uses and Tree Study)  
Sawmill Visit (Trees, lumber)  
Seed Racers  
Seed Travelers  
Slide Show Botany  
Straining Forest  
Take A Bite Out of Nature

Take Two Dandelions and Call Me in the Morning  
Tea Time (Wild edibles)  
Tie-Dyed Flowers  
Tree Tag  
Tooty Fruity (Fruit Dissection)  
Watch Out For Falling Leaves  
A Weed by Any Other Name  
What's Transpiring?  
Where Have All the Flowers Gone? (Winter Weeds)  
Yeastie Beasties

## ZOOLOGY:

Advanced Camouflage  
A-Maze-ing (Animal behavior)  
Animal Behavior  
Animal Camouflage  
Animal Communication  
Animotion (How animals move)  
Ant Farm  
Aquatic Insects  
Arachnids  
Bats Incredible  
Bean Trek Forager  
Beaver Fever  
Bluebird Bungalows  
Bug Out!  
Butterfly Effect  
Camouflage and Stalking  
Crunchy Crickets  
Deer Survival  
Dissection  
Drugged  
Earthworms  
Eggs  
Feed the Birds  
Fish Prints  
For the Birds  
Fox Prints  
Gastropod Gastronomy  
Goin' On a Bug Hunt  
Gotcha! (Animal Live Trapping)  
The Great American Bean Hunt (Bird Adaptations)  
Home Tweet Home  
Icarus  
Ice Fishing  
Insect Torture (Insect Behavior)  
Invasion of the Worms  
Invent-a-Beast (Adaptations)  
It's a Small World  
Kitchen Paleontology (Addendum to Taxidermy)  
Live Animal Tracking  
Metamorphosis  
Mexican Jumping Beans  
Mosquitoes Suck!

Mosquito Patrol  
 Never Cry Wolf  
 The Older the Better (Fossils)  
 Pipe-A-Saurus Park (Dinosaurs)  
 Polar Bear Necessities  
 Roach Motel (A cockroach dissection)  
 Salamander Gander  
 Scat!  
 Scorpions Are Your Friends  
 Spiderman  
 Spineless Majority  
 Stalking  
 Tail of Two Rabbits  
 Taxidermy  
 Walk on Water  
 Where There's a Quill There's a Way  
 Who Puked? (An owl pellet study)  
 Wood Ducks, Wooden Boxes  
 Wooly Wooly  
ZZZZZZZZZZ (A Study in Hibernation)

### MARINE BIOLOGY:

Amok in the Muck  
 Crabbing  
 Gyotaku (Fish biology)  
 Highs and Lows (An Exploration of Tides)  
 How To Be a Super Star(fish)  
 I'm Being Followed By a Moon Jelly  
 Learning About Limulus (Horseshoe Crabs)  
 Let's Glow (Bioluminescence)  
 Marsh Madness  
 Sam the Clam (Over fishing)  
 Weeds of the Sea  
 Wonderful Wandering Whatsits (Plankton)

### ANATOMY AND HUMAN HEALTH:

Bones  
 Breathe Deeply (Respiratory System)  
 Crunchy Munchies (Granola Making)  
 Designer Genes  
 Eat, Drink, Sleep  
 Eater's Digest (Healthy nutrition)  
 Explore Your Senses  
 Feed Your Face, Too (Skin)  
 The Four True Colors (Human brain)  
 Freaks of Nature (Genetics)  
 Go with the Flow (A Study of Blood)  
 Grossology (Immune System)  
 Heart of the Matter  
 Human Brain Dissection (Caffeine and the brain)  
 Inside-Out Kid (Human anatomy)  
 Is There a Doctor in the Woods (First aid)  
 Let's Face it (Skull and face)  
 Let's Get Physical (Muscles and Exercise)  
 Let's Go to the Movies (Optical illusions)  
 Lies (Optical Illusions)  
 Marshmallow Breeding (Genetics)  
 Mutant Moths (Genetics)  
 No Bones About It  
 Now Hear This (Auditory)  
 Sheep Heart and Lung Dissection  
 Snot Making (Immune system)

Soccer Ball Digestion (Digestive system)  
 Vampire Survival (Circulatory system)  
 World Builder  
 Zombie Apocalypse: Spread of Infectious Diseases

### CHEMISTRY:

Alchemy  
 Atom Builders  
 Atomic Ice (Ice Cream)  
 Awesome Acids  
 Burnt Nuts  
 Catazymes  
 Chalk It Up (Calcium)  
 Chemical Attraction  
 Chemical Reactions  
 Chemistry Magic  
 Code of Life (Genetics)  
 Come Clean (Soap making)  
 Concreate  
 Crystals  
 Dirty Water  
 Disgusting (Diaper Dissection)  
 Distillation  
 DNA Extraction  
 Double Bubble Trouble  
 Fire and Explosions  
 For Crying Out Cloud (Acid Rain)  
 Gasping for Air! (Air Pollution)  
 Get A Half Life  
 Glow Power  
 H2Whoa!  
 Ickle Me Pickle Me (Preserving)  
 Icky Sticky (Polymers)  
 I Love Lemons  
 It's Not Easy Being Cheesy  
 Kitchen Chemistry  
 Making Slime and Other Cool Stuff (Polymers)  
 Mentos Eruptions  
 Nice To "Meat" You  
 Oo Oo That Smell  
 Oozes, Slimes and Muds  
 Please Pass the Salt  
 Rocket Fuel Chemistry  
 Root Beer  
 Shampoo Sham  
 Soda Popinski  
 Sugar Coated Chemistry  
 Udderly Cool Plastic Cows  
 Vinegar Magic  
 Weird Food  
 What's Happening? (Environmental Chemistry)  
 You Are What You Eat (Food Testing)

### PHYSICS/GENERAL:

All Geared Up  
 Alternative Energy  
 Are You Dense?  
 Bad Spin (Coreolis effect)  
 Batmobiles  
 Bernoulli & the Magical Puffer  
 Blast Off! (Model Rockets)  
 Blown Up with Air  
 Bombs Away (A Study of Projectiles)

Boomerangs  
 Bounce  
 Bounce With Me  
 Bridge Over Troubled Waters  
 Bridge That!  
 Build It Your Way (Arch Bridges)  
 Burma Bridge  
 Candlelight Science  
 CD Hovercrafts  
 Chef Sun Beam  
 Corny Little Explosions  
 Digital Junk Dissection  
 Don't Push Hunter to the Boiling Point  
 Egg Dissection  
 Eggmobiles  
 Electric Motor  
 Electrifying  
 Electronic Dissection  
 Electronics  
 Electroplating  
 Field of Dreams  
 Float Your Boat  
 Giant Pinhole Camera  
 Go Fly a Kite  
 Hack It Up! (Hackey sack physics)  
 Handle with Care (Egg Drop)  
 Handle with Care Part 2  
 Hang Gliders  
 Hang in There (Suspension Bridge Construction)  
 Harnessing the Sun  
 Have a Ball!  
 Heatwaves (Thermodynamics)  
 Helicopters  
 Hot Air Balloons  
 How to Cross a Desert (wind power)  
 Juggle!  
 Just Plane Fun! (Flight and Aerodynamics)  
 L.A.S.E.R.  
 Lasers  
 Lightning in a Bottle  
 Light the Afterburner  
 Liquid Love & Attraction  
 Look At 'Em Go  
 Magnetic Field Detectors  
 Magnetism  
 Magnum P.I. (The Science of Kidnapping)  
 Making Electricity  
 Making Sense out of Physics  
 Marbleized Paper: A Scientific Art  
 Martha Stewart's Chemical Rockets  
 Mile-a-Minute Murphy  
 Mousetrap- AKA Incredible Machine  
 Mousetrap Catapults  
 Nuclear Power - Use It or Lose It?  
 Oh, Chute!!! (A Class about Parachutes)  
 Pendulum Principles  
 Piezo Power & the Nail Polish Remover Engine  
 Propellers and Puddlejumpers  
 Pulleys  
 Radios  
 The Rainbow Connection  
 Rube Goldberg Machines

Scope it Out (Mini Microscopes)  
 Small Engine Construction  
 Soda Can Steamboats  
 Somewhere Over the Rainbow  
 Sounds Good to Me  
 Speed Boats (Stream Horse Power Study)  
 That's Shocking  
 This Class Will Blow You Away (Wind Power)  
 The Tower of Power  
 Trebuchets and Catapults  
 Ultimate  
 Up Periscope  
 Ups and Downs (rollercoasters)  
 Water Rockets  
 Wave Bye-Bye  
 Weight, Density, and Volume  
 Weird Noizez  
 What Floats On What (Density)  
 Wind Energy  
 Wind Power  
 You Light Up My Life

## EARTH AND SPACE SCIENCE

Asteroid  
 Astroman  
 Avalanche  
 Ben Franklin's Bells  
 Build a Portable Planetarium  
 Cloud Appreciation  
 Earthquake!  
 Earthquakes  
 Edible Volcanoes  
 Fantastic Fossils  
 Fossils  
 Glaciation  
 Glaciers, the Great Importers of Rocks  
 Going With the Flow  
 Holy Cave Its Dark in Here  
 H<sub>2</sub>U<sub>h</sub>O<sub>h</sub>  
 Ice Cubes and Glaciers  
 It All Flows Downhill  
 Life Under Ice  
 My Planet is Bigger Than Yours  
 Nature's Shapes (Snowflake Science)  
 Oh Well!  
 Pangea Mapping  
 A Really, Really Bad Day (Meteorites)  
 Rock N' Roll  
 Sand Castles  
 Sands of Time  
 Sculpting the Earth  
 Skylab (Solar System)  
 Snow Down You're Moving Too Fast  
 Snowflakes and Ice Crystals  
 Soil is More Than Dirt  
 Solar Energy  
 Star Light, Star Bright (Star Magnitudes)  
 Stream -- Dam it (Dam Building)  
 Sundials  
 That's Astronomical (I): The Moon  
 This Rocks!  
 Thunderstorms

Time Travel (Geology)  
The Twilight Zone  
Up On the Watershed  
Volcanoes  
Voyager  
Water Bars (Erosion Prevention)  
Water Game  
Weather or Not (Weather Station Construction)  
What's in Your Water?  
What's Out There  
XStream

## **MATH**

Ancient Numbers  
Aztec Warrior (Aztec number system)  
Basic Orienteering  
Clinometers  
Compass and Design  
Contour Carnival  
Contour Map Simulation  
Countryside Measuring  
Fractals Everywhere: A Beginner's Guide to Chaos  
Geodomes (Geodesic Dome Building)  
Get Lost (Map and Compass)  
Goodness Gracious, Great Balls of Clay!  
Heads or Tails  
How Fast Do You Run  
Keepers of the Knots  
Map-Making  
Marble Machine (probability)  
Mathemagics  
Mayan Glyph Mania  
Mega-Structures  
Mini-Structures (Geometric Construction)  
Mini-Structures: A New Dimension  
Miscalculations  
**Nature's Numbers**  
Polling  
Polyhedrons  
Projectile Motion  
Reckon the Rack  
Santosotep's Tomb  
Scorpion King Math (ancient Egyptian Math)  
String Art  
Surveying a Trail  
Tasty Treasures Compass Course  
Time  
The Timex Millennium Sundial 5000  
Towers  
Where To? (Orienteering)

## **HUMANITIES:**

Advanced Encounters  
Ancient Graffiti  
Ancient Writing  
Another Land, Another Place (Meditation)  
Batik  
Beast  
Biff Bam Pow (History of comic books)  
Book Binding  
Book Making: or Los Loco Libros  
Calligraphy

Close Encounters  
Creative Weaving  
Cryptography: The Science of Secret Writing  
Secret Codes  
Dada (language)  
Different Strokes For Different Folks  
Double Vision  
Drawing  
Duck Tapeology  
Dynamic Movement  
Feed Your Face  
Forest Fantasia  
Gum of Your Business  
Haiku Deathmatch  
Hear Ye, Hear Ye (Newspaper)  
Huckin' Stuff  
It's My Write! (Creative Writing)  
Landscape Modeling  
Let's Play  
Lights Camera Action  
Making Sense  
Mime  
Mime of Nature  
Muppet Show (Puppetry)  
Musical Art  
Mything In Action  
Name That Tune (Music Composition)  
Natural Creations  
Natural Mobiles  
On the Air (Radio Broadcast Writing)  
Out of This World  
Paper Making  
Paper Marbling Techniques  
Picture This  
Prove It  
Puzzles and Paradox  
**Recycled Art**  
Reflections of Nature  
Stained Glass  
Steal Your Face  
Tied Up (The Art of Macrame)  
Up in the Air, Junior Troubadors (Ballads)  
What? (communication)  
Witness Tree (poetry)  
Woodland Music  
Woods Words  
Yes And!

## **SOCIAL STUDIES:**

Aboriginal Australia  
Air Game  
Alpha Beta  
The Appalachian Trail  
Barbrietta Stones (Archeology)  
Bentwood Boxes  
Bigfoot (Snowshoe Construction)  
Buddy Bargaining  
Build a Civilization  
Can You Dig It?  
Chase the Burglar (geography)  
A Class on Cloth  
Congress: It's the Law

The Day of the Dead  
 Decisions (Values Clarification)  
 Determined Dowser  
 Don't Dis Professor X  
 Dream Catchers  
 Eat the U.S.A.  
 Egg Babies  
 Exploring  
 Future Shock  
 Garbage Dissection  
 Gone Fishin'  
 Halloween History  
 I'm OK, You're OK (Exploration of Handicaps)  
 It's the Law  
 I Want My Mummy  
 Leave No Trace  
 Live By the Sword  
 Lothlorien (Community Development)  
 New Society (Values)  
 Oil Game (Sharing Resources)  
 The Oregon Trail  
 Plastic SMASHtics!  
 Run For Your Lives! (Volcanoes)  
 Save the World  
 Shipwreck!  
 Simulation City  
 Staying Alive  
 Stones and Bones  
 Survivor  
 Swim For Your Lives (Hurricanes)  
 Timber?  
 Tool Safety  
 Trailblazing  
 Trekking Together (Nature Trail Design)  
 Trial of the Lorax  
 Vikings  
 Water Resource Game  
 We the People  
 We're Revolting  
 Where There's Smoke, There's Fire  
 X Never Marks the Spot (archeology)  
 Yo Ho Ho on a Pirate Ship

### EARLY AMERICA:

Appleheads  
 Baa Baa Black Sheep (Wool Processing)  
 Beads and Quills (Native American Embroidery)  
 Cellar Holes  
 Colonial Candles  
 Colonial Cooking With a Slice of Home  
 Colonial Feast (Thanksgiving)  
 Colonial Sled Building  
 Colonial Soap Making  
 Early American Toys  
 Fencing (Wood Fence Construction)  
 Fireplace Construction  
 Igloo Making  
 Inipi Construction (Native American Sweat Lodge)  
 Kachina Puppets  
 Lacrosse  
 Let 'er Roll (Colonial Farming)  
 Little House in the Big Woods (Log Cabin)

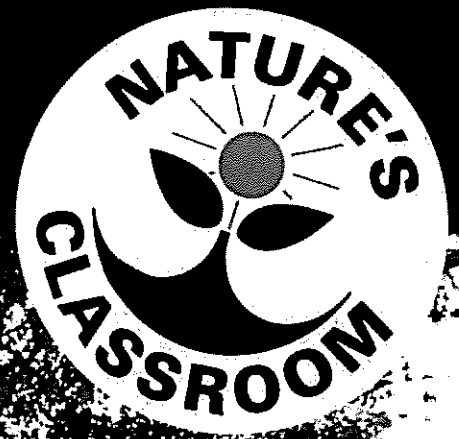
Native American Bone Game  
 Native American Cooking  
 Native American Games  
 Native American Symbols  
 Natural Dyeing  
 The Old Mill Stream  
 One in Harmony (Native American Trapping)  
 Out on a Loom (Looming)  
 Plumping Mill (Early American Water Power)  
 Rags to Riches (Sock Dolls)  
 Root Cellars  
 Sap Sucking (Black Birch and Maple Syrup)  
 Spinning  
 Sticks and Stones (Primitive Tools)  
 Stone Wall Construction  
 Sugar on Snow  
 Sweep 'em Off Their Feet (Colonial Broom Making)  
 Tanning  
 Using the Inipi  
 Well Building  
 Wood Furniture  
 Woodland Ceramics (Native American Pottery)  
 Woodlot Development (Permanent Shelter Building)  
 Write On (Natural Inks)

### LARGE GROUP ACTIVITIES

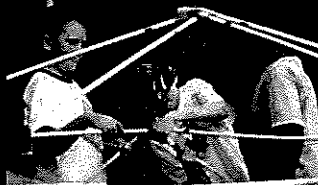
Albatross  
 Back To Basics  
 Concord  
 Entertainment Tonight  
 Mad Scientist: A Science Fair Activity  
 More Science Fair Activities  
 Still More Science Fair Activities  
 Native American Night  
 On the Streets: A Homelessness Simulation  
 On The Streets (2)  
 Planetarium Show: Winter Script  
     Spring Script  
     Luna Script  
 Predator-Prey  
 Savage Ravage  
 Trail of Tears Simulation  
 Underground Railroad Background  
 UGRR new version  
 The UGRR Wrap  
 Wild, Wild West  
 World of Nations



Think outside the books...



ENVIRONMENTAL EDUCATION PROGRAMMING DEDICATED TO  
MOTIVATIONAL LEARNING AND COMMUNITY AWARENESS



WWW.NATURESCCLASSROOM.ORG 1.800.433.8375



# Think outside the books..

## Nature's Classroom provides:

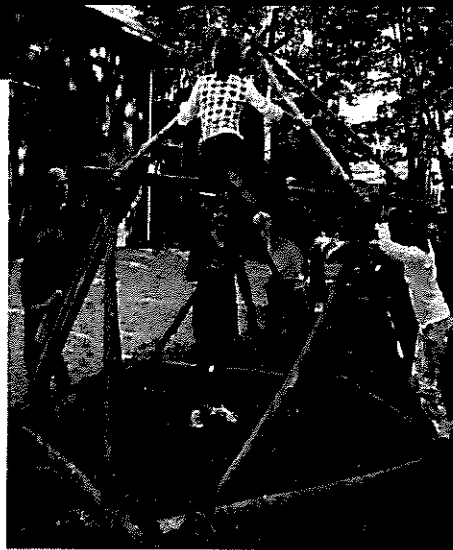
- An award-winning program recognized in New England and New York as a valuable extension of the classroom;
- Presentations (with no commitment expected by local schools) for parent, teacher, and school board meetings to explain the program;
- The ability to visit any of our facilities prior to making a reservation;
- A program that allows the classroom teacher to choose how involved he or she becomes;
- Executive Director: a certified school administrator and experienced classroom teacher;
- Program Coordinators: qualified on-site personnel, each experienced in providing effective programming tailored to your needs;
- Teachers: experienced with various master's and baccalaureate degrees, in a wide variety of academic subjects, teaching on a ratio of 1 to 14 or fewer;
- Land: lots of it with a variety of habitats for exploration;
- A setting that emphasizes scientific inquiry and critical thinking through project-oriented classes that help students become motivated to learn;
- Follow-up, teaching units, and resource ideas in a two volume set of 245 lesson plans entitled *And This Our Life*;
- Curriculum: tailored to meet individual school needs as well as state and federal standards;
- Lodging: comfortable, winterized facilities, accommodating up to 300 people;
- Food: an unlimited supply designed to delight children, and an ability to accommodate special dietary needs;
- Medical Care: a nurse, EMT, or medical person on duty or on call at all times;
- Insurance: students accident and illness plus a \$5 million liability.

**N**ature's Classroom offers a unique educational experience for students and their teachers. At Nature's Classroom, we create a living and learning community. We use an inquiry-based methodology to emphasize critical thinking and problem solving skills. Our professional staff work with students to develop their ability to work as a team. Students understand real-world applications to academic disciplines, motivating them to expand their love of learning.

### Field Group



### Special Interest Classes



### Evening Activities



**E**ach morning our educators lead 12 students into the woods where nature becomes the teacher. Students discover connections existing within both natural and humanmade systems. Experiences may focus on changes through time, examining predator/prey relationships, learning about local flora and fauna. During field group studies our educators also facilitate team-building and leadership challenges. Students practice skills to become effective community participants. The open field group curriculum encourages students to become active participants in their learning process. No matter where our experienced educators lead students, field group fosters curiosity and exploration, providing students with a basic framework for developing a systems-based perspective.

**I**n the afternoon students choose from a variety of Special Interest Classes. Before visiting Nature's Classroom, schools have the opportunity to select their classes from over 500 activities spanning all academic areas. Classroom teachers working with Nature's Classroom program coordinators tailor their school's program to meet their unique needs. From the chemistry of ice cream, to the biology of an animal dissection, to writing a newspaper, to learning government by creating laws, each hour or one and a half hour class engages students with hands-on and experiential projects and activities. Classes provide a touchstone experience to motivate students throughout the school year.

**T**he day does not end when the sun sets! After dinner, schools choose from a variety of academic and social activities to meet the needs of their students. Academic activities may include a Science Exposition, a Night Walk taken by each Field Group, an Environmental Hearing, the Underground Railroad simulation or Back 2 Basics, a Native American traditions and technology activity. Social programming may include a Skit Night, a team-building challenge night, a Dance or a Campfire. Working with the Nature's Classroom staff, classroom teachers can select those activities which best suit the goals they have for their students.

# Sample Schedule:

**N**ature's Classroom offers residential programs and day programs. Most of our schools enjoy a full five day and four night residential program, while some schools come for one, two, three or four days. Here is a sample schedule for a generic five day program. We tailor our program to meet the needs of each school.

## Monday

11:00 Arrival & Settling In  
 12:00 Lunch  
 Orientation  
 Field Experience  
 4:00 Special Interests  
 6:00 Dinner  
 7:30 Quest Team Building  
 9:00 Snack  
 Quiet Sing  
 9:30 Dismiss To Cabins

## Tuesday

7:15 Good Morning!  
 8:00 Breakfast and Clean Up  
 9:30 Field Experience  
 12:00 Lunch  
 Free Time  
 2:00 Special Interest Classes  
 4:00 Special Interest Classes  
 6:00 Dinner  
 7:30 Night Experience  
 9:00 Snack  
 Quiet Sing  
 9:30 Dismiss To Cabins

## Wednesday

7:15 Wake Up!  
 8:00 Breakfast and Clean Up

9:30 All Day Ocean/ Mountain  
 Field Experience  
 6:00 Dinner  
 7:30 Back 2 Basics  
 9:00 Snack  
 Quiet Sing  
 9:30 Dismiss to Cabins

## Thursday

7:15 Wake Up!  
 8:00 Breakfast and Clean Up  
 9:30 Field Experience  
 12:00 Lunch  
 Free Time  
 2:00 Special Interest Classes  
 4:00 Special Interest Classes  
 6:00 Dinner  
 7:30 Skit Night  
 9:00 Snack  
 Quiet Sing  
 9:30 Dismiss to Cabins

## Friday

7:15 Up and At 'Em  
 8:00 Breakfast  
 Final Clean Up  
 Field Experience  
 12:00 Lunch  
 Departure

**S**tudents learn about the anatomy of a tree by crawling inside an old maple. Students can learn about sugaring by tasting sap, habitats by crawling in trunks, and mapping by studying witness trees.



**C**amouflage! A student learns about animal behavior and adaptations in a camouflage class, where he hides using animal strategies.



# Sample Special Interests:

There are hundreds of special interest classes in the Nature's Classroom curriculum, and our offerings are constantly growing. Over 250 lesson plans come published in *And This Our Life*, a two volume set with follow up activities for you to take and use in your classroom. We will work with your school to provide a curriculum that compliments your teaching goals. This sample list of class offerings is for a group size requiring nine of our instructors. The offerings vary based on your needs, the number of students, the time of year, location and current Nature's Classroom teachers.

SC: Science

MA: Math

HM: Humanities

SS: Social Studies

## 4 PM Monday

- SC Double Bubble (Chemistry of Soap)
- Just Plane Fun (Flight and Aerodynamics)
- Jelly-Belliology (Taxonomy)
- Incredible Edibles (Edible Plants)
- MA Geodome (Engineering and Construction)
- Get Lost (Map and Compass)
- HM NC News (Newspaper Writing)
- SS The Oil Game (Sharing a Limited Resource)
- Revolution (Historical Simulation)

## 2 PM Tuesday

- SC Feed Your Face (Biology of Skin)
- Terrarium Construction (Life Cycles)
- Egg Drop (Physics Package Design)
- Go Fly a Kite (Wind and Atmosphere)
- MA Countryside Measuring (Geometry)
- Up And Away (Hot Air Balloons)
- HM Yes! And... (Improvisation)
- SS Native American Games
- It's The Law (Criminal Justice)

## 4 PM Tuesday

- SC Fruit Lab (Fruit Dissection)
- Marshmellow Meiosis (Genetics)
- Rock-n-Roll (Geology)
- Weather or Not (Meteorology)

- MA Hang In There (Suspension Bridge)
- HM Gum of Your Business (Sales and Marketing)
- Natural Art (Sculpture and Drawing)
- SS I'm OK, You're OK (Exploring Handicaps)
- Trial of the Lorax (Debate and Values)

## 2 PM Thursday

- SC Crystals (Chemistry)
- Rollercoasters (Physics)
- Pollution Solution
- Oh Rats! (Rat Dissection)

- MA Polling (Graphs)
- Speed Boats (Steam Power)
- HM Woods Words (Poetry)
- SS Egg Babies (Responsibility)
- Dyeing Naturally (Dyes)

## 4 PM Thursday

- SC Frog Dissection
- Chemistry Magic
- Pond Probe (Biology)
- Volcano

- MA How Fast Can You Run? (Conversions)

- HM Bookmaking
- On The Streets (Homeless Simulation)

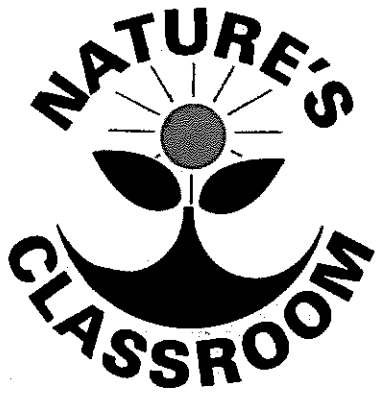
- SS Dream Catchers (Native American Culture)
- Alpha/Beta (Cultural Differences)

**S**tudents participate in a shark dissection as a special interest class option. Dissections are just one type of class that schools can choose to do. With over 500 published lesson plans, Nature's Classroom has hands-on activities to match your curriculum. From the physics of building a hot air balloon to practicing Native American fire-by-friction, classes engage and excite students to learn.

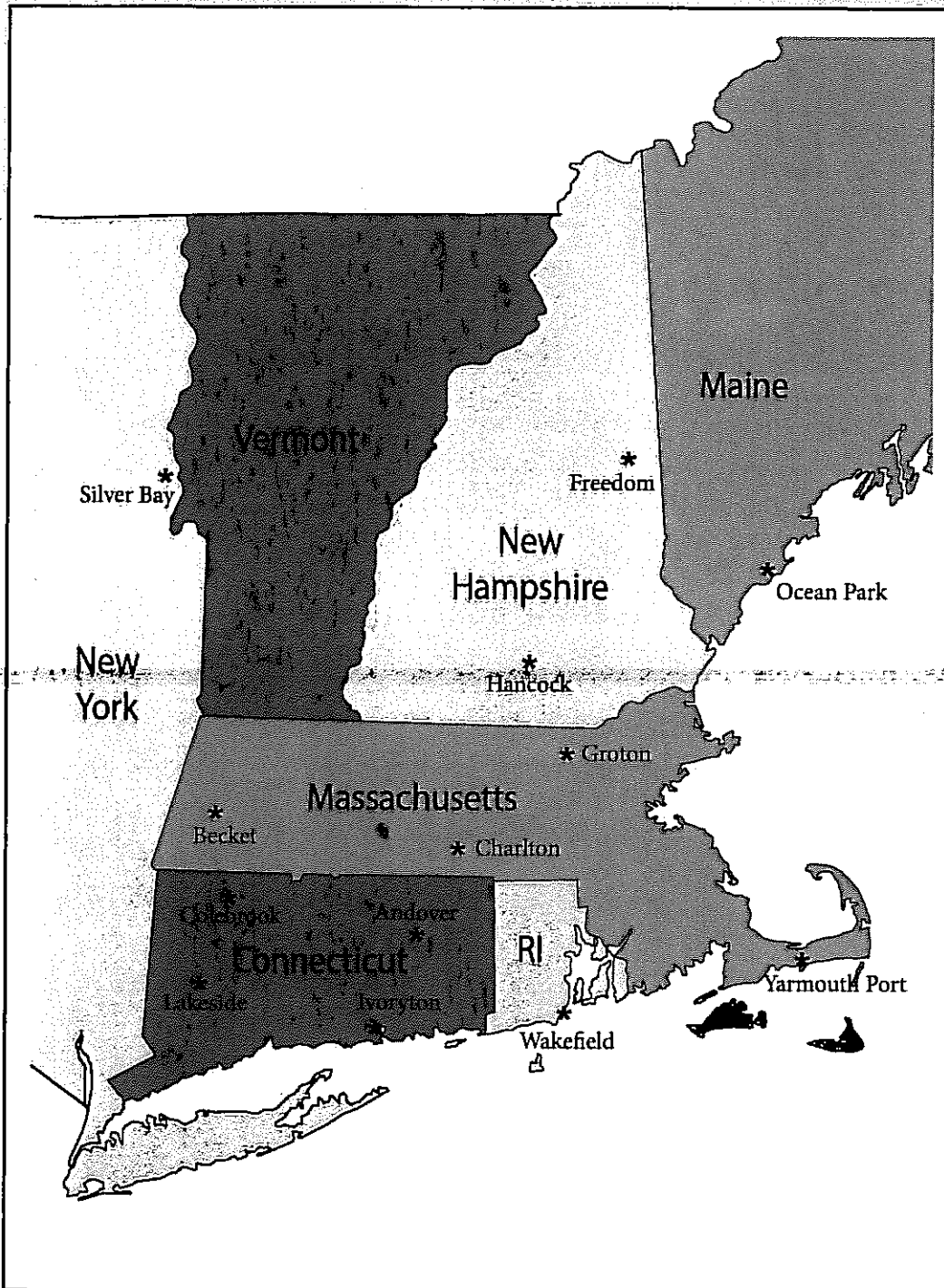
**S**everal locations allow students to explore marine biology: Ocean Park, ME, Yarmouth Port, MA, Wakefield, RI and Ivoryton, CT.



**H**abitat can be found anywhere, from beautiful lakes tucked deep in New England woods, to road sides and old rock walls. Students explore and learn under the guidance of Nature's Classroom teachers, no matter what habitat is available in the location you choose.



# Locations Across New England and New York:



## Connecticut:

- \* Andover
- \* Colebrook
- \* Ivoryton
- \* Lakeside

## Maine:

- \* Ocean Park

## Massachusetts:

- \* Becket
- \* Charlton Hill Top
- \* Charlton Pond Side
- \* Groton
- \* Yarmouth Port

## New Hampshire:

- \* Freedom
- \* Hancock at the Sargent Center

## New York:

- \* Silver Bay

## Rhode Island:

- \* Wakefield

# Additional Programming:

## Early Elementary Education:

Our early elementary programs focus on inquiry-based education. Students are encouraged to explore and ask questions based on their own observations. Nature's Classroom specializes in motivating students to learn through direct, authentic educational experiences. Early elementary programs can be day long, overnight or up to five days long at any of our locations.

## High Ropes Adventure Course:

Nature's Classroom is moving up! Schools now have the option of experiencing a high ropes challenge. Students work together as a team to successfully complete high rope elements. Students explore first hand what it's like to work as a team, gain self-confidence and most importantly, transfer the experience back to the classroom. High rope challenges are an option at several of our locations including Hancock at the Sargent Center, Colebrook and Becket.

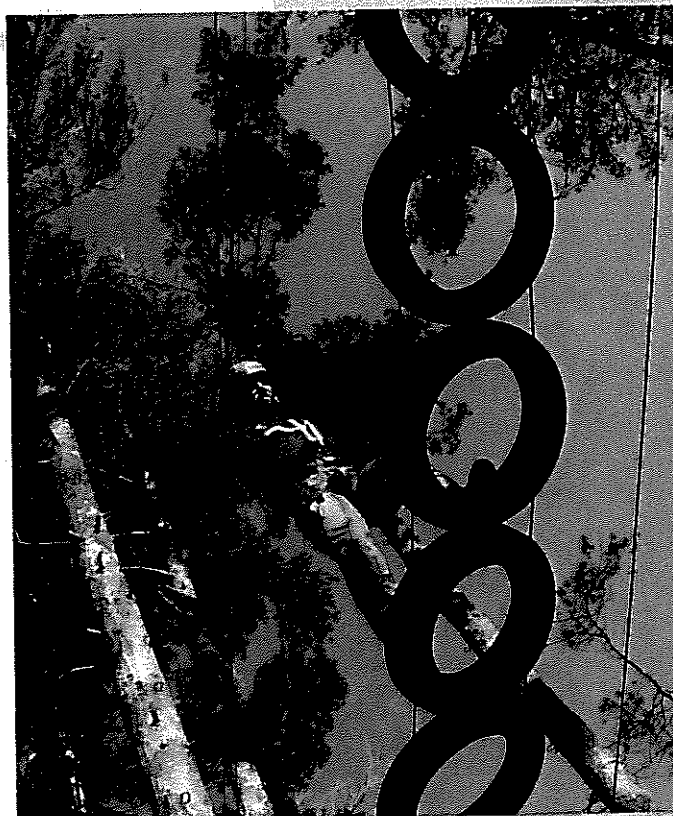
**F**irst and second graders show off the natural and human-made items they discovered while exploring the beach. Hands-on and experiential education encourages children to think about their place in a larger world.

**T**wo students take the first steps towards learning to navigate with a lesson in maps and compasses. These students will learn spatial awareness and math.

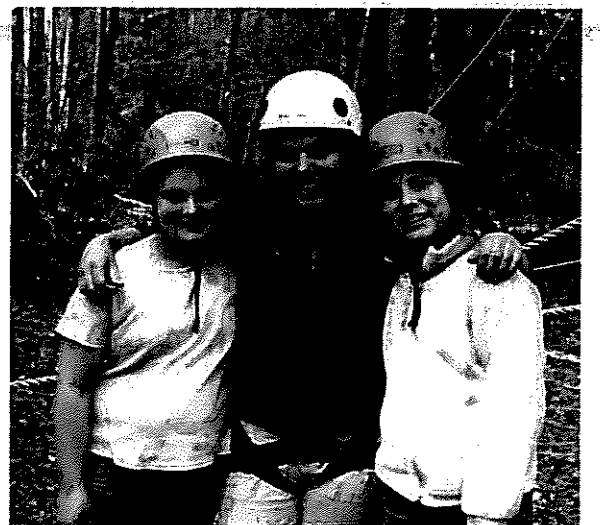


**A**ll high rope elements are closely supervised by trained staff. Equipment is inspected regularly, like this Incline Cargo Net. Students must demonstrate a proficiency in safety protocol before climbing.

**H**igh rope challenges build self-confidence. Students can challenge themselves to cross tires suspended in the air on the Octopus Arm, one of many different types of high rope elements.







**A** Nature's Classroom teacher takes a break from the rope course with two of her students.

**T**eamwork is a huge part of Ropes Challenges, especially the Caterpillar. Without the communication, cooperation and focus of the ground crew, this climber would not succeed. This element is at the Sargent Center in Hancock, HN, where every week students rope up for team-building challenges.

# What is Nature's Classroom?

Founded in 1972, Nature's Classroom is a private, non-profit organization providing environmental education services throughout New England and New York.

**Dr. John G. Santos**  
FOUNDER AND EXECUTIVE DIRECTOR  
BA Amherst College  
M.Ed Worcester State College  
D.Ed Boston College

**Richard Murray**  
ASST EXECUTIVE DIRECTOR  
BS BIOLOGY and GEOGRAPHY  
from Jacksonville State University

**Leila Glaser**  
BUSINESS MANAGER  
BS from Southern Connecticut State  
College

**Beth Short**  
ASSOCIATE DIRECTOR  
BFA THEATER from the University  
of Detroit-Mercy  
MS ECOLOGICAL TEACHING AND  
LEARNING from Lesley University

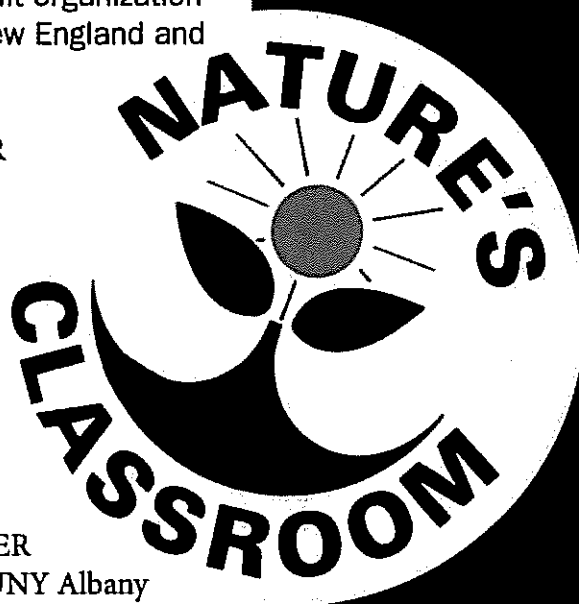
**KT Therrien**  
LOGISTICS MANAGER  
BS BIOLOGY from SUNY Albany  
MS EDUCATION from SUNY Albany

**Laura Graff**  
ASSOCIATE DIRECTOR  
BA INTERNATIONAL RELATIONS  
from Wellesley College

## Our Program Coordinators:

**Ashley Bame**, BS, Aeronautical  
Science, Embry-Riddle  
Aeronautical University  
**Martin Baron**, BA, Mathematics,  
Wheaton College  
**Larry Chambers**, BS, History and  
Geography, University of  
Texas-Tyler  
M.Ed, University of Texas-Tyler  
**Nicholas Dahinden**, BS, Wildlife  
Biology, University of Montana  
**Kristin Fenstermacher**, BS,  
Environmental and Civil  
Engineering, Carnegie Mellon  
University  
**Patrick Fitzgibbons**, BS, Biology,  
Providence College

**Mason Hendershott**, BA, English  
Literature, SUNY Potsdam  
**Steven Hovorka**, BS, Ecology and  
Evolutionary Biology, University of  
Connecticut  
**Olivia Judd**, English, University of  
Massachusetts-Amherst  
**Zachary Paul**, BS, Music Industry,  
University of Southern California  
**Elaine Richardson**, BS, Environmental  
Science, University of  
Massachusetts-Amherst  
**Marissa Saltzman**, BA, English, Mt.  
Holyoke College  
**Eric Weiss**, BS, Environmental Studies,  
SUNY Buffalo  
**Joseph Williams**, BA, Psychology,  
Hampden-Sydney College



**D**r. Santos and two Nature's Classroom teachers enjoy the new sledding slope at Charlton Hill Top. Winter is a wonderful time of year to explore the great outdoors with children. On a snowy day, students can track animals through the woods or do a math lesson on sledding velocity.

# A Few of Our Schools:

Nature's Classroom works with over 450 schools annually. For a complete listing of schools, please contact our main office at (800) 433-8375 or email us at [info@naturesclassroom.org](mailto:info@naturesclassroom.org). Feel free to ask any of our schools about their Nature's Classroom experience.

Amherst Middle School- Amherst, NH  
Renaissance School- Jackson Heights, NY  
Gilsun School- Gilsun, NH  
Howard Elementary School- New Lebanon, NY  
PS 89- New York, NY  
Assawampsett School- Lakeville, MA  
Locke Middle School- Billerica, MA  
Tamarac Elementary School- Troy, NY  
Rollinsford Elementary School- Rollinsford, NH  
Gloucester Elementary Schools- Gloucester, MA  
Bagnall School- Groveland, MA  
Franklin School- Stratford, CT  
Wilcoxson School- Stratford, CT  
Staples Elementary School- Easton, CT  
Convent of the Sacred Heart- Greenwich, CT  
Central Middle School- Greenwich, CT  
Eli Whitney School- Stratford, CT  
Hamagrael School- Delmar, NY  
Callahan School, Harrisville, RI  
Smith College Campus, Northampton, MA  
Healey School- Somerville, MA  
St. Anthony School- Fitchburg, MA  
Clinton Middle School- Clinton, MA  
Cider Mill School- Wilton, CT  
Passios Elementary School- Lunenburg, MA  
Litchfield Middle School- Litchfield, NH  
Wood School- Plainville, MA  
Trinity Catholic Academy- Southbridge, MA  
Donovan School- Randolph, MA  
Estabrook School- Lexington, MA  
Fannie Lou Hamer Middle School- Bronx, NY  
Fieldston Lower School- Bronx, NY  
Jefferson Science Magnet School- Norwalk, CT  
Thompson Middle School- N. Grosvenordale, CT  
Bryant Elementary School- Bridgeport, CT  
Fitch Middle School- Groton, CT  
Highville Charter School- Hamden, CT  
Kennedy Longfellow School- Cambridge, MA  
Kent Center School- Kent, CT  
Kingsley Montessori School- Boston, MA  
Broad Street School- Nashua, NH  
Stowe Middle School- Stowe, VT  
Moses Brown School- Providence, RI  
Lincoln Public Schools- Lincoln, MA  
Lisbon Regional School- Lisbon, NH  
Millis Middle School- Millis, MA  
New Beginnings Family Academy Charter School- Bridgeport, CT  
New Boston Central School- New Boston, NH  
Advanced Math & Science Academy Charter School- Marlborough, MA  
Thurgood Marshall Middle School- Bridgeport, CT  
Newark Academy- Livingston, NJ  
Side-By-Side Community Charter- Norwalk, CT  
South Elementary School- Andover, MA  
Stratford Academy/Johnson House- Stratford, CT  
Swasey Elementary School- Brentwood, NH  
Thomas Hooker School- Bridgeport, CT  
Tisdale School- Bridgeport, CT  
Cutler Middle School- Mystic, CT  
Winship Elementary School- Brighton, MA  
Woodland Hill Montessori- Rensselaer, NY  
East Meadow School- Granby, MA  
Thatcher Montessori- Milton, MA  
British School of Boston- Boston, MA  
Brown Middle School- Newton, MA  
Carlisle Public School- Carlisle, MA  
Cheshire Academy- Cheshire, CT  
Fowler School- Maynard, MA  
Duffy School- West Hartford, CT  
Tuttle Middle School- South Burlington, VT  
St. Mary's Academy- Hoosick Falls, NY  
Glenmont Elementary School- Glenmont, NY  
Bow Memorial School- Bow, NH  
Bridge Street School- Northampton, MA  
Conant Elementary School- Acton, MA  
Hubbardston Center School- Hubbardston, MA  
Hopkinton Middle School- Hopkinton, MA  
Epping Middle School- Epping, NH  
North Brookfield Elementary- N. Brookfield, MA  
Manlius Pebble School- Dewitt, NY  
Assumption School- Millbury, MA  
Ayer Middle School- Ayer, MA  
Ruggles Lane School- Barre, MA  
Douglas Elementary School- Acton, MA  
Eldredge School- E. Greenwich, RI  
Engineering and Science University Magnet School- New Haven, CT  
Briscoe Middle School- Beverly, MA  
Petersham Center School- Petersham, MA  
Wareham Middle School- Wareham, MA  
Staten Island Academy- Staten Island, NY  
Sharon Center School, Sharon, CT  
Greenville Central School- Greenville, NY  
Worthington Hooker Middle School- New Haven, CT  
Franklin School- Keene, NH  
Lyceum Kennedy School- New York, NY  
Merriam Elementary School- Acton, MA  
Mill Ridge Intermediate School- Danbury, CT  
Wooster School- Danbury, CT  
Kellogg School- Falls Village, CT  
St. Patrick's School- Pelham, NY  
Yalesville School- Wallingford, CT  
Presentation of Mary Academy- Hudson, NH  
Bryantville Elementary School- Pembroke, MA  
Kennelly School- Hartford, CT  
Kensington Elementary School- Kensington, NH  
Sanborn School- Andover, MA  
Mary McDowell- Brooklyn, NY  
Nathan Hale Middle School- Norwalk, CT  
St. Elizabeth Ann Seton School- Bellmore, NY  
CT Plunkett School- Adams, MA  
St. Anthony School- Everett, MA  
St. Francis of Assisi School- Litchfield, NH  
St. Peter's Central Catholic School- Worcester, MA  
Steere Farm Elementary School- Pascoag, RI  
Chesterfield, MA- Chesterfield, NH  
Duxbury Middle School- Duxbury, MA  
South Middle School- Braintree, MA  
Freetown Elementary School- East Freetown, MA  
Todd School- Briarcliff Manor, NY  
Trinity Catholic School- Southbridge, MA  
Weare Middle School- Weare, NH  
West Boylston Middle School- West Boylston, MA  
Chester Academy- Chester, NH  
French American School- Mamaroneck, NY  
Clintonville Elementary- North Haven, CT  
Roton Middle School- Norwalk, CT  
Our Lady of the Valley School- Uxbridge, MA  
Walsh Intermediate School- Branford, MA  
Ichabod Crane School District- Valatie, NY  
Undermountain Elementary School- Sheffield, MA  
Milton Elementary School- Milton, NH  
Lyndon Town School- Lyndonville, VT  
Gove Middle School- Raymond, NH  
Post Road School- White Plains, NY  
Scotland Elementary School- Scotland, CT  
Howard School- West Bridgewater, MA  
Bethel Middle School, Bethel, MA  
Henry Wilson Memorial School- Farmington, NH  
PS 87- New York, NY  
Bowman School- Lexington, MA  
Bancroft School- Worcester, MA  
Sunapee Elementary School- Sunapee, NH  
Davisville Middle School- N. Kingston, RI  
Manhattan East School- New York, NY  
Kickemjit Middle School- Warren, RI  
Abby Kelly Foster Charter School- Worcester, MA  
Old Greenwich School- Old Greenwich, CT  
Horace Mann School- Melrose, MA  
Inter-Lakes Middle School- Meredith, NH  
Hartford Magnet Middle School- Hartford, CT  
Squadron Line School- Simsbury, CT  
Providence Country Day School- E. Providence, RI  
Lycee Francais- New York, NY  
Winchester Elementary School- Winchester, NH  
Daniels School- Keene, NH  
Adams Montessori School- Quincy, MA  
Hopkins Academy- Hadley, MA  
Woodford Hollow Elementary School- Woodford, VT  
Foxborough Regional Charter- Foxborough, MA  
People's Elementary School- Brooklyn, NY  
Rocky Hill School- E. Greenwich, RI  
Wolcott Elementary- Wolcott, VT  
Amherst Middle School- Amherst, NH  
Saltonstall School- Salem, MA  
North End School- New Britain, CT  
Norton School- Cheshire, CT  
Page School- West Newburyport, MA  
Parker Middle School- Reading, MA  
Prospect Hill Academy- Somerville, MA  
Rochester Memorial School- Rochester, MA  
Sawyer School- Bolton, MA  
Bridge Street School- Northampton, MA  
Cutler Middle School- Mystic, CT  
Douglas elementary School- Acton, MA  
Estabrook School- Lexington, MA  
Fannie Lou Hamer Middle School- Bronx, NY  
Kingsley Montessori School- Boston, MA  
Lisbon Regional School- Lisbon, NH  
Lyceum Kennedy School- New York, NY  
Millis Middle School- Millis, MA  
Norton School- Cheshire, CT  
Parker Middle School- Reading, MA  
Salisbury School- Lakeville, CT  
St. Peter's Central Catholic School- Worcester, MA  
Todd School- Briarcliff Manor, NY  
Trinity Catholic School- Southbridge, MA  
Chatham Middle School- Chatham, NY





# NATURE'S CLASSROOM

**Environmental Education Dedicated to Motivational Learning  
and Community Awareness**

[WWW.NATURESCCLASSROOM.ORG](http://WWW.NATURESCCLASSROOM.ORG) 800.433.8375

