

**CAREER EDUCATION ASSOCIATES OF NORTH CENTRAL ILLINOIS**

**Resolution**

Whereas, the Intergovernmental Agreement between participating districts of the Career Education Associates of North Central Illinois, EFE 150, provides for amending the agreement under Article VIII-AMENDMENTS, Section 8.1.1; and

Whereas, the Illinois State Board of Education has issued rule changes to Title 23: Education and Cultural Resources, Subtitle A: Education, Chapter I: State Board of Education; Subchapter g: Special Courses of Study; Part 254 Career and Technical Education, replacing Part 254 with Part 256 Career and Technical Education; and

Whereas the Board of Governors by a majority of the vote cast at a regular Board of Governors meeting on \_\_\_\_\_, approved an amendment to add an Addendum to meet the requirements outlined in Section 256.210 Cooperative Agreements, Submission, and Criteria for Approval contained in Part 256 Career and Technical Education (a copy of which is attached to this resolution).

Be it hereby resolved that the \_\_\_\_\_  
Name of School District

Ratifies the action of the Board of Governors and authorizes that the Intergovernmental Agreement for the Career Education Associates of North Central Illinois (CEANCI) with other qualified and participating School Districts be amended as follows;

The addition of an Addendum to meet the requirements of Part 256 Career and Technical Education – Section 256.210 Cooperative Agreements, Submission, and Criteria for Approval.

**CERTIFICATION**

I, \_\_\_\_\_, Secretary of the Board of Education of \_\_\_\_\_

No. \_\_\_\_\_, \_\_\_\_\_ County, Illinois do hereby certify that the above and foregoing is a true and correct copy of a certain resolution which was duly passed by said BOARD at its regular meeting held on the \_\_\_\_\_ day of \_\_\_\_\_ 2021.

\_\_\_\_\_  
Secretary of the Board

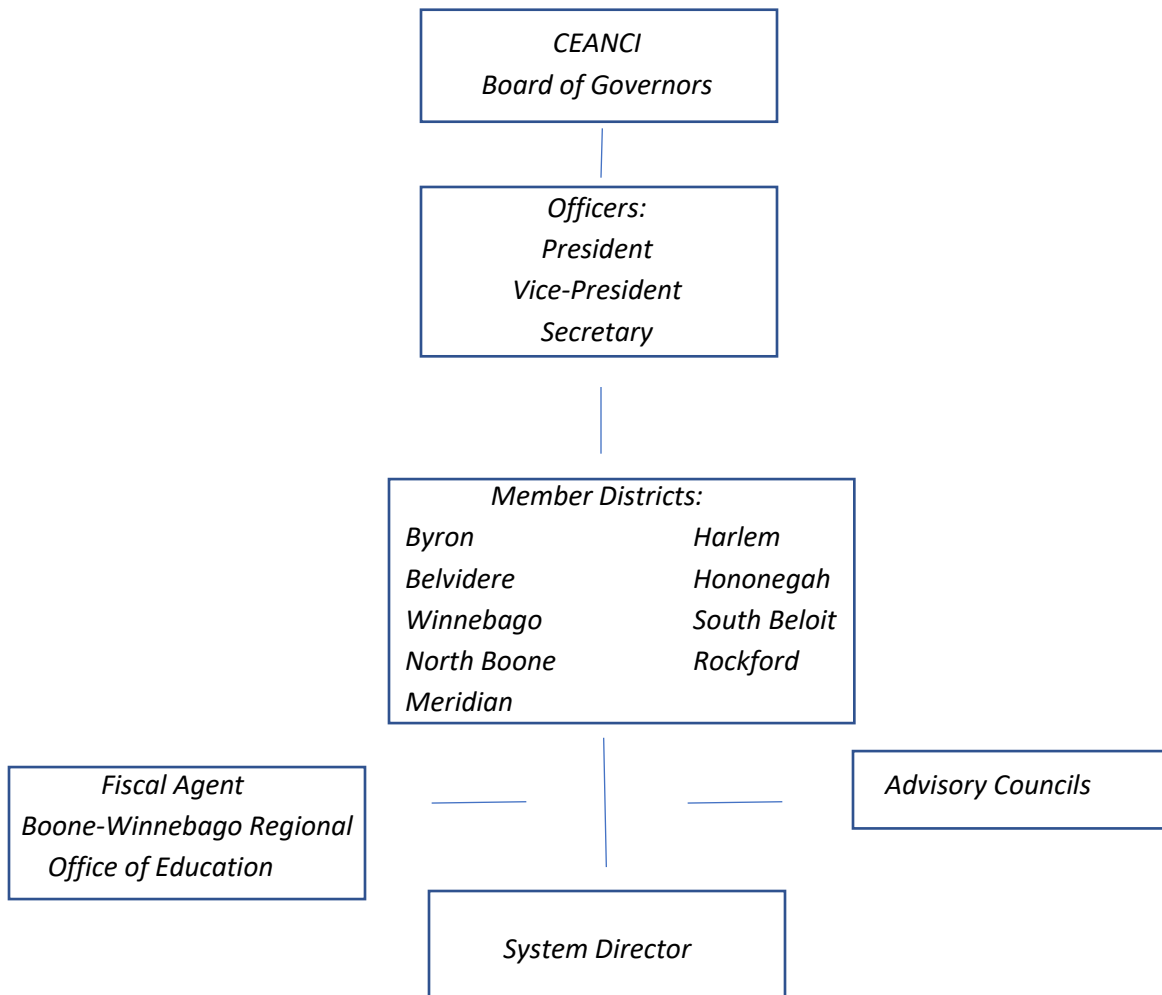
_____ District No.	_____ Counties	_____ District No.	_____ Counties
_____ City	_____ State	_____ City	_____ State

Addendum to the Career Education Associates of North Central Illinois Intergovernmental Agreement to meet the requirements of Title 23: Education and Cultural Resources, Subtitle A: Education, Chapter I: State Board of Education Subchapter g: Special Courses of Study, Part 256 Career and Technical Education (and the Strengthening Career and Technical Education for the 21<sup>st</sup> Century Act):

**1) Graphic of organizational structure and narrative detailed explanation of administrative structure for the system**

The CEANCI consortium, EFE 150, organization consists of nine school districts within and adjacent to the boundaries of Boone, Winnebago and Ogle Counties. The consortium is governed by a Board of Governors composed of the superintendents or a superintendent representative from all member districts. Article 2 Section 2.3 designates Boone-Winnebago Regional Office of Education as the administrative and legal fiscal agent for the organization.

Organizational administration is the responsibility of the System Director, appointed by the Board of Governors and employed by the Administrative Agent, Boone-Winnebago Regional Office of Education. The System Director reports to the Board of Governors.



**2) Comprehensive plan of action for completion of the applicable needs assessments necessary to meet the requirements of this Part and Perkins V**

The System Director is responsible for directing the completion of the applicable needs assessment. The System Director will assist all of the Districts in the completion of the Local Needs Assessment (LNA). The System Director will collaborate with Rock Valley College Perkins Coordinator and the WIOA, Workforce Development Director to combine information and data from the local needs assessments to complete a Comprehensive Local Needs Assessment (CLNA). The System Director is responsible for entering the CLNA into IWAS using the format/form designated and approved by the Illinois State Board of Education.

**3) Clearly articulated and evidence-based narrative of procedures to ensure equitable access for all students. These procedures shall include both recruitment and retention initiatives and an intervention plan for identified disparities and gaps**

As a home serving school, each member District is responsible for initiatives for CTE recruitment, retention, and equitable access for students within their District. These initiatives and actions are described and reported within the District's Local Needs Assessment (LNA) and annual grant plans submitted to the System. The CEANCI is responsible for initiatives and activities that support District efforts in CTE recruitment, retention, and equitable access for students. CEANCI region initiatives and activities will target those special population students with identified disparities and/or gaps in performance indicators for the region. Ninth grade CTE enrollment data, along with disaggregated performance indicator data will be utilized as evidence-based metrics.