

Student Survey Results

Shorewood School District

Spring 2020

Student Engagement Survey

The survey uses approximately 50 questions to measure a student's engagement in both their school work and school community. The tool is designed to provide educational leaders with important information such as:

- How students spend their free time
- Their perception of the rigor and relevance of the curriculum
- How they utilize various support systems
- Their involvement in school life
- Planning they have done for life after high school graduation

Student Engagement Survey

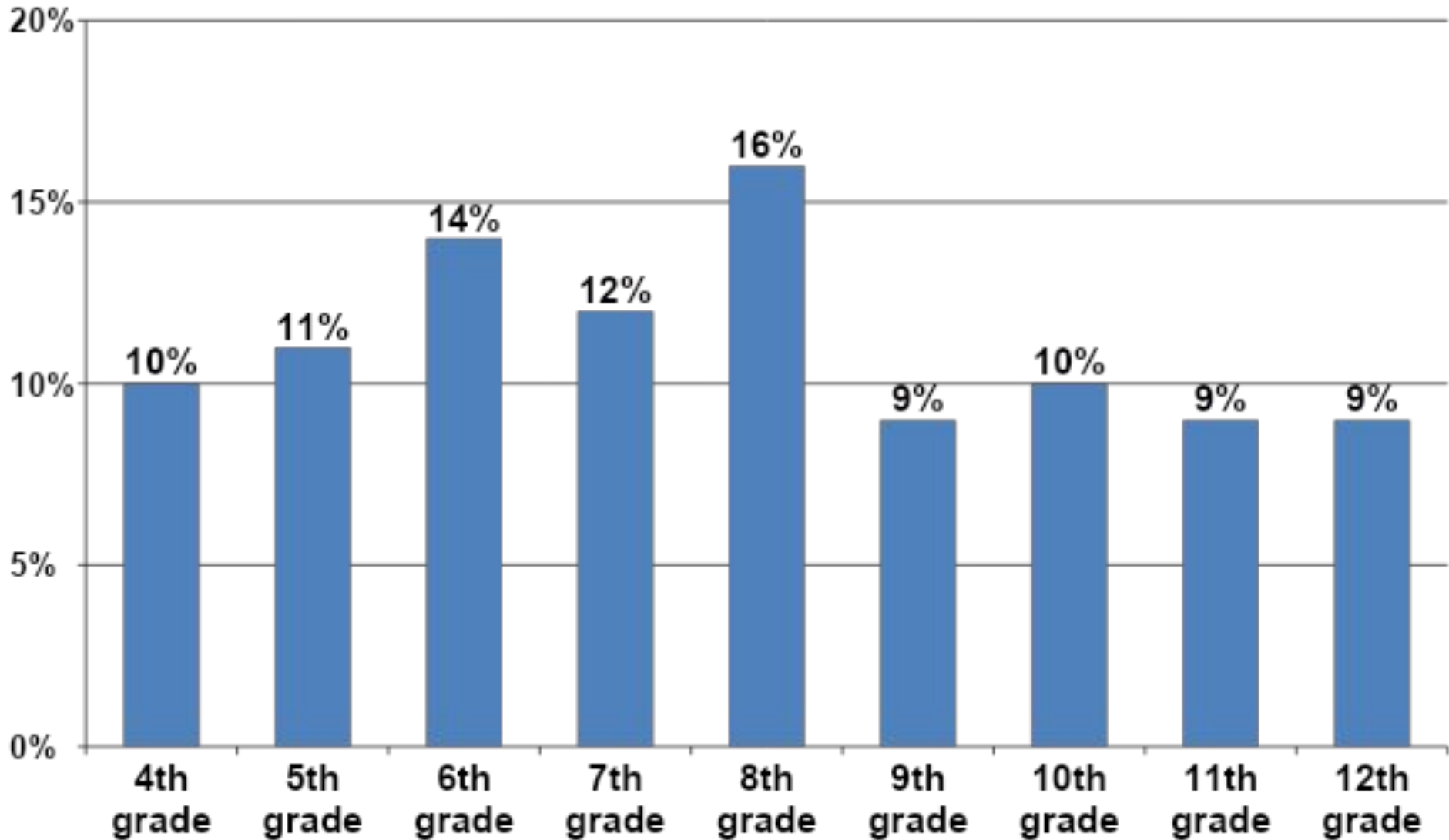
The goal in conducting the survey is to identify how Shorewood School District staff can best support each of their students to ensure their lifelong success upon high school graduation.

Survey Summary

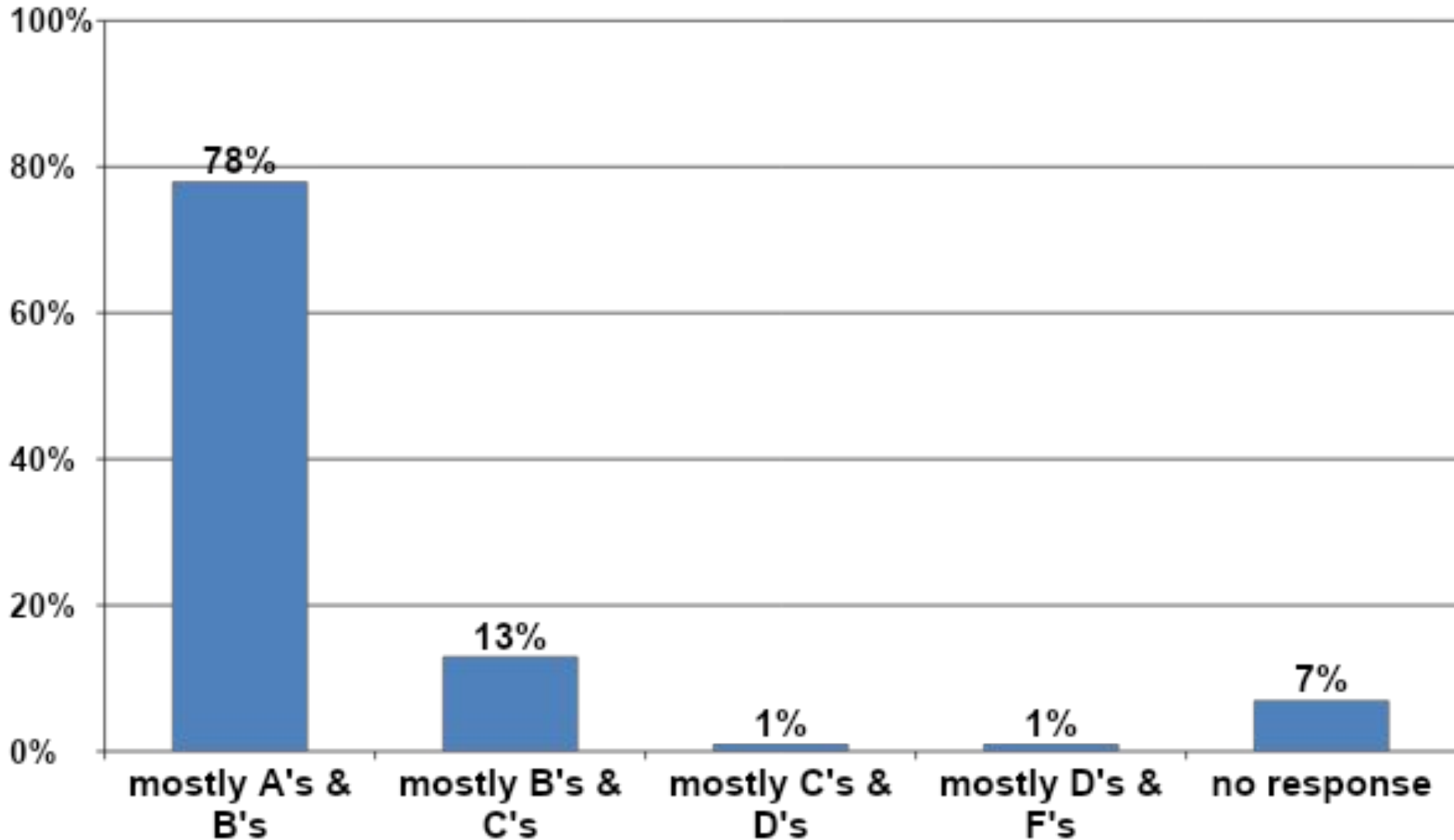
- Survey conducted in May of 2020
- Students in 4th - 12th grade participated
- Total responses = 752

Respondent Information

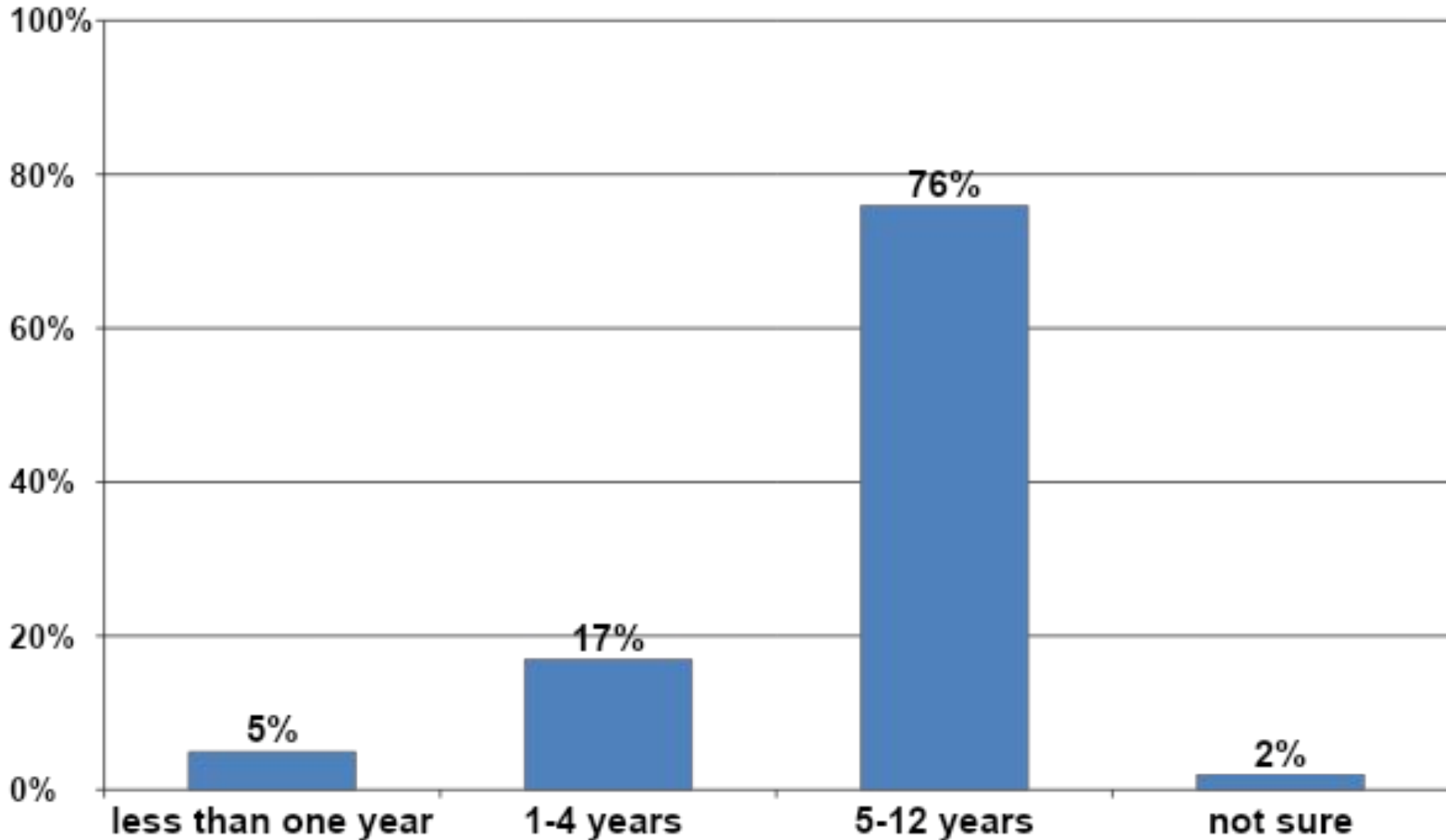
Grade level:



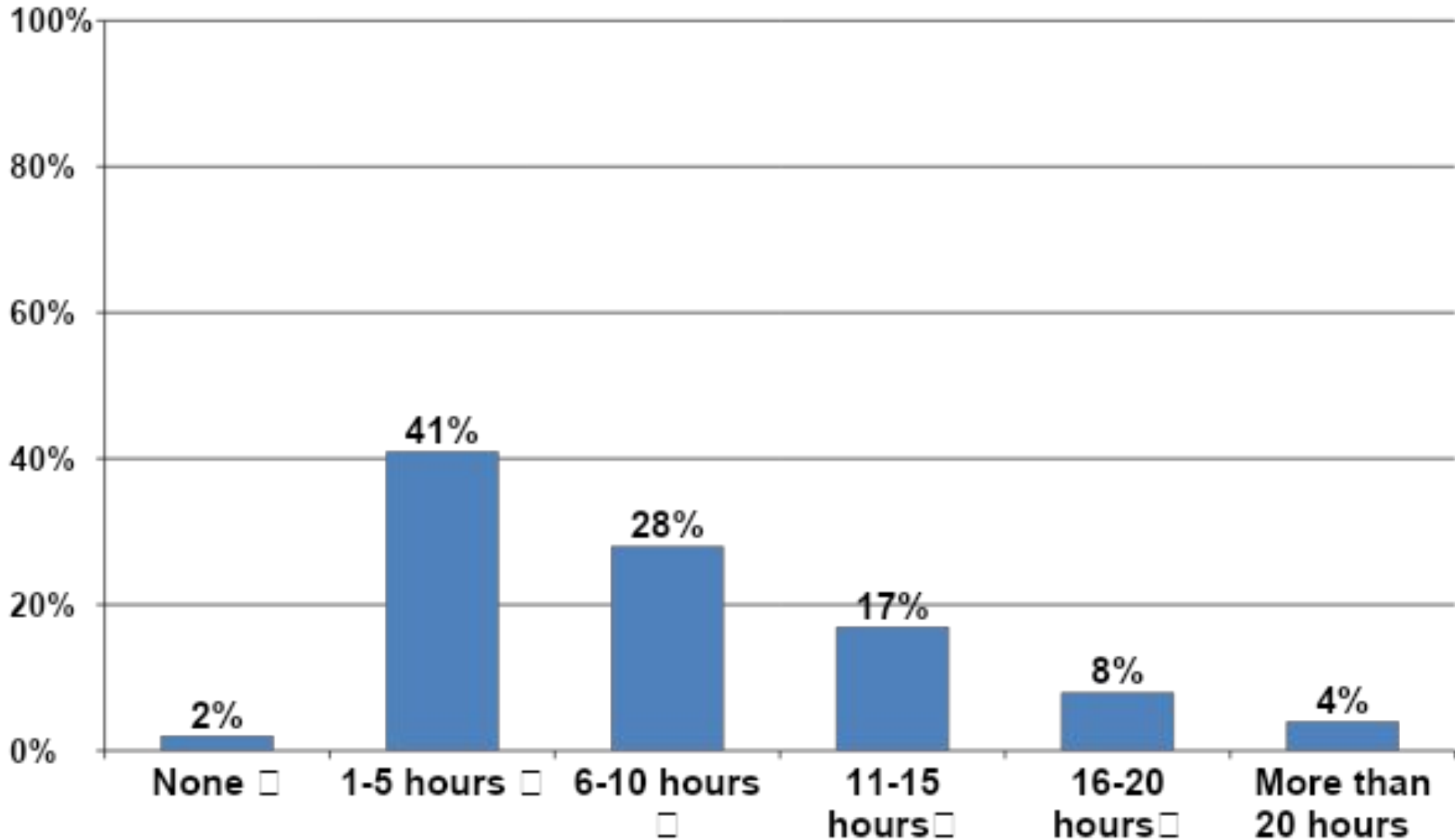
What have your recent report cards been like?



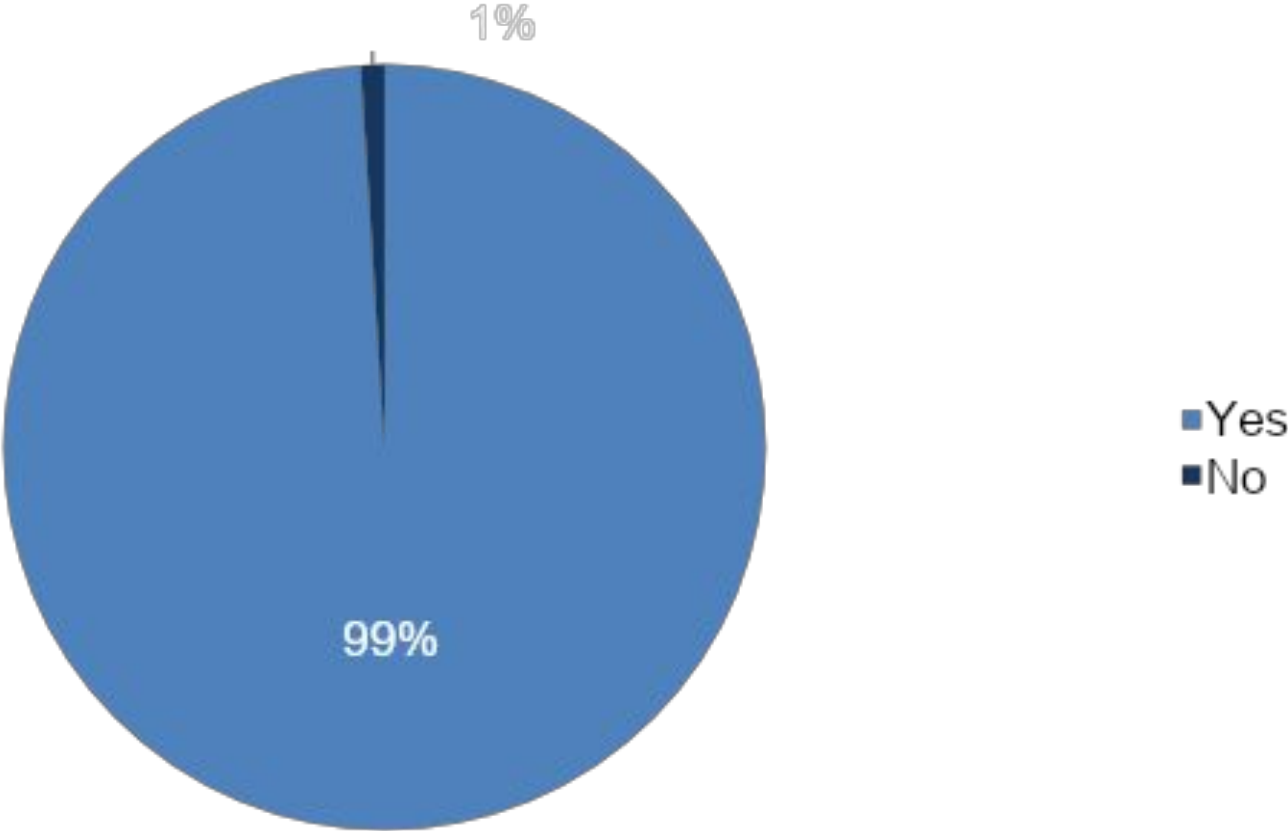
How many years have you attended this school district?



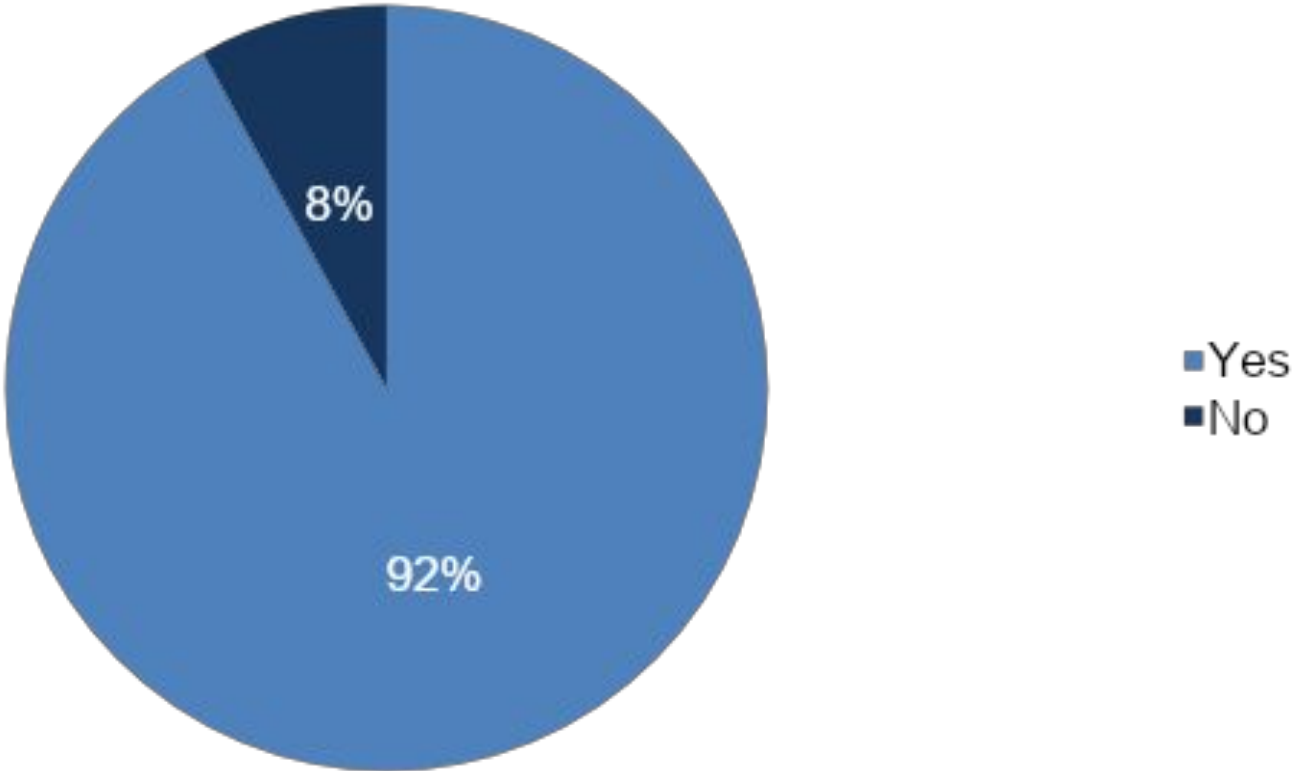
About how many hours a week do you do homework?



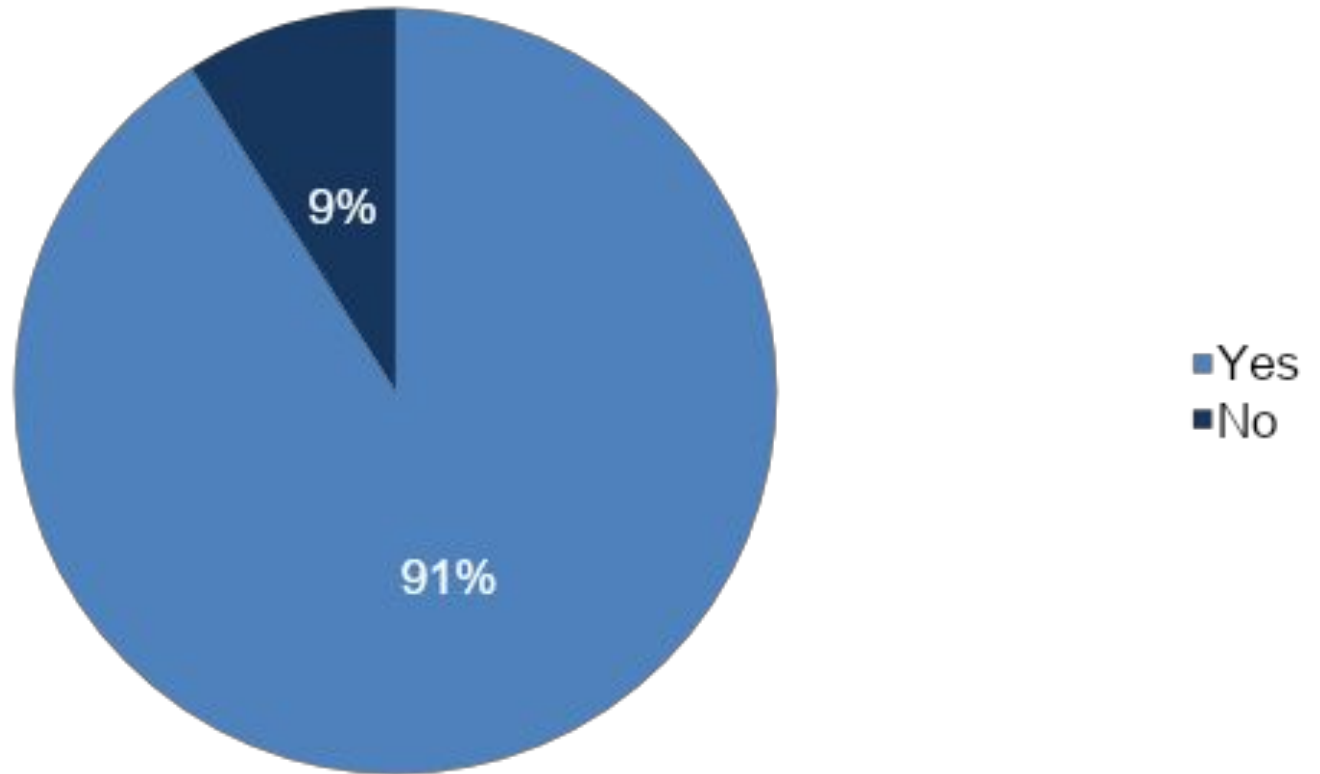
I have access to the internet at home?



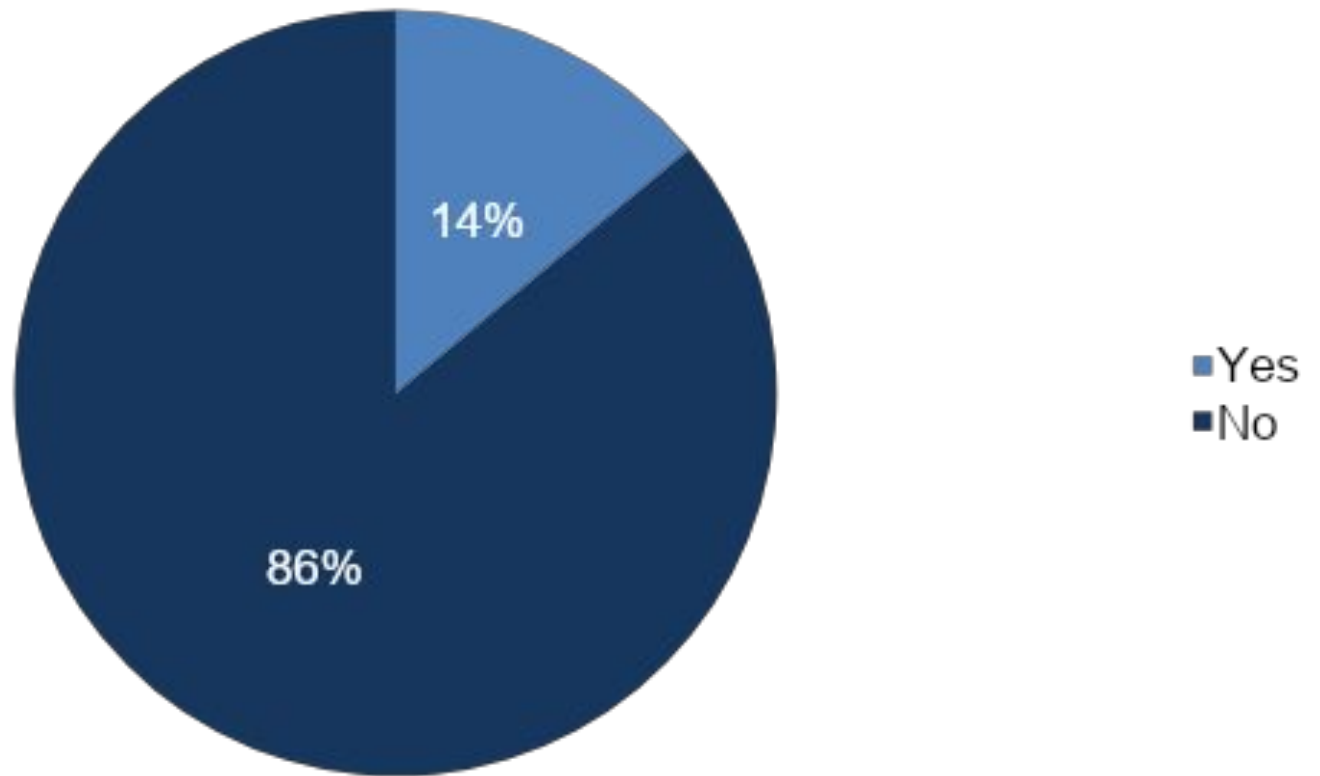
Has anyone in your immediate family (parents or siblings) graduated from college?



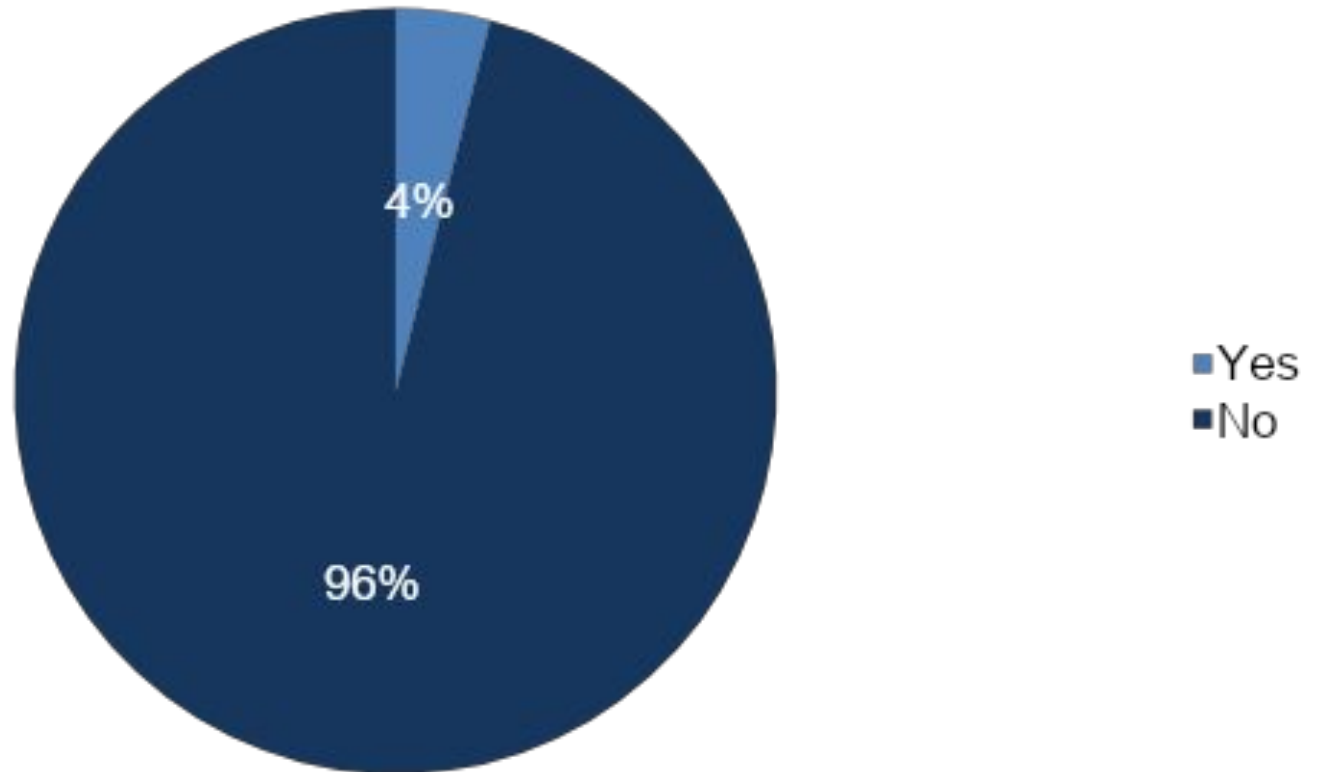
Do you receive special education services?



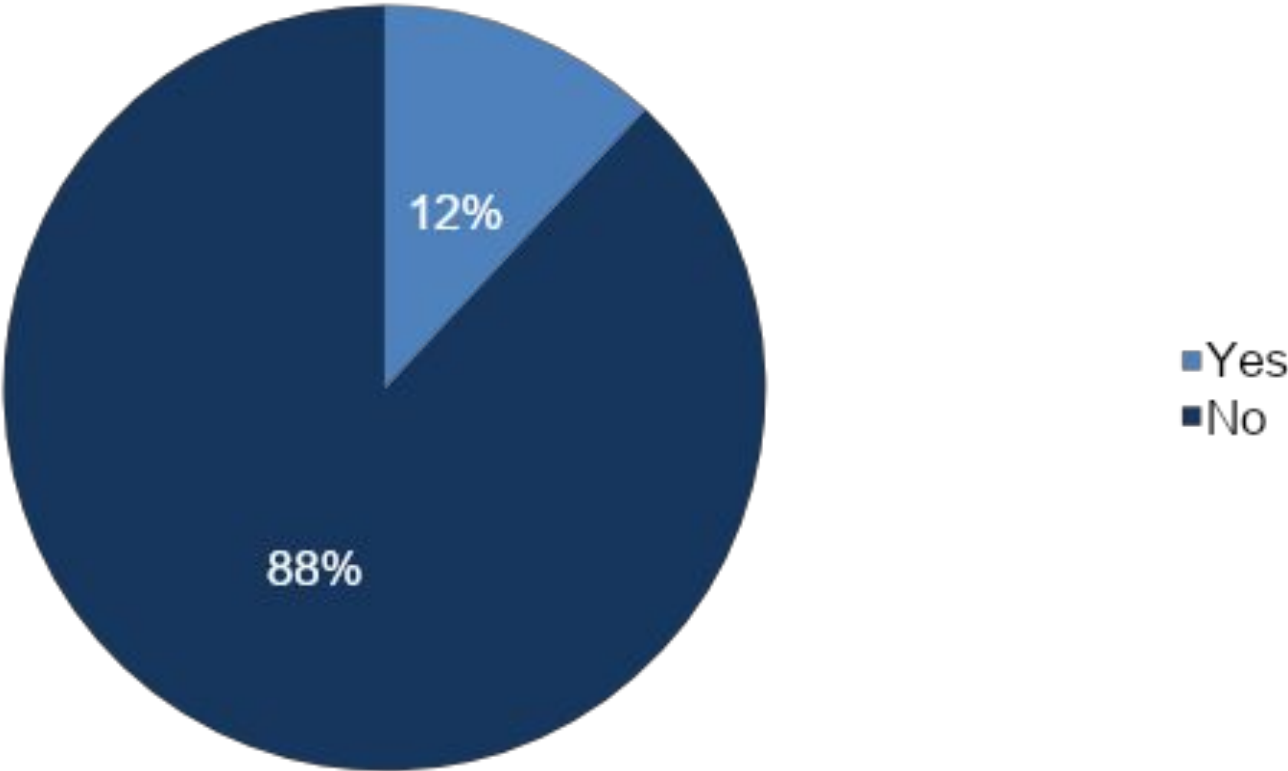
Do you receive free or reduced lunch?



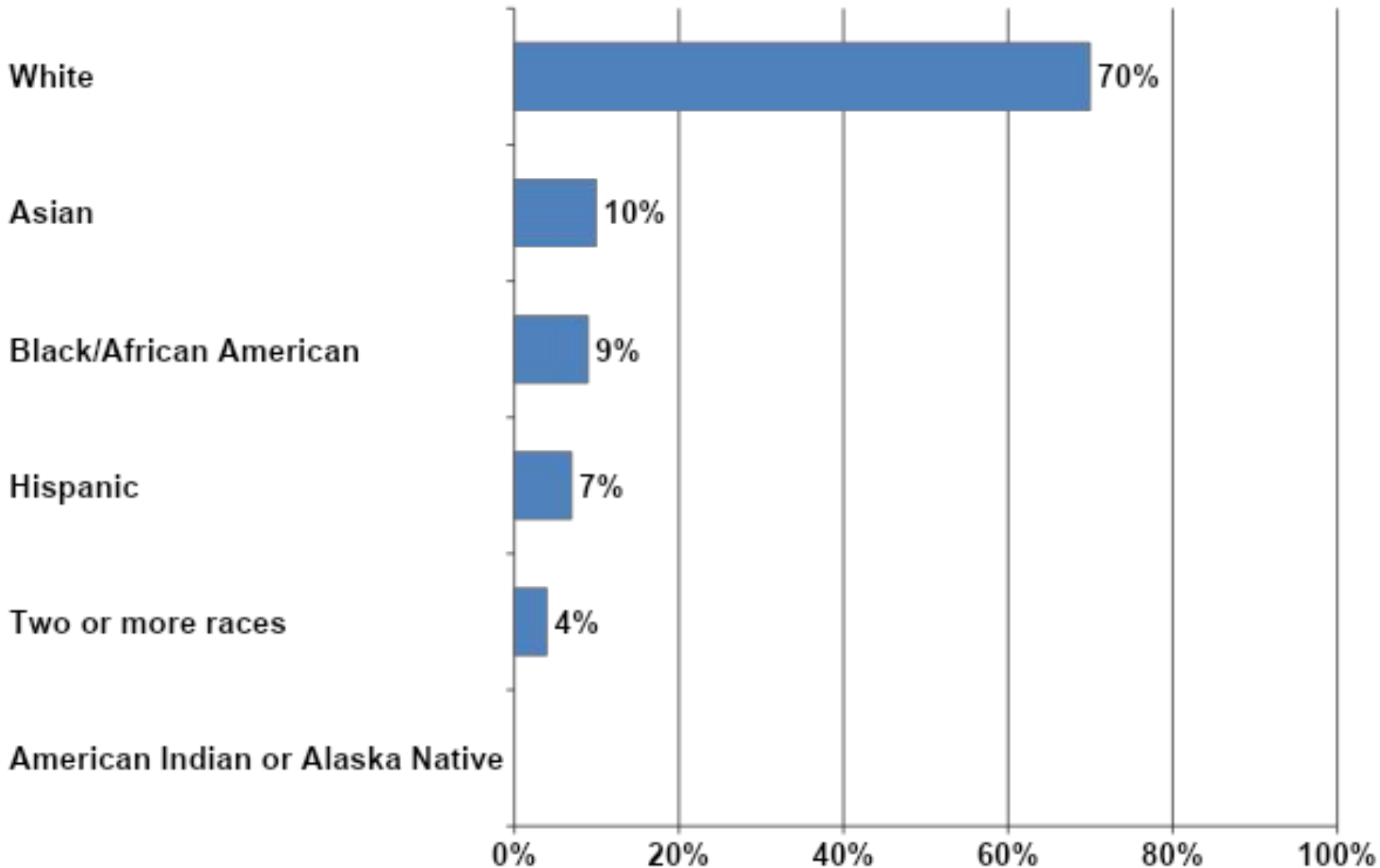
Are you an English Language Learner?



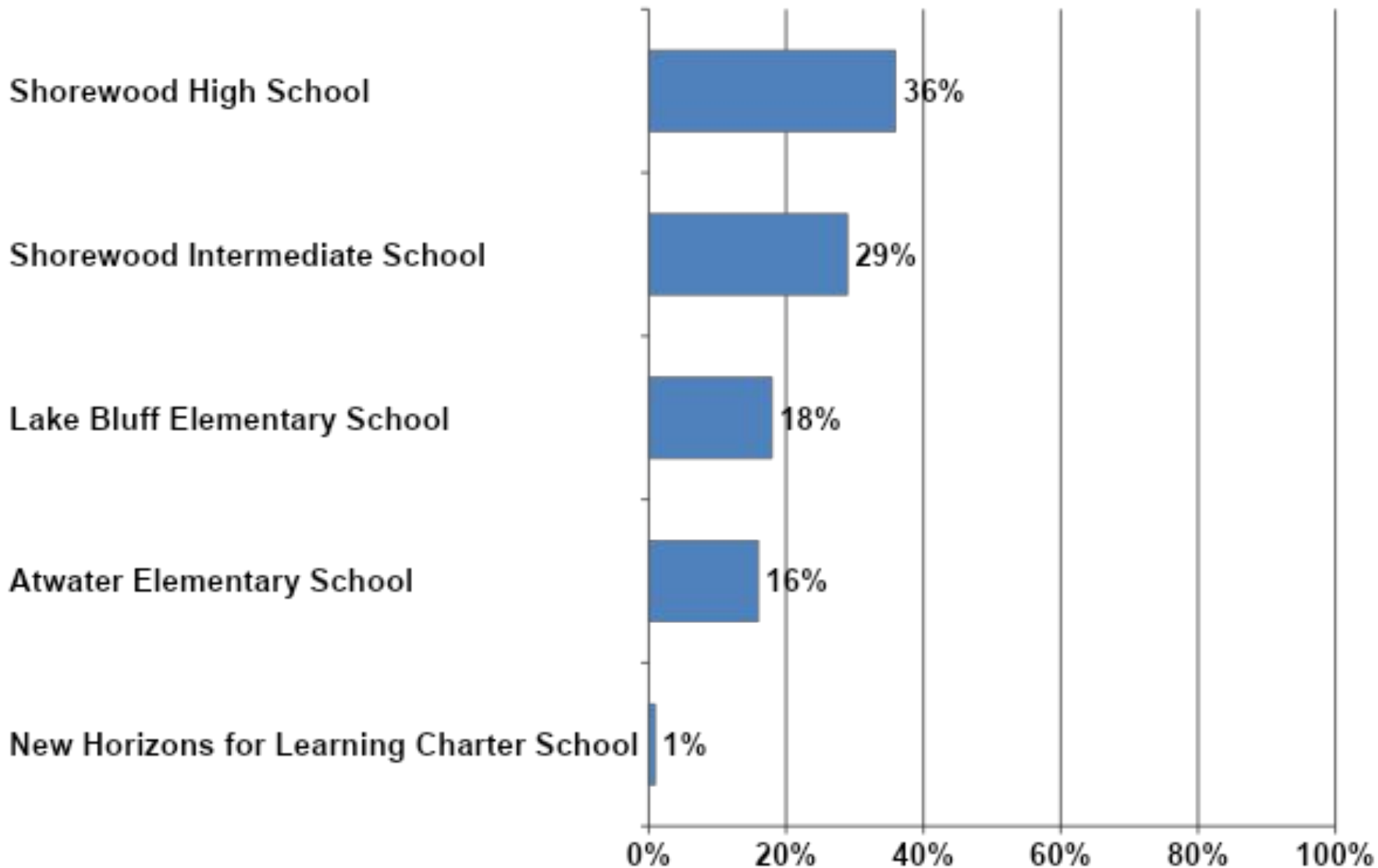
Are you considered Gifted and Talented?



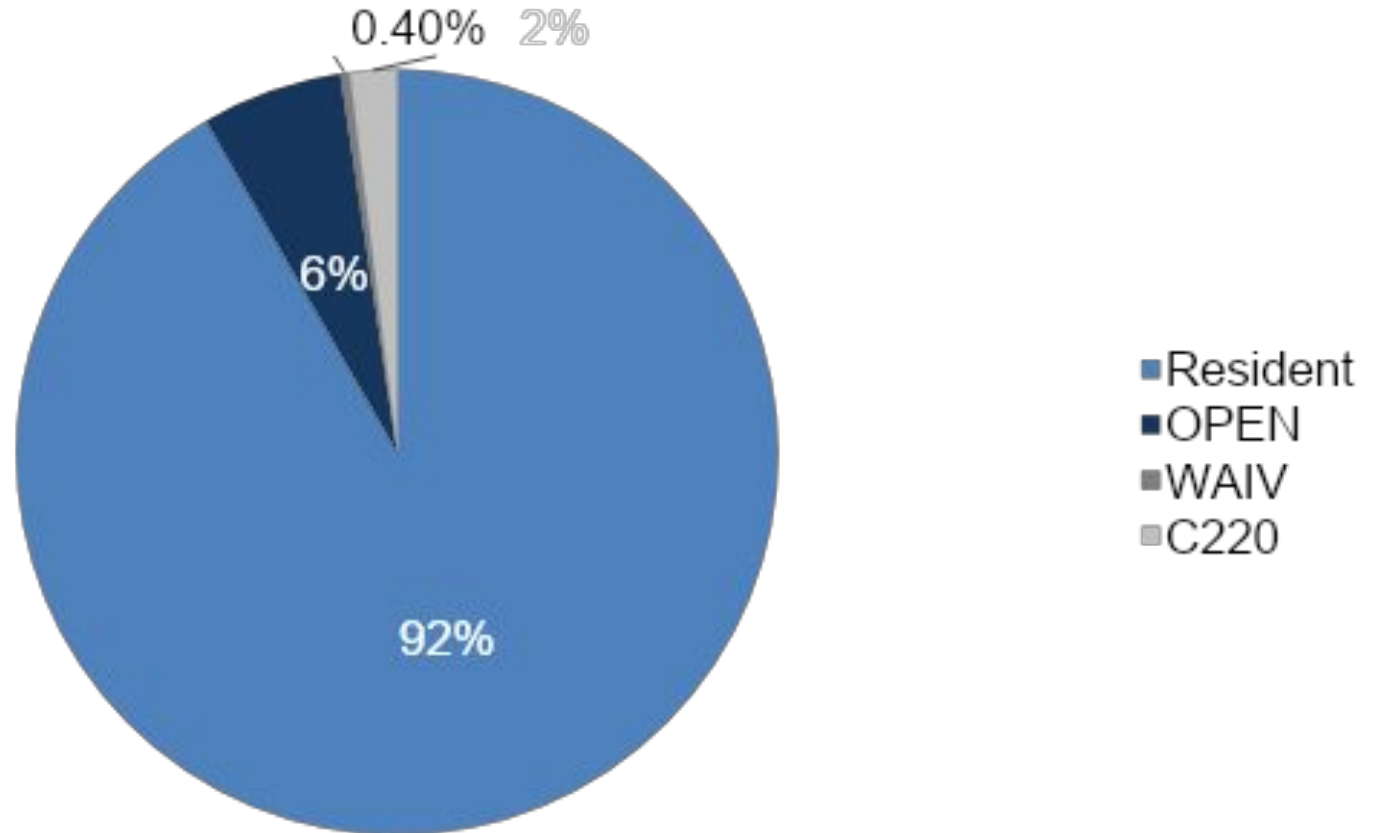
What is your ethnicity?



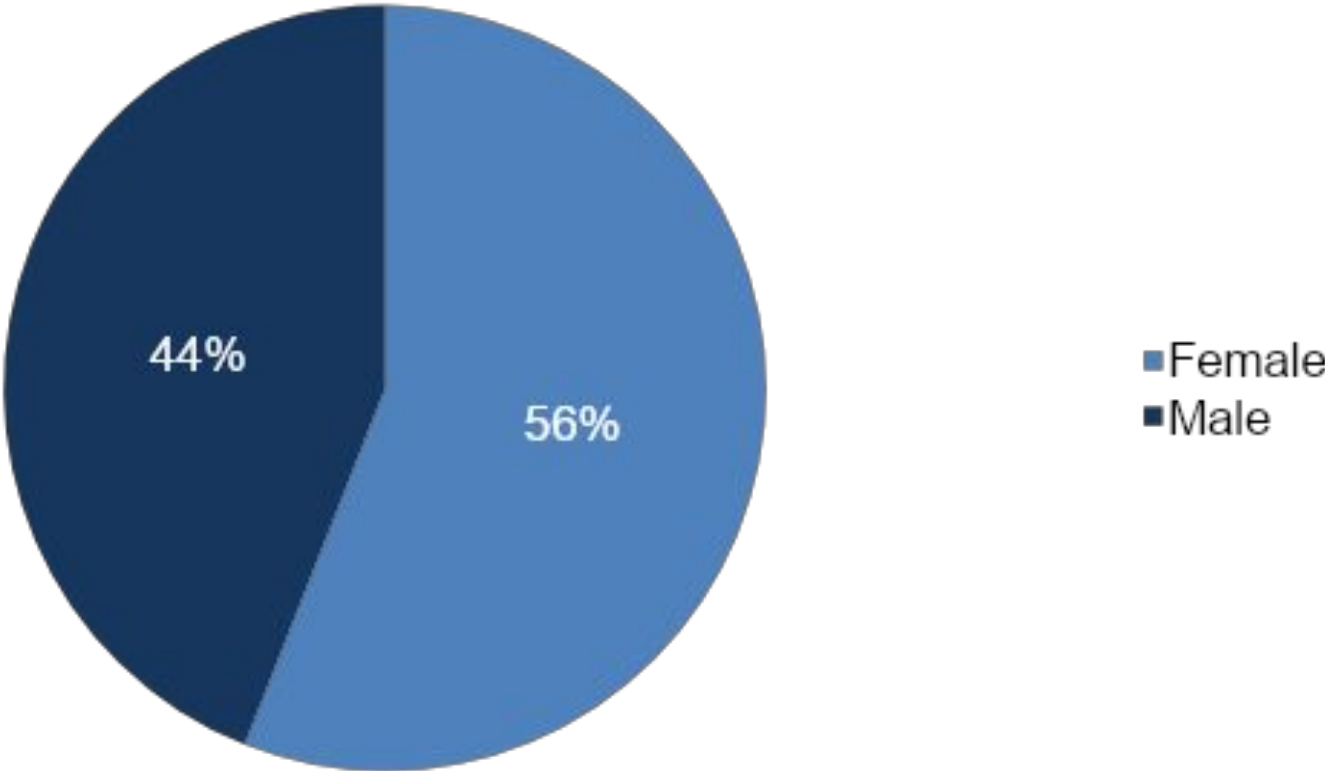
What school do you attend?



What is your enrollment type?



Gender:



Survey Responses

Me (Slide 1/2)

Always (4), Usually (3), Sometimes (2), Never (1)

Item	District Average (n)	Comparison	Percentile
I enjoy going to school.	2.66 (711)	2.47	90
I feel sorry for others when they are hurting.	3.43 (718)	3.28	86
I have a good relationship with adults at school.	3.29 (709)	3.15	86
I help others when I see a need.	3.12 (714)	2.97	80
I work well with other students.	3.01 (718)	2.93	75

Me (Slide 2/2)

Always (4), Usually (3), Sometimes (2), Never (1)

Item	District Average (n)	Comparison	Percentile
I am able to get through challenging times.	3.07 (708)	2.99	67
I am proud of my school.	2.88 (684)	2.86	49
I feel I can be myself at school.	2.96 (699)	2.92	40
If I commit to a task I will do what it takes to get it done.	3.12 (714)	3.17	28
When I accomplish/learn a skill, I push myself to learn something new.	2.81 (702)	2.90	18

Wellness

Always (4), Usually (3), Sometimes (2), Never (1)

Item	District Average (n)	Comparison	Percentile
I make healthy eating choices most of the time.	3.07 (709)	2.91	89
I exercise at least three times per week.	3.36 (709)	3.27	82
I get enough sleep most nights.	2.92 (713)	2.77	80
I have a healthy lifestyle.	3.22 (703)	3.13	79
I know how to resolve conflict in a healthy way.	3.12 (700)	3.04	73
When I feel stressed I know how to cope.	2.86 (697)	2.82	52

My School (Slide 1/2)

Always (4), Usually (3), Sometimes (2), Never (1)

Item	District Average (n)	Comparison	Percentile
I am respected and treated fairly at school.	3.20 (690)	2.96	96
There is one or more adults in my school who care about my future.	3.56 (634)	3.37	93
There is at least one adult in my school that I can talk to about a personal problem.	3.21 (646)	3.07	93
There is at least one adult in the school that I can talk to about my classwork when I need it.	3.56 (686)	3.39	90
I help my friends make good decisions.	3.32 (689)	3.22	83
My classmates care about me.	2.99 (620)	2.88	81
I am satisfied with our school's efforts to prevent bullying.	2.95 (661)	2.77	76

My School (Slide 2/2)

Always (4), Usually (3), Sometimes (2), Never (1)

Item	District Average (n)	Comparison	Percentile
I feel I belong at this school.	3.07 (679)	2.99	73
I feel safe at school.	3.24 (692)	3.11	67
I am satisfied with the education I'm receiving at this school.	3.14 (689)	3.08	57
I follow the rules at school.	3.36 (700)	3.32	55
Our school is clean.	2.91 (692)	2.91	46
Our school has the space, rooms and equipment to allow me to be successful.	3.39 (692)	N/A	N/A

The District wants to be sure our school facility meet your needs.
Please tell us what you think of the following areas:

I like them (3), They're ok (2), I don't like them (1)

Item	District Average (n)
The library	2.75 (685)
The gym	2.63 (681)
The classrooms	2.61 (687)
The stairways	2.52 (669)
The hallways	2.51 (680)
The locker rooms	2.16 (487)
The cafeteria	2.00 (608)
The restrooms	1.83 (687)

My Learning (Slide 1/2)

Always (4), Usually (3), Sometimes (2), Never (1)

Item	District Average (n)	Comparison	Percentile
My teachers are interested in my thoughts and opinions.	3.23 (639)	2.99	96
My parents/guardian expect me to do well in school.	3.84 (681)	3.77	93
My teachers give me extra help when I need it.	3.35 (673)	3.15	87
My teachers explain things in a way that makes sense to me.	3.00 (687)	2.89	81
I feel comfortable participating in class.	2.98 (687)	2.96	57
I set goals for the school year.	2.90 (680)	2.86	57
I explore careers/jobs that may interest me after high school.	3.11 (625)	3.07	56
If there were no grades given in classes, I would still do my work.	2.94 (656)	2.98	41

My Learning (Slide 2/2)

Always (4), Usually (3), Sometimes (2), Never (1)

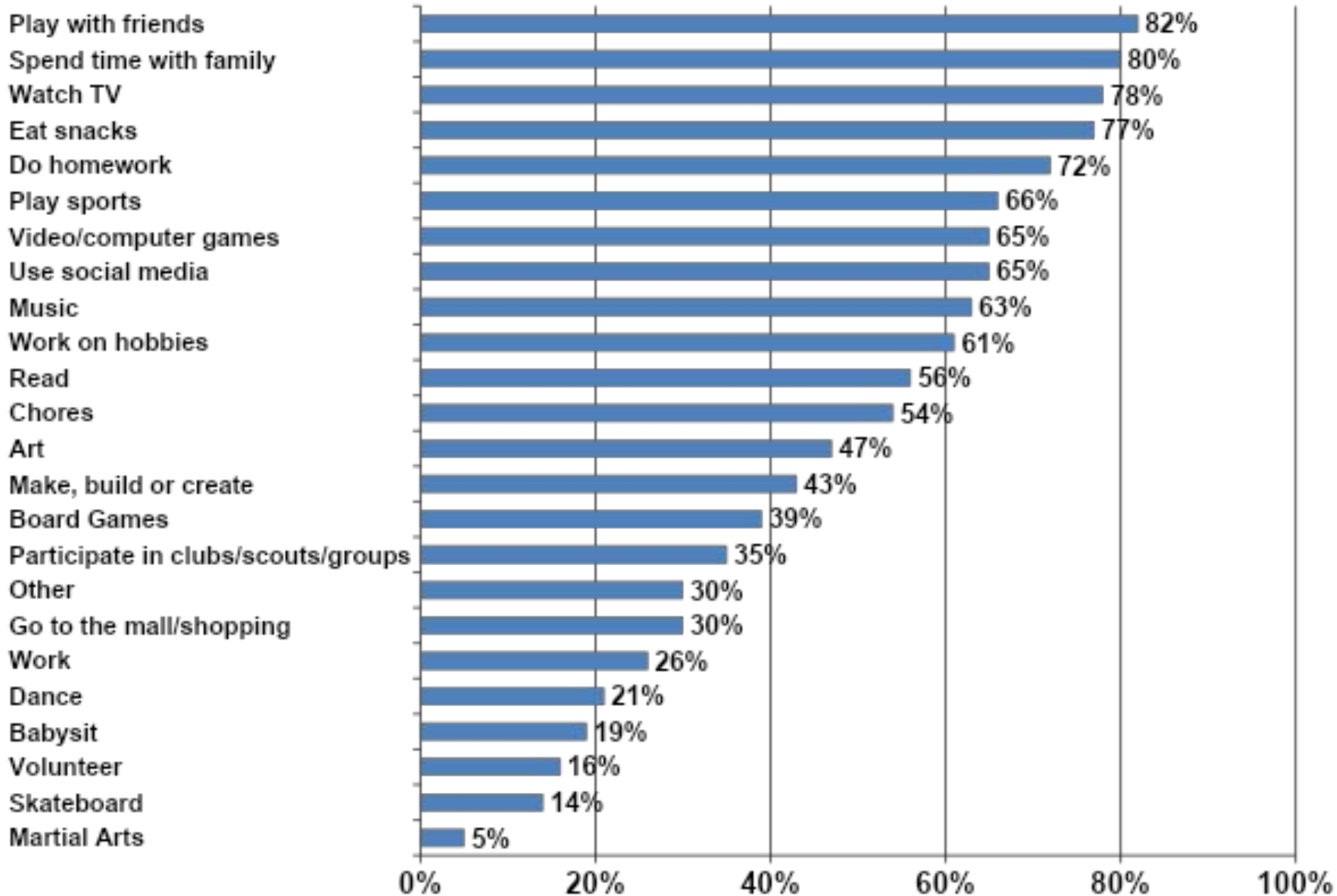
Item	District Average (n)	Comparison	Percentile
I put my best effort into my school work.	3.18 (690)	3.22	38
I believe what I am learning in school will help me to be successful in life.	2.85 (673)	2.95	29
My classes challenge me.	2.77 (684)	2.81	23
I believe what I am learning in school is preparing me for next year.	2.95 (663)	3.19	6
I get to do something I enjoy in school.	3.08 (683)	N/A	N/A
I believe what I am learning in school allows me to use my own original voice beyond the classroom.	2.87 (626)	N/A	N/A
I feel like I master a topic before I move on to the next topic.	2.81 (670)	N/A	N/A
I believe what I am learning in school connects to the real world.	2.57 (675)	N/A	N/A

My Free Time

Always (4), Usually (3), Sometimes (2), Never (1)

Item	District Average (n)	Comparison	Percentile
I participate in one or more clubs, sports and activities.	3.42 (670)	3.27	85
There are clubs, sports or activities that interest me.	3.44 (679)	3.38	71
I plan ahead and make good choices.	3.05 (683)	3.13	20

What do you usually do in your free time?



Equity

Always (4), Usually (3), Sometimes (2), Never (1)

Item	District Average (n)	Comparison	Percentile
I can get extra help and support when I need it at school.	3.32 (669)	N/A	N/A
I feel my culture and beliefs are represented at my school.	3.02 (583)	N/A	N/A
Teachers hold all students accountable for their actions and behavior.	2.92 (673)	N/A	N/A
All students are treated fairly when school rules are broken.	2.73 (632)	N/A	N/A

Tolerance

Strongly agree (5), Agree (4), Disagree (2), Strongly disagree (1)

Item	Average (n)
I feel comfortable interacting with people from backgrounds different than myself.	4.54 (686)
At my school, I have the opportunity to interact with people from backgrounds different than myself.	4.36 (686)
I know how to report harassment or racial abuse to school staff.	4.28 (687)
Teachers in my school work hard to create a safe and welcoming environment for all students.	4.24 (687)
I would feel comfortable reporting harassment or racial abuse to school staff.	4.09 (687)
I feel my ideas, opinions, and concerns are listened to by school staff.	3.92 (686)
Students in our school treat each other with respect.	3.51 (686)

During this school year, how many times have YOU experienced and/or witnessed the following problems in your school?

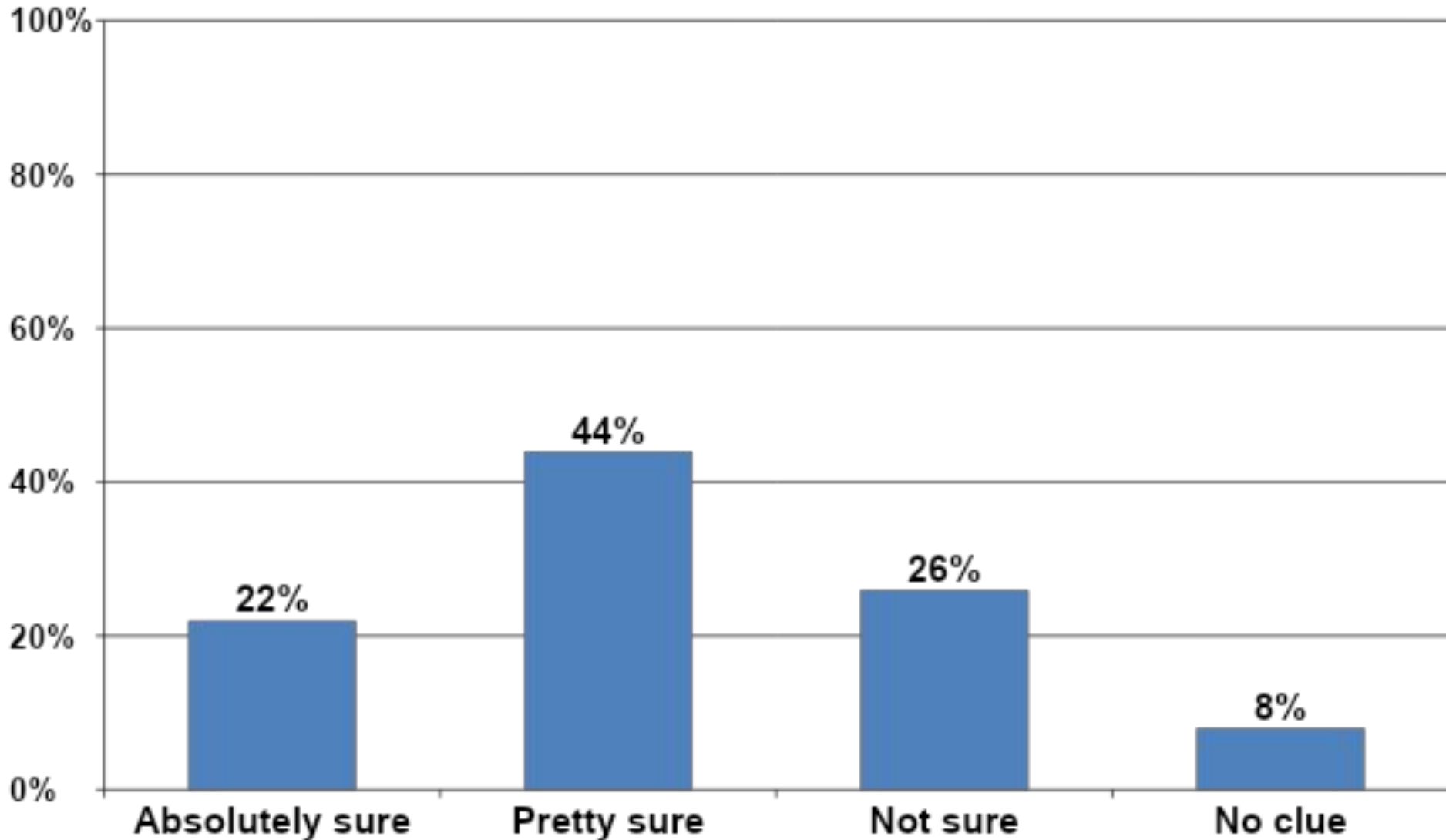
Never (1), One or more times this year (2), One or more times per month (3), One or more times per week (4), Daily (5)

Item	Average (n)
Staff using racial slurs, epithet or other derogatory put-downs	1.14 (686)
Graffiti or Vandalism with racial slurs or symbols	1.35 (686)
Cyber bullying	1.45 (686)
Bullying	1.77 (686)
Students using racial slurs, epithet or other derogatory put-downs	1.83 (686)
Teasing or ridiculing	2.43 (686)

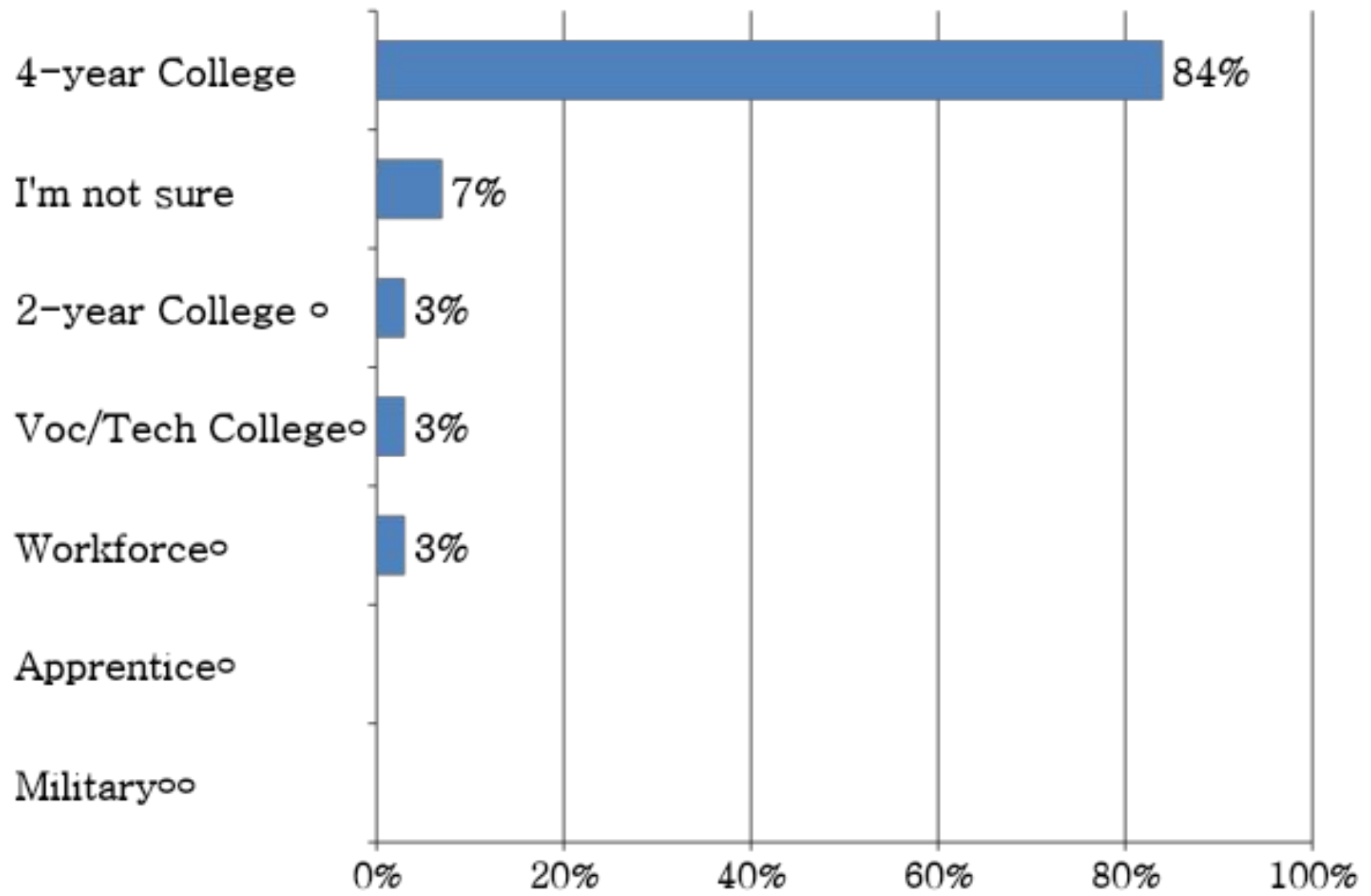
Plans after High School

(Grades 11-12 only)

I know what I want to do for a career/job when I'm an adult:

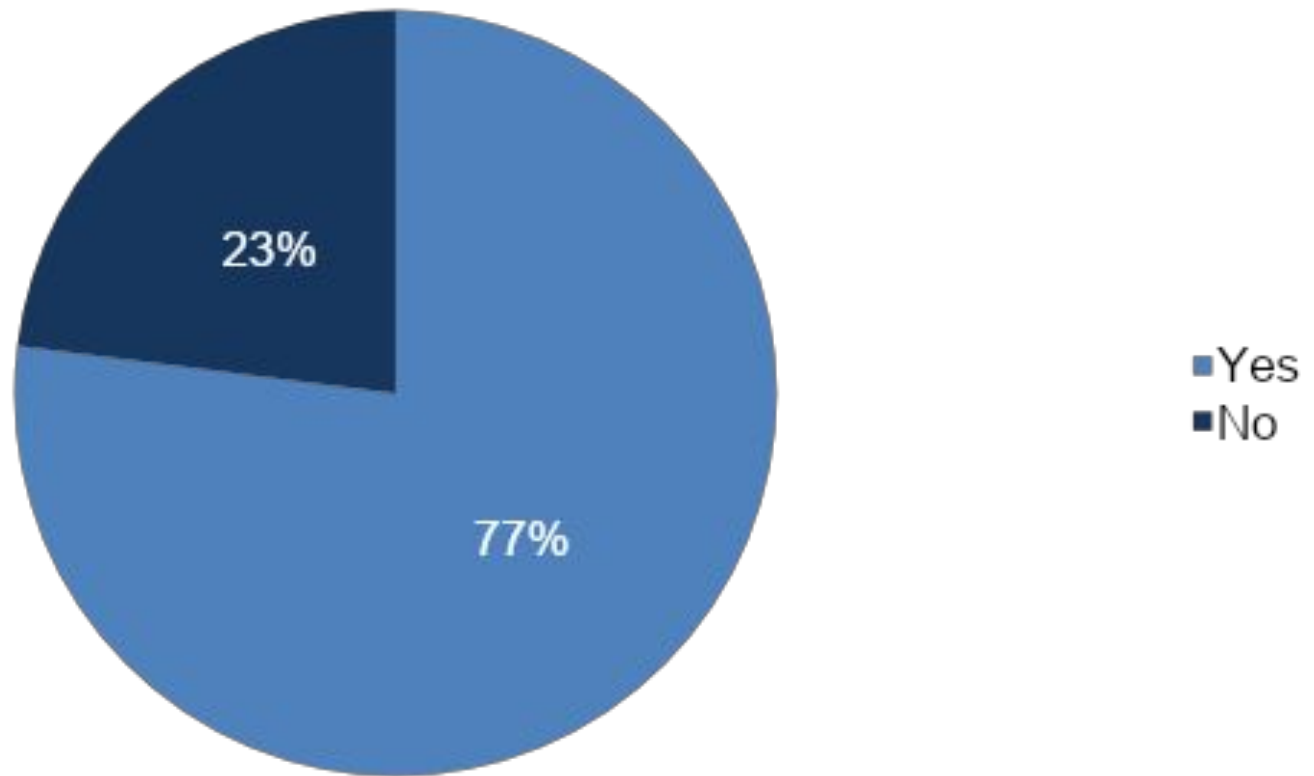


What do you plan to do immediately after high school graduation?

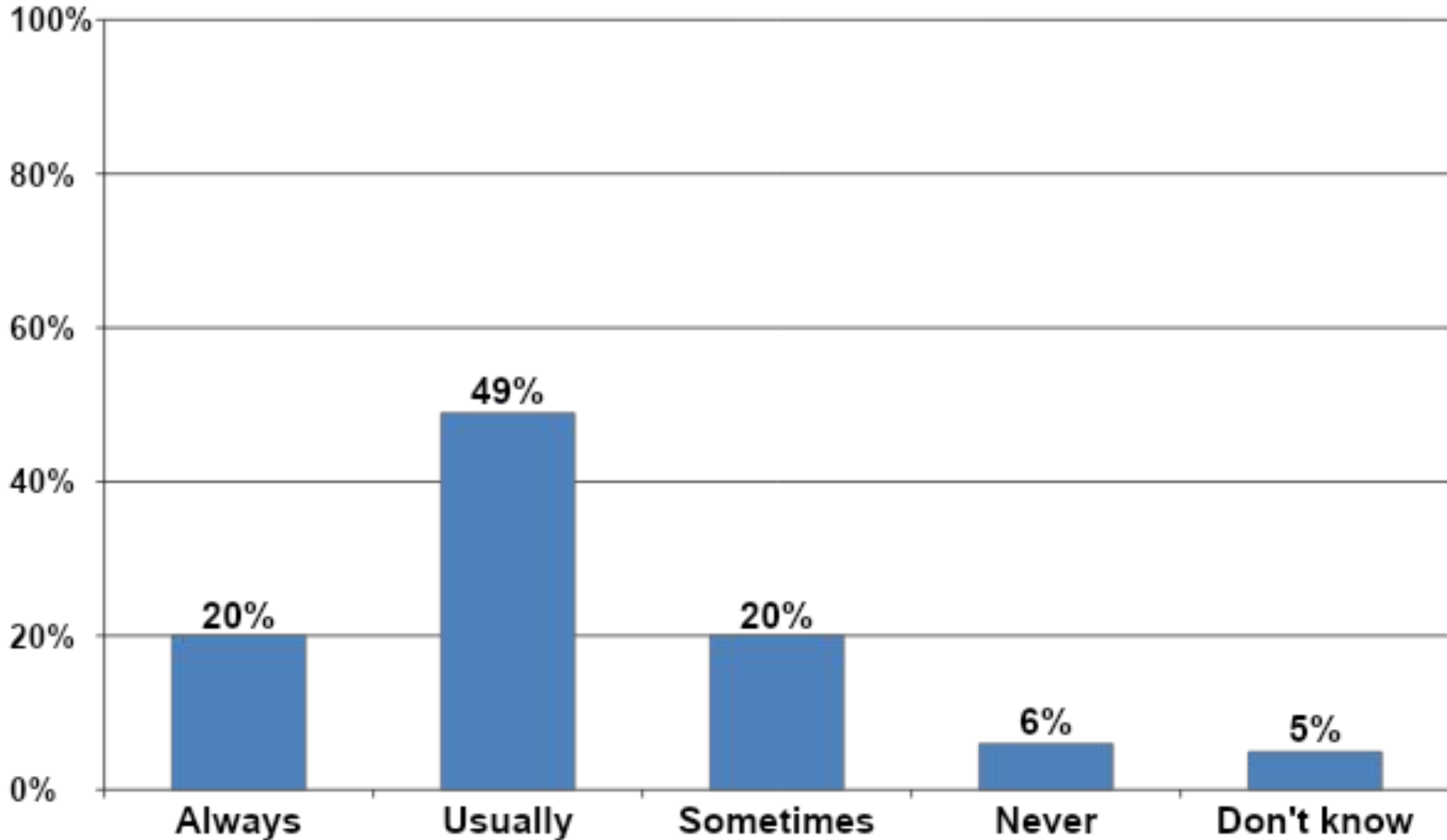


I have visited colleges that interest me.

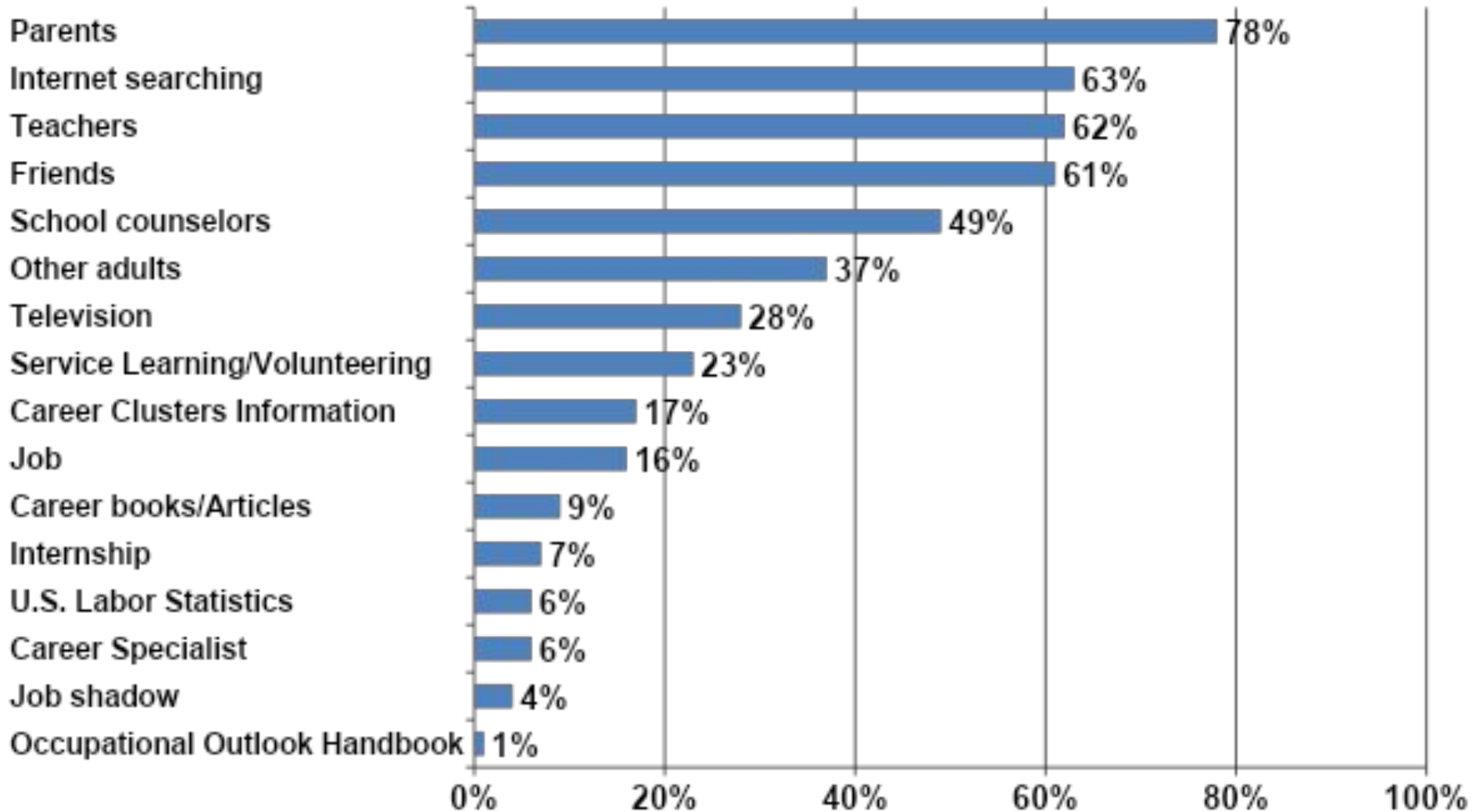
(Only those who plan to attend a 2-year, 4-year or voc/tech college)



I feel well prepared for college and/or life after high school.



Which, if any, of the following resources has helped you decide on what you want to do as a career?



School Perceptions Index Analysis

The Student Engagement Survey uses key questions nested in the survey to quantify student engagement through index scores in eight critical areas:

- **Connectedness**
- **Drive**
- **Citizenship**
- **Preparation**
- **Social and Emotional Aptitude**
- **Wellness**
- **Academic and Career Planning (Grades 6-12)**
- **Equity**

Research has shown a strong correlation between student engagement and success in college, career and life after high school.



Connectedness

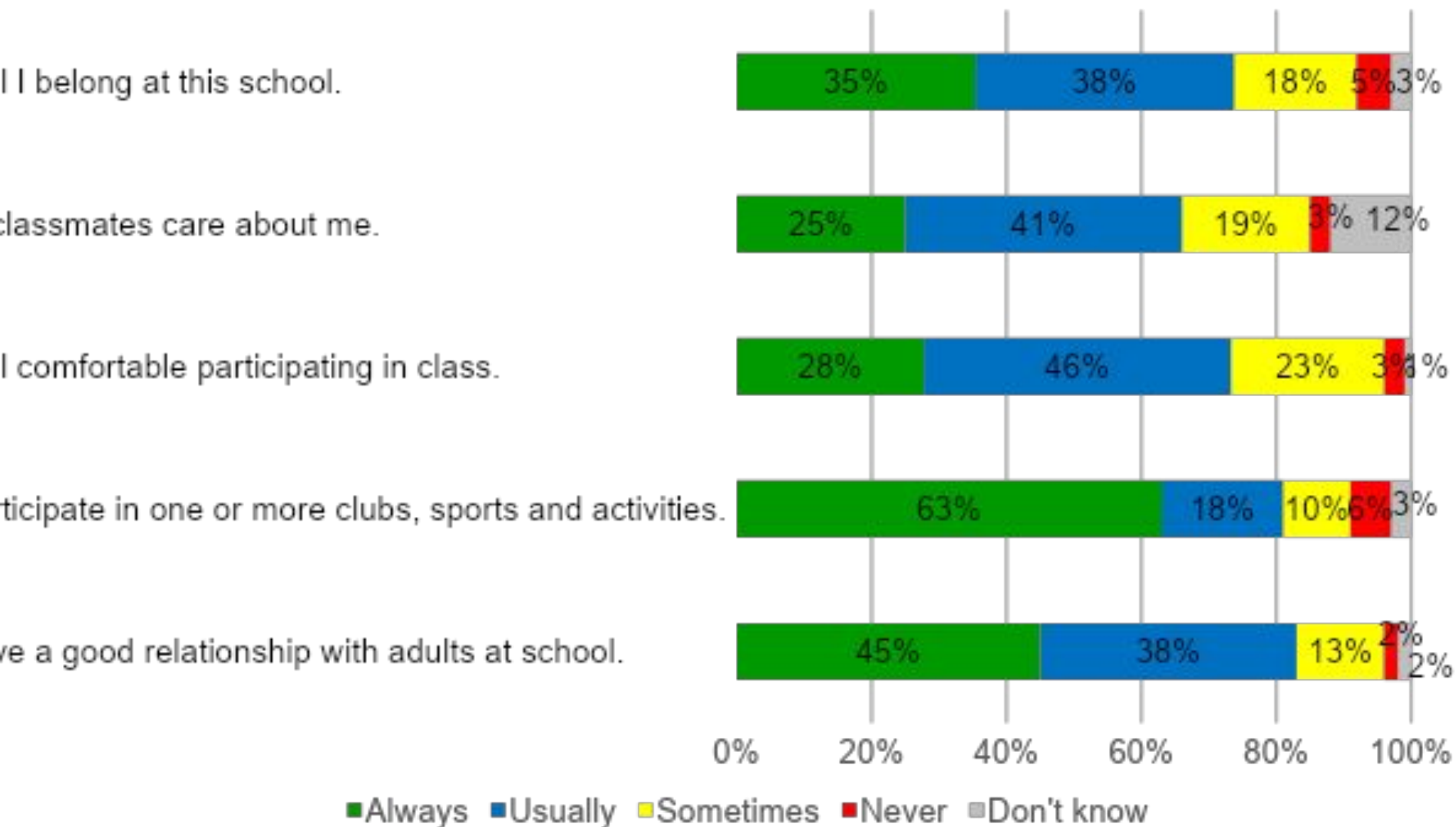
The student has positive relationships with peers and adults, is actively involved in school-related activities and feels a sense of belonging.

District Average: 3.15

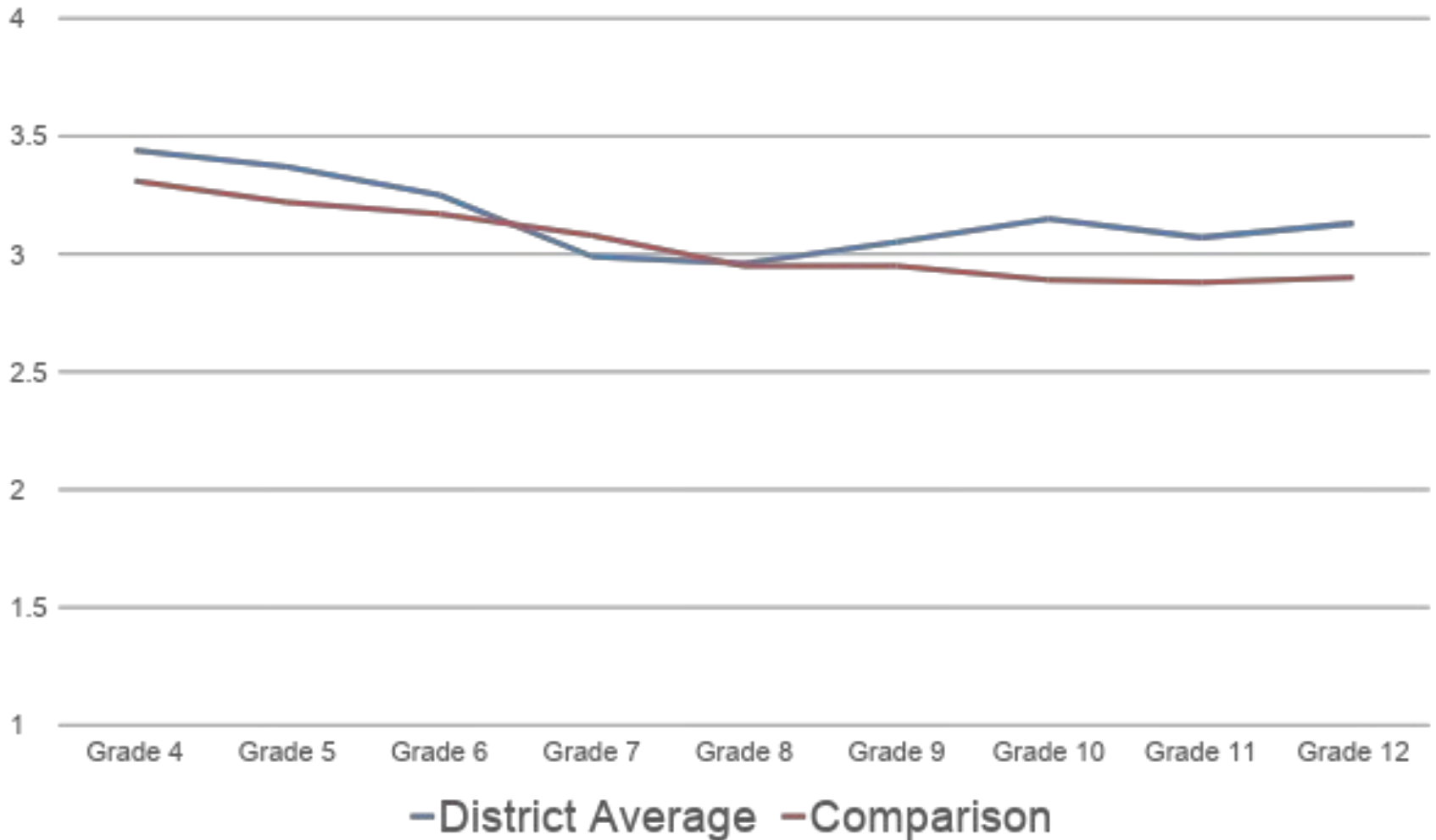
Comparison: 3.05

Connectedness Index Response Items

Always (4), Usually (3), Sometimes (2), Never (1)



Connectedness Index By Grade Level



Connectedness Index Response Items

Always (4), Usually (3), Sometimes (2), Never (1)

Connectedness items	District Average (n)	Comparison	Percentile
I have a good relationship with adults at school.	3.29 (709)	3.15	86
I participate in one or more clubs, sports and activities.	3.42 (670)	3.27	85
My classmates care about me.	2.99 (620)	2.88	81
I feel I belong at this school.	3.07 (679)	2.99	73
I feel comfortable participating in class.	2.98 (687)	2.96	57



Drive

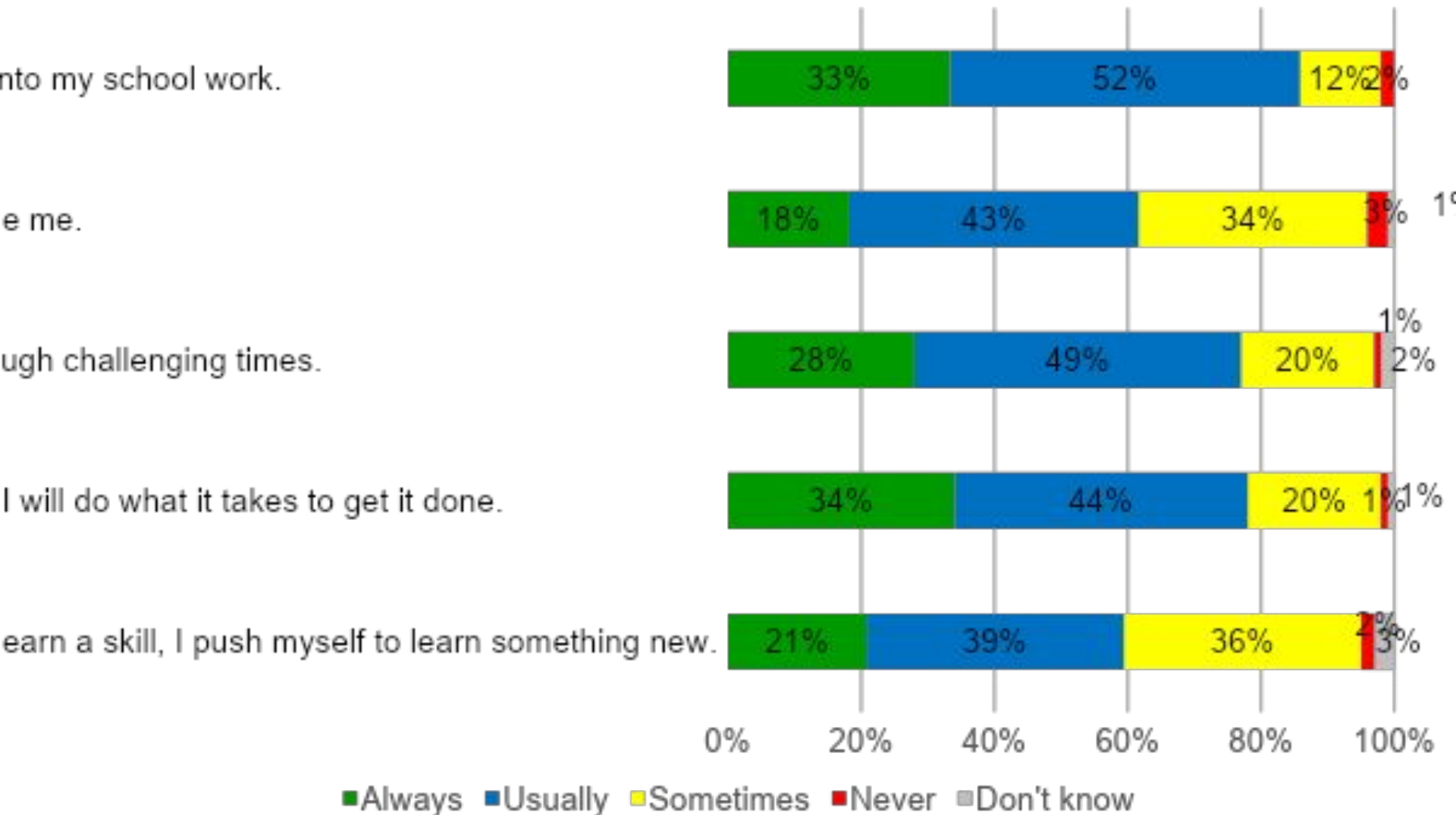
The student has the courage and resolve (grit) to see tasks through to completion despite setbacks and obstacles. They challenge themselves to higher level thinking by taking more challenging courses and having exposure to a higher level of rigor.

District Average: 2.99

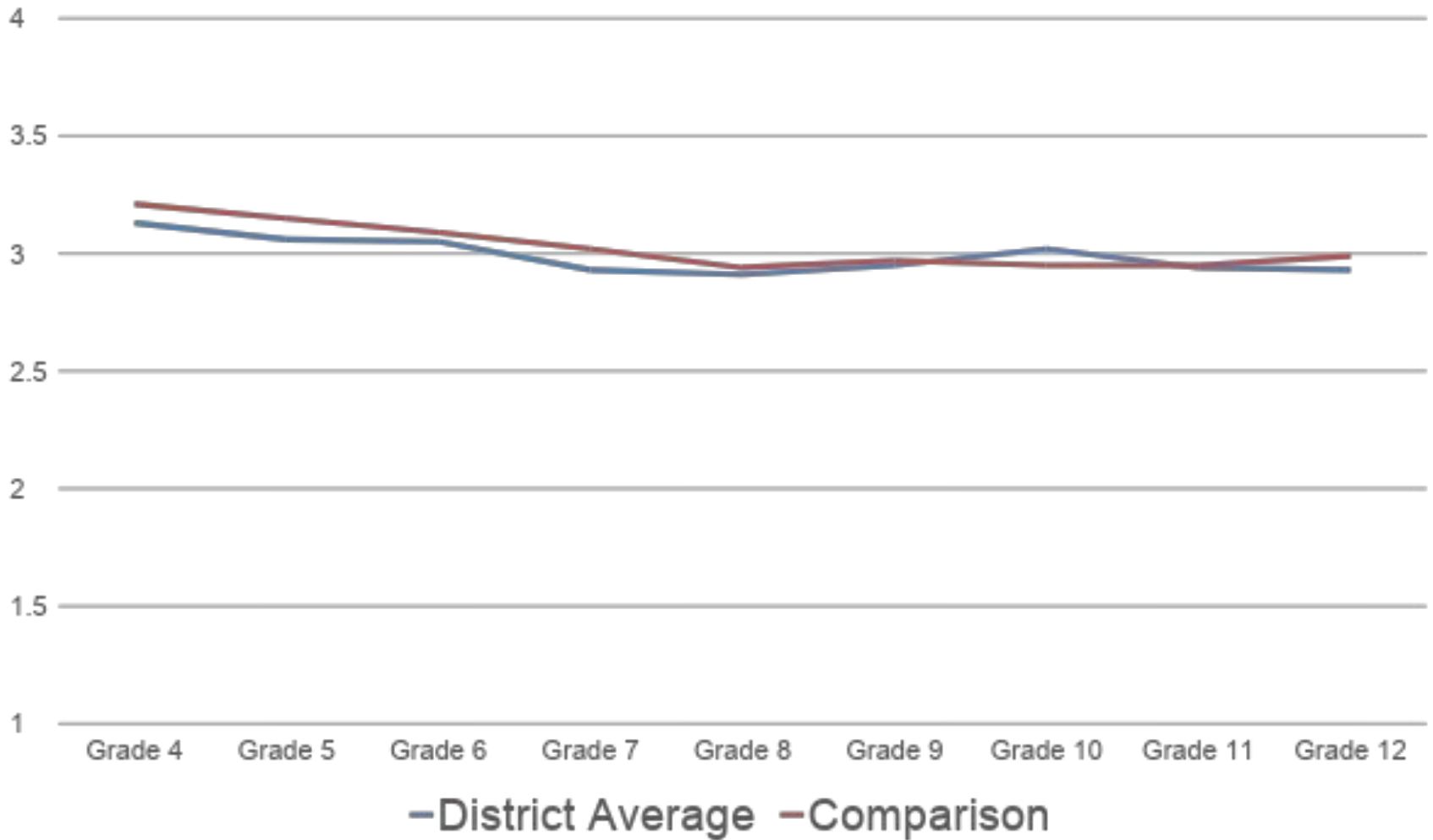
Comparison: 3.02

Drive Index Response Items

Always (4), Usually (3), Sometimes (2), Never (1)



Drive Index By Grade Level



Drive Index Response Items

Always (4), Usually (3), Sometimes (2), Never (1)

Drive items	District Average (n)	Comparison	Percentile
I am able to get through challenging times.	3.07 (708)	2.99	67
I put my best effort into my school work.	3.18 (690)	3.22	38
If I commit to a task I will do what it takes to get it done.	3.12 (714)	3.17	28
My classes challenge me.	2.77 (684)	2.81	23
When I accomplish/learn a skill, I push myself to learn something new.	2.81 (702)	2.90	18



Citizenship

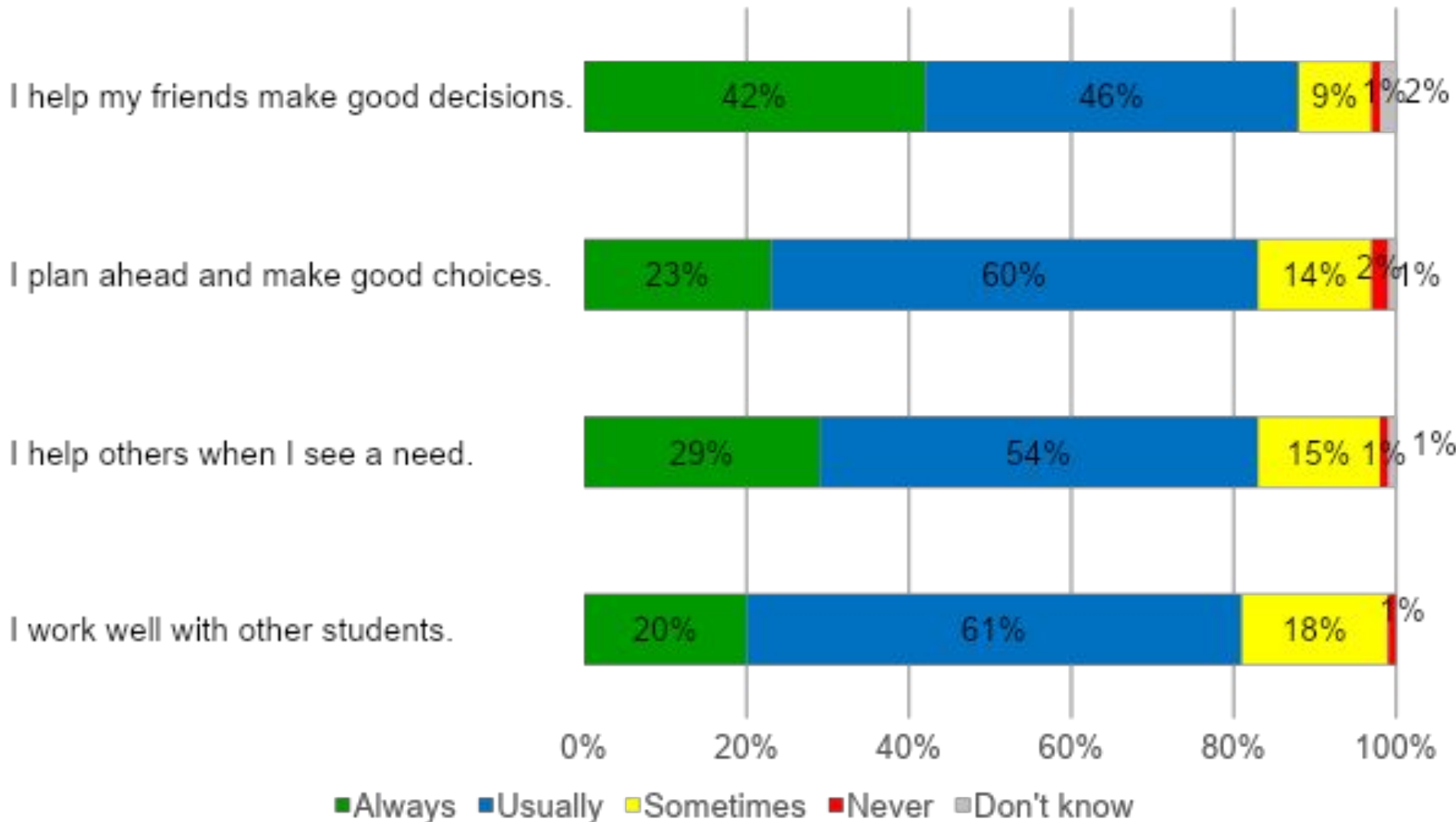
The student motivates and inspires individuals or groups to achieve their goals. They understand the importance of following the rules and are seen as a role model among their peer group for making responsible decisions.

District Average: 3.12

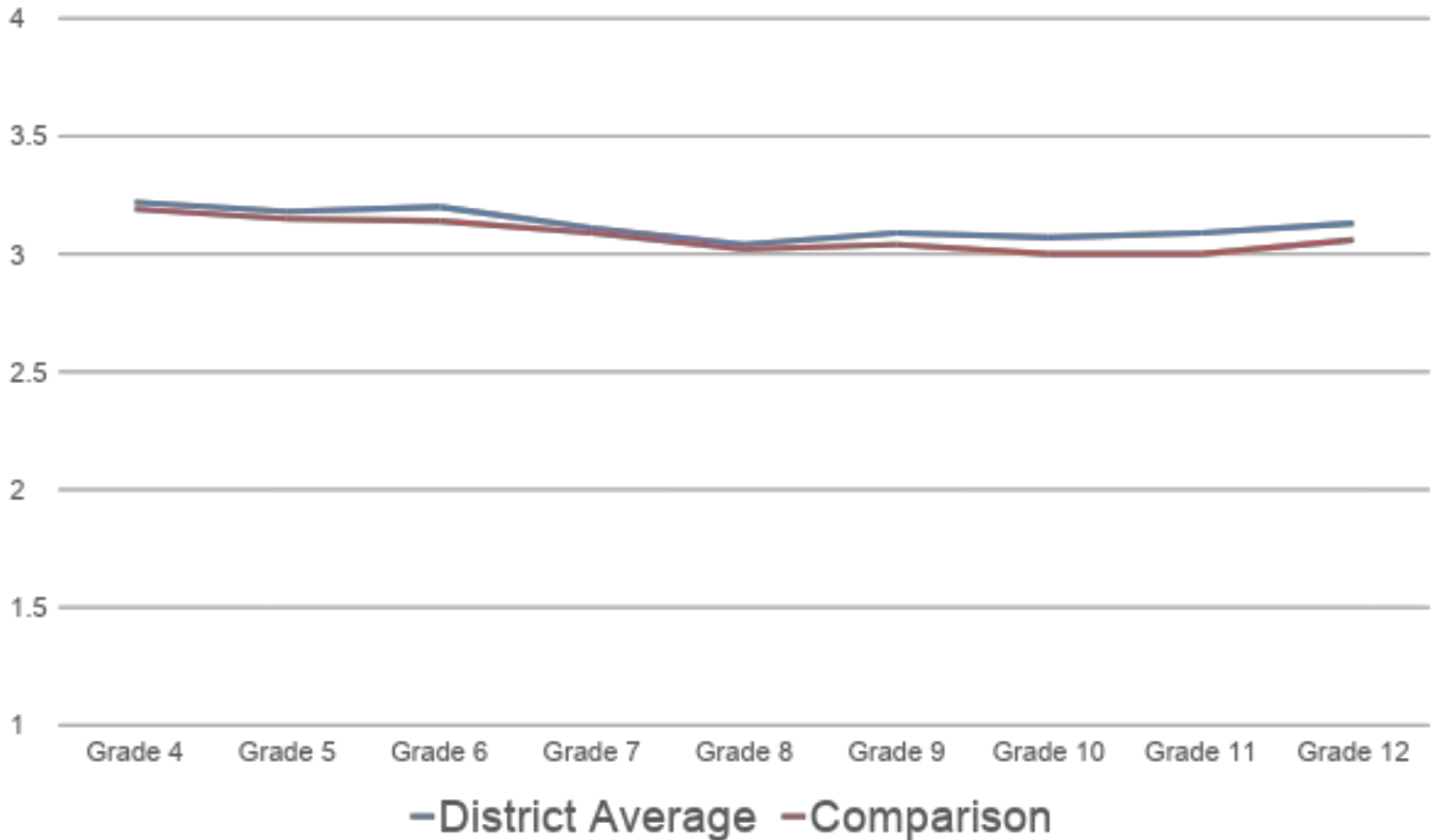
Comparison: 3.06

Citizenship Index Response Items

Always (4), Usually (3), Sometimes (2), Never (1)



Citizenship Index By Grade Level



Citizenship Index Response Items

Always (4), Usually (3), Sometimes (2), Never (1)

Citizenship items	District Average (n)	Comparison	Percentile
I help my friends make good decisions.	3.32 (689)	3.22	83
I help others when I see a need.	3.12 (714)	2.97	80
I work well with other students.	3.01 (718)	2.93	75
I plan ahead and make good choices.	3.05 (683)	3.13	20



Preparation

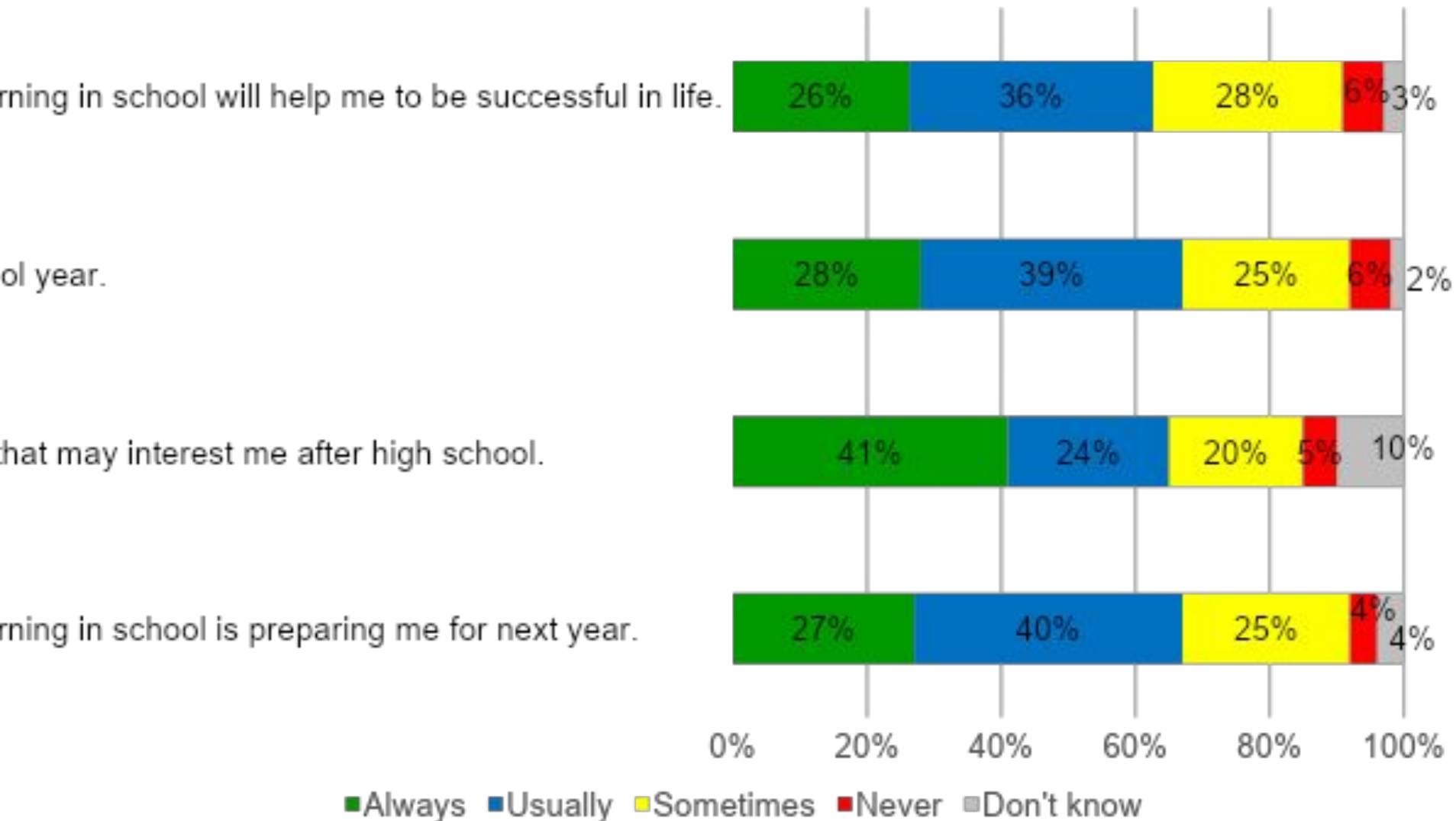
The student has clear goals for their future, has identified the steps to reach their goals as well as sees a connection between their current learning and activities and their future.

District Average: 2.95

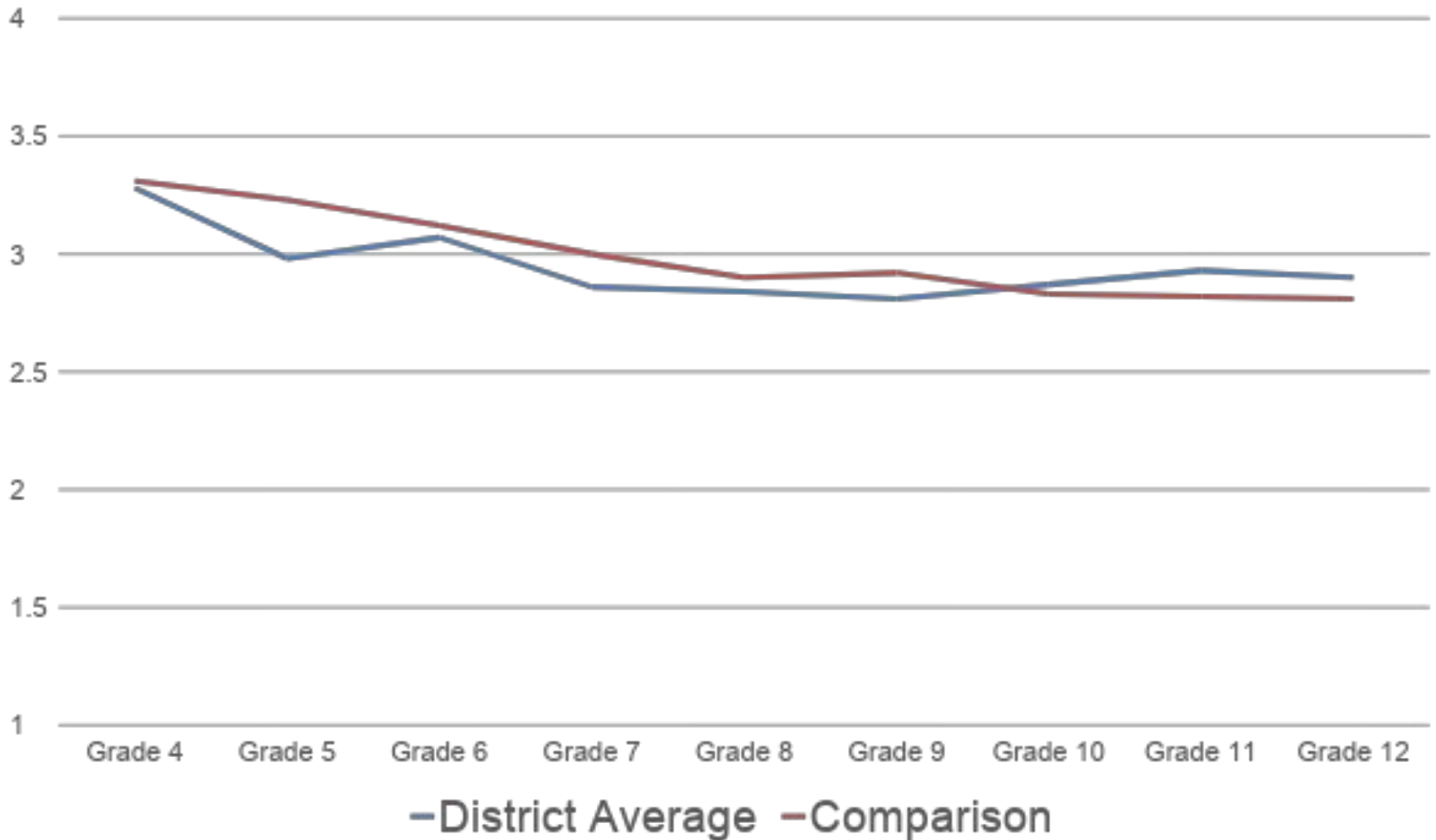
Comparison: 3.02

Preparation Index Response Items

Always (4), Usually (3), Sometimes (2), Never (1)



Preparation Index By Grade Level



Preparation Index Response Items

Always (4), Usually (3), Sometimes (2), Never (1)

Preparation items	District Average (n)	Comparison	Percentile
I set goals for the school year.	2.90 (680)	2.86	57
I explore careers/jobs that may interest me after high school.	3.11 (625)	3.07	56
I believe what I am learning in school will help me to be successful in life.	2.85 (673)	2.95	29
I believe what I am learning in school is preparing me for next year.	2.95 (663)	3.19	6



Social and Emotional Aptitude

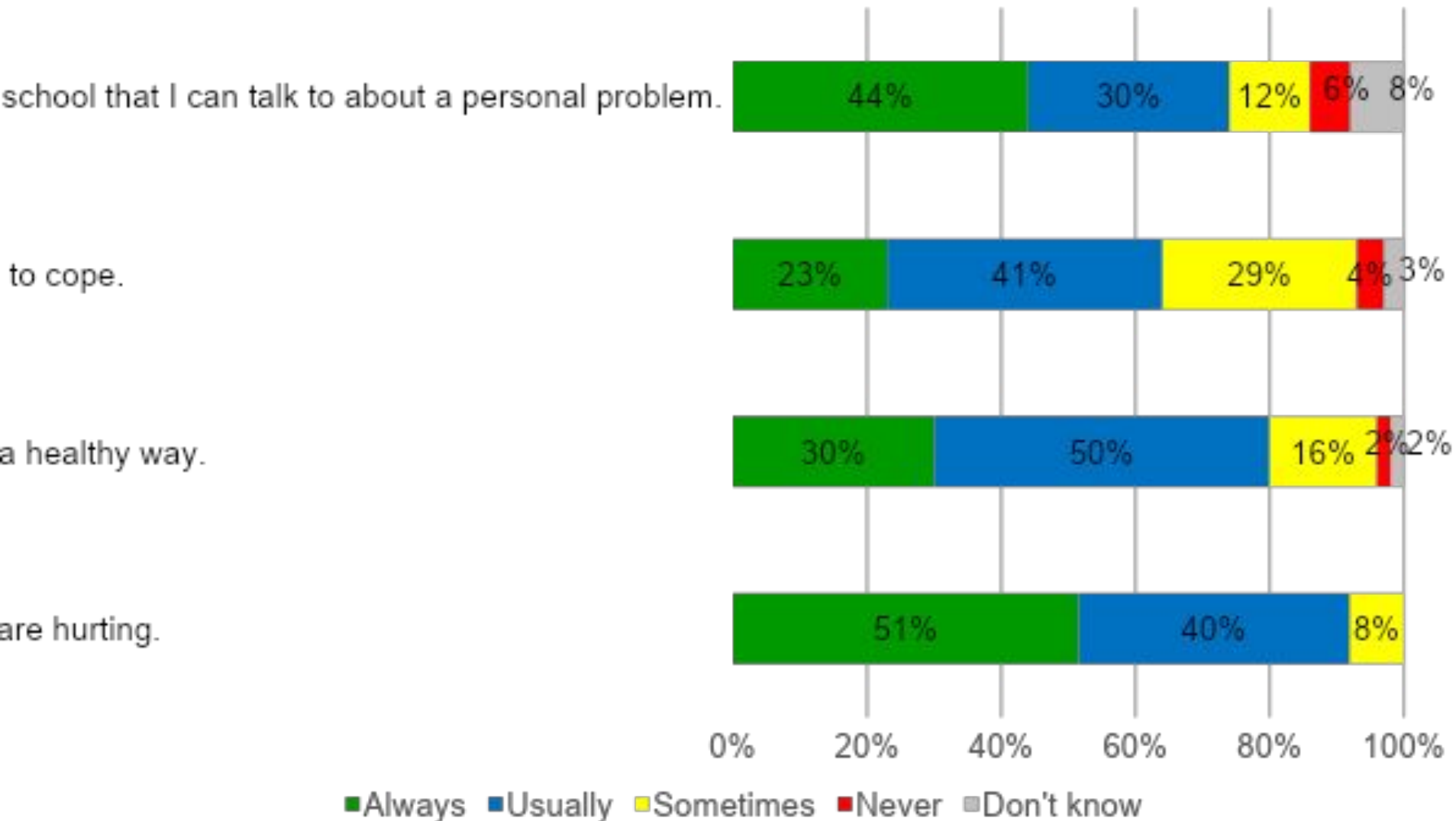
The student has the ability to understand and manage emotions, identify and utilize critical resources in times of need, feel and show empathy for others and demonstrates self-control.

District Average: 3.15

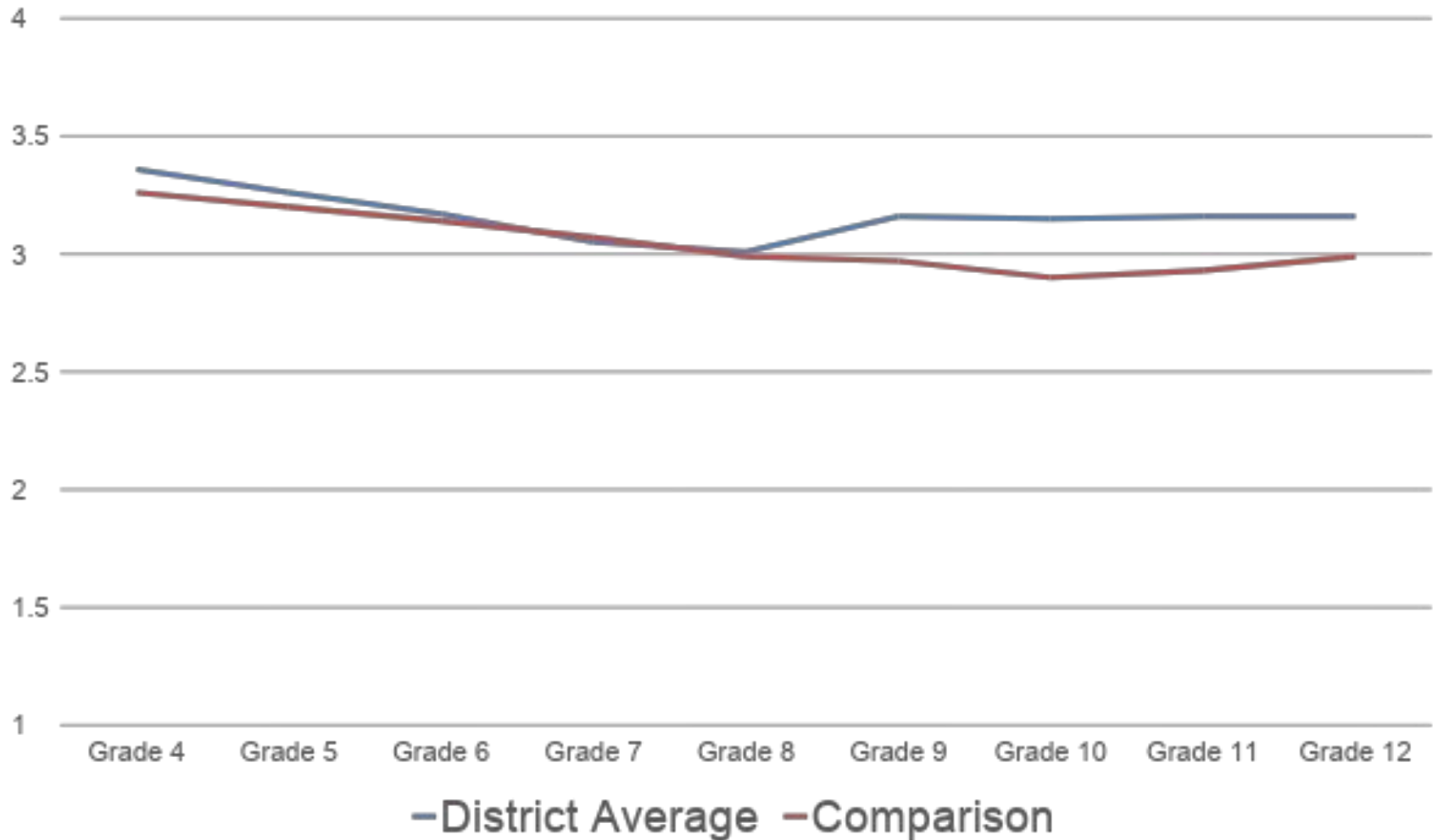
Comparison: 3.05

Social and Emotional Index Response Items

Always (4), Usually (3), Sometimes (2), Never (1)



Social and Emotional Index By Grade Level



Social and Emotional Index Response Items

Always (4), Usually (3), Sometimes (2), Never (1)

Social and Emotional items	District Average (n)	Comparison	Percentile
There is at least one adult in my school that I can talk to about a personal problem.	3.21 (646)	3.07	93
I feel sorry for others when they are hurting.	3.43 (718)	3.28	86
I know how to resolve conflict in a healthy way.	3.12 (700)	3.04	73
When I feel stressed I know how to cope.	2.86 (697)	2.82	52



Wellness

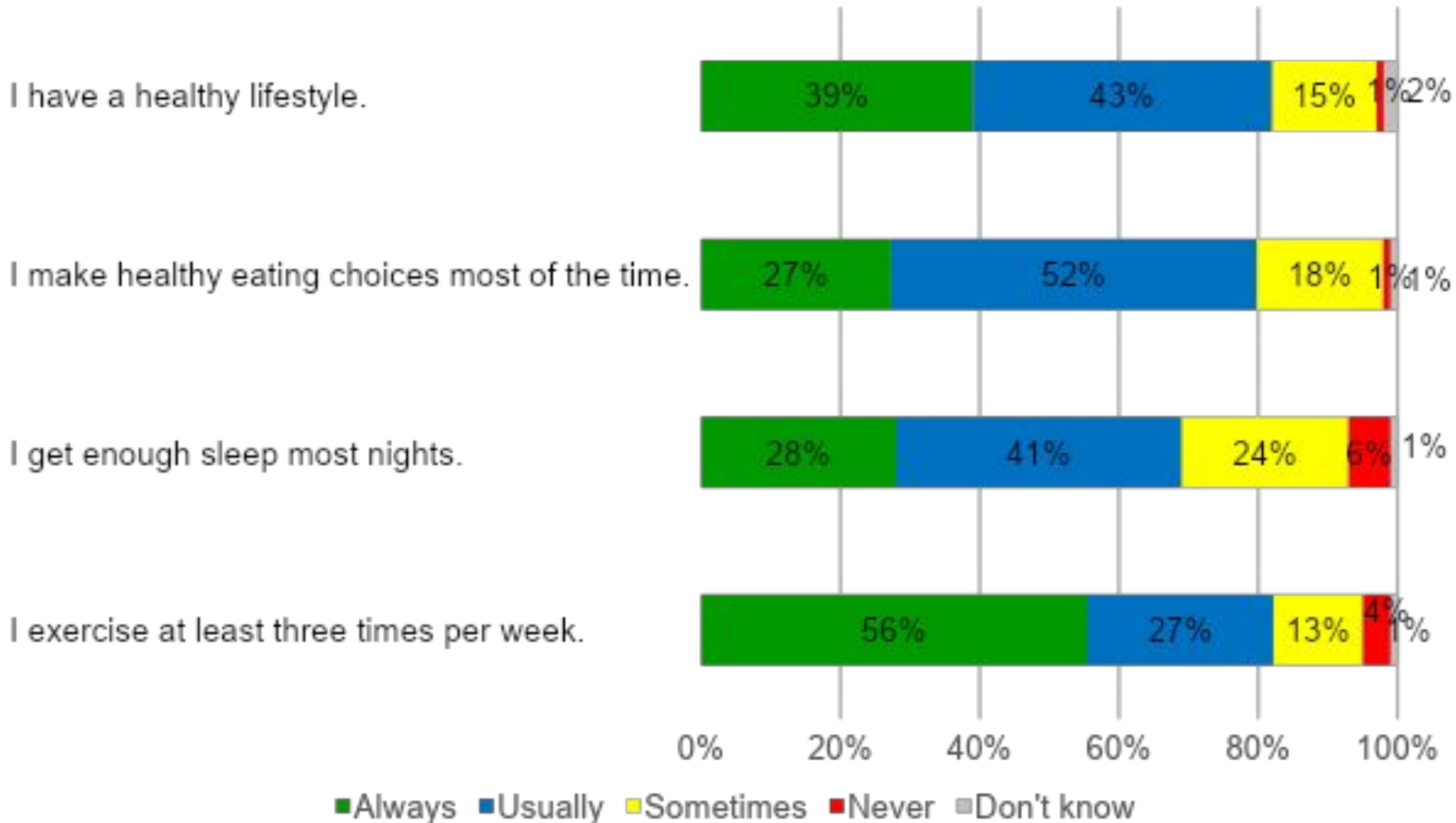
The student maintains a healthy lifestyle and makes decisions in the best interest of their overall health.

District Average: 3.14

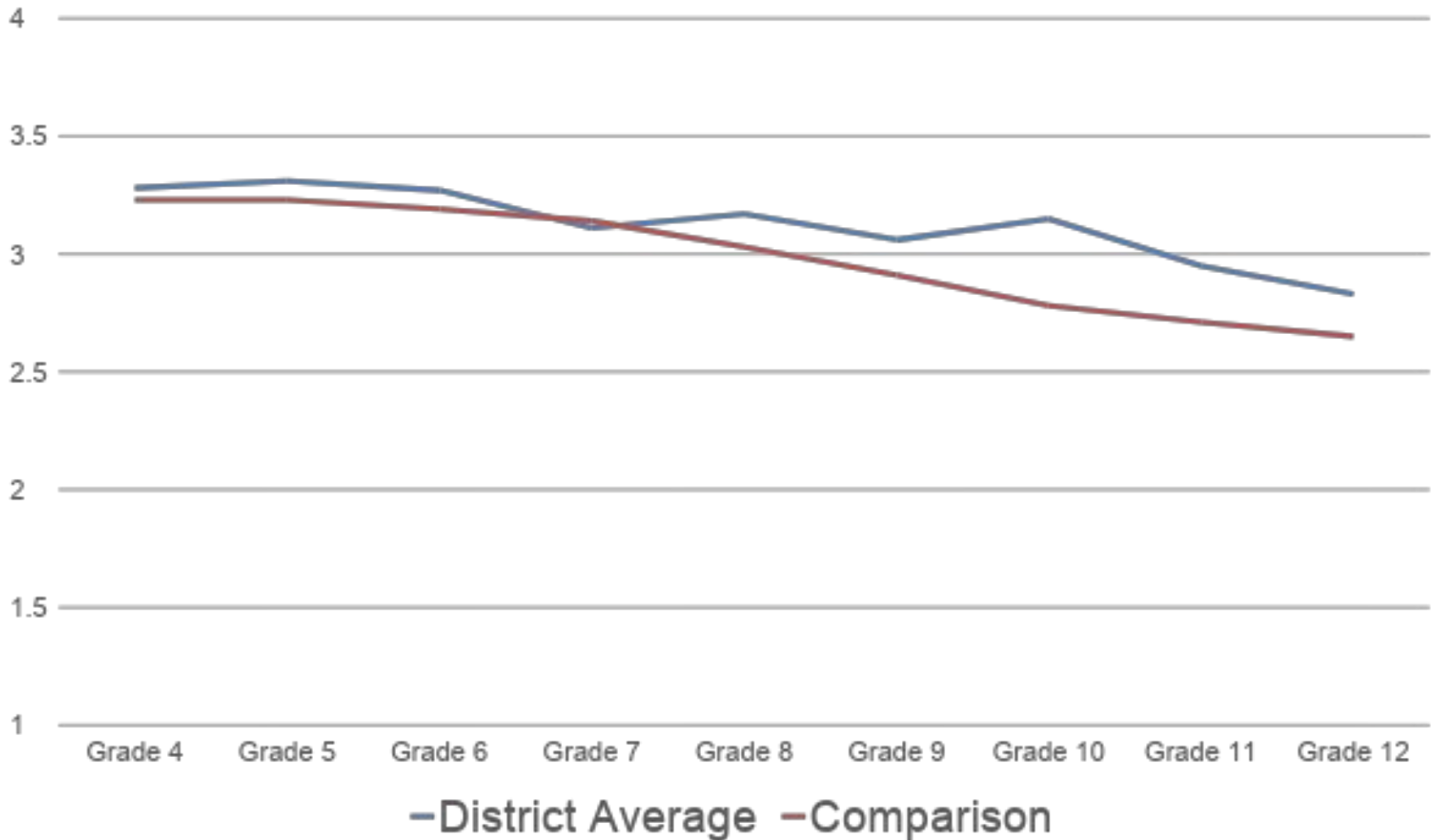
Comparison: 3.02

Wellness Index Response Items

Always (4), Usually (3), Sometimes (2), Never (1)



Wellness Index By Grade Level



Wellness Index Response Items

Always (4), Usually (3), Sometimes (2), Never (1)

Wellness items	District Average (n)	Comparison	Percentile
I make healthy eating choices most of the time.	3.07 (709)	2.91	89
I exercise at least three times per week.	3.36 (709)	3.27	82
I get enough sleep most nights.	2.92 (713)	2.77	80
I have a healthy lifestyle.	3.22 (703)	3.13	79



Academic and Career Planning

(Grades 6-12)

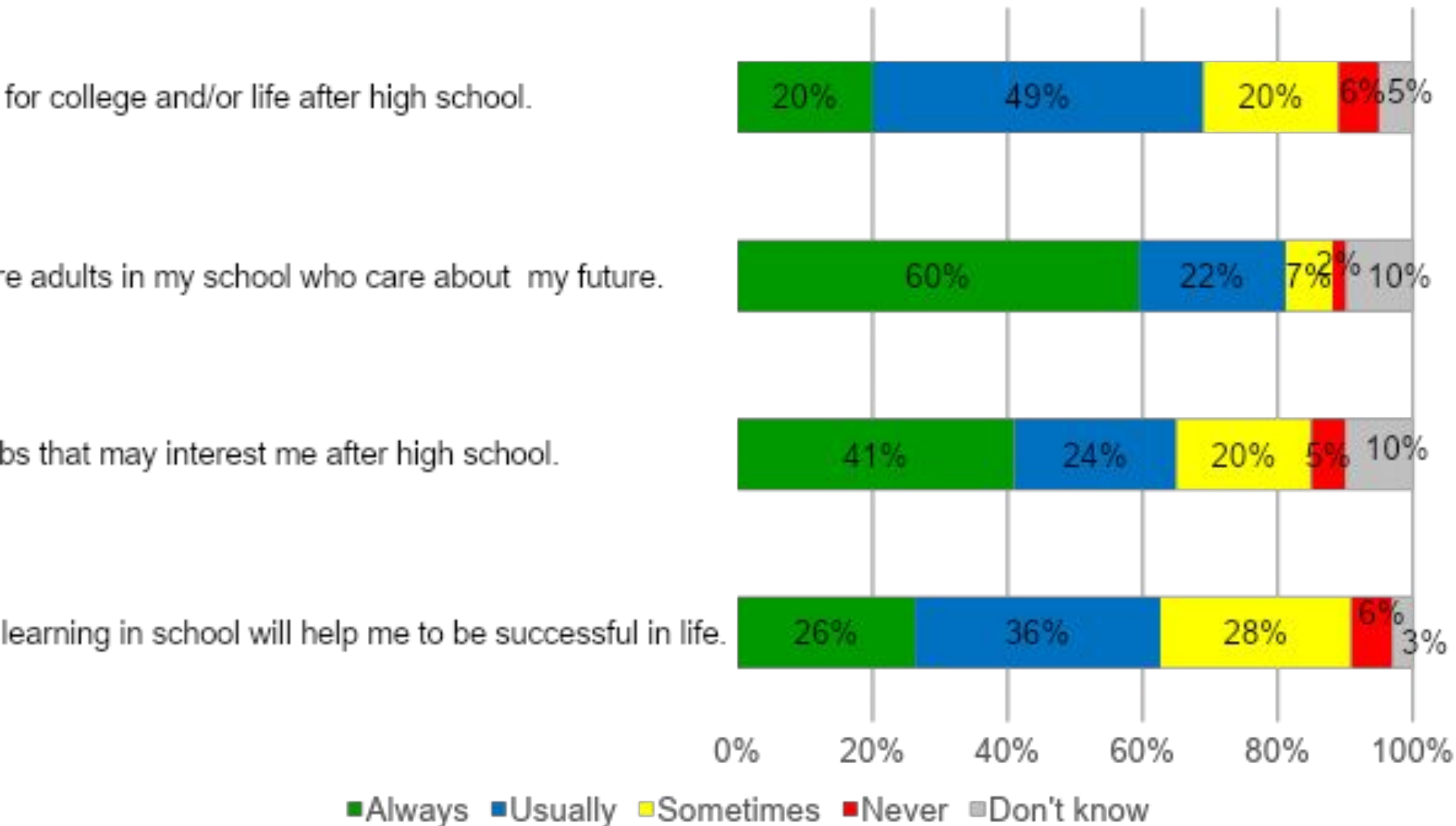
The student is thoughtfully preparing for their future career and/or education by utilizing a planning process, exploring careers/jobs of interest and connecting to support people and resources.

District Average: 3.10

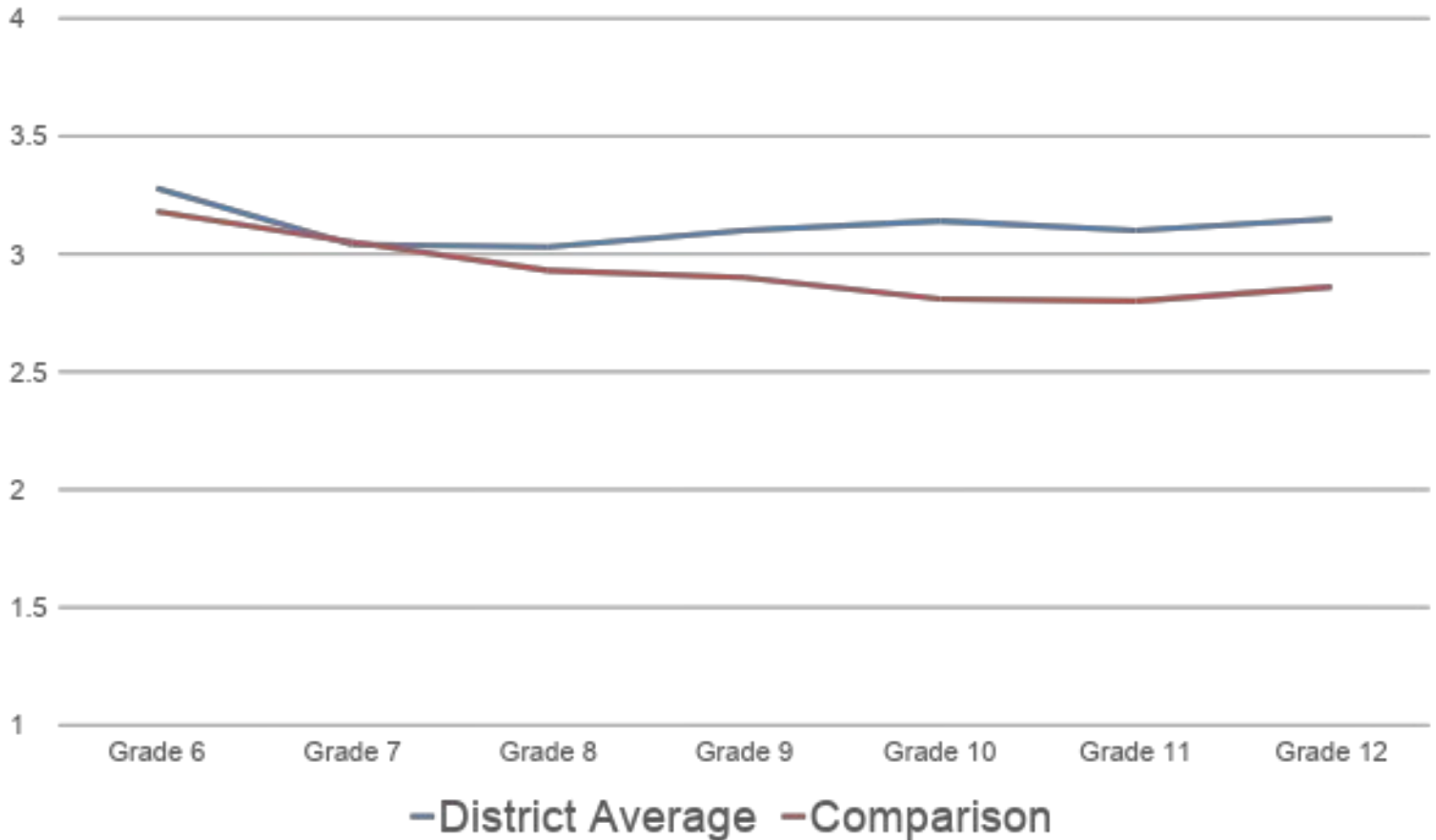
Comparison: 2.98

Academic and Career Planning Index Response Items

Always (4), Usually (3), Sometimes (2), Never (1)



Academic and Career Planning Index By Grade Level



Academic and Career Planning Index Response Items

Always (4), Usually (3), Sometimes (2), Never (1)

Academic and Career Planning items	District Average (n)	Comparison	Percentile
There is one or more adults in my school who care about my future.	3.56 (634)	3.37	93
I feel well prepared for college and/or life after high school.	2.87 (109)	2.81	69
I explore careers/jobs that may interest me after high school.	3.11 (625)	3.07	56
I believe what I am learning in school will help me to be successful in life.	2.85 (673)	2.95	29



Equity

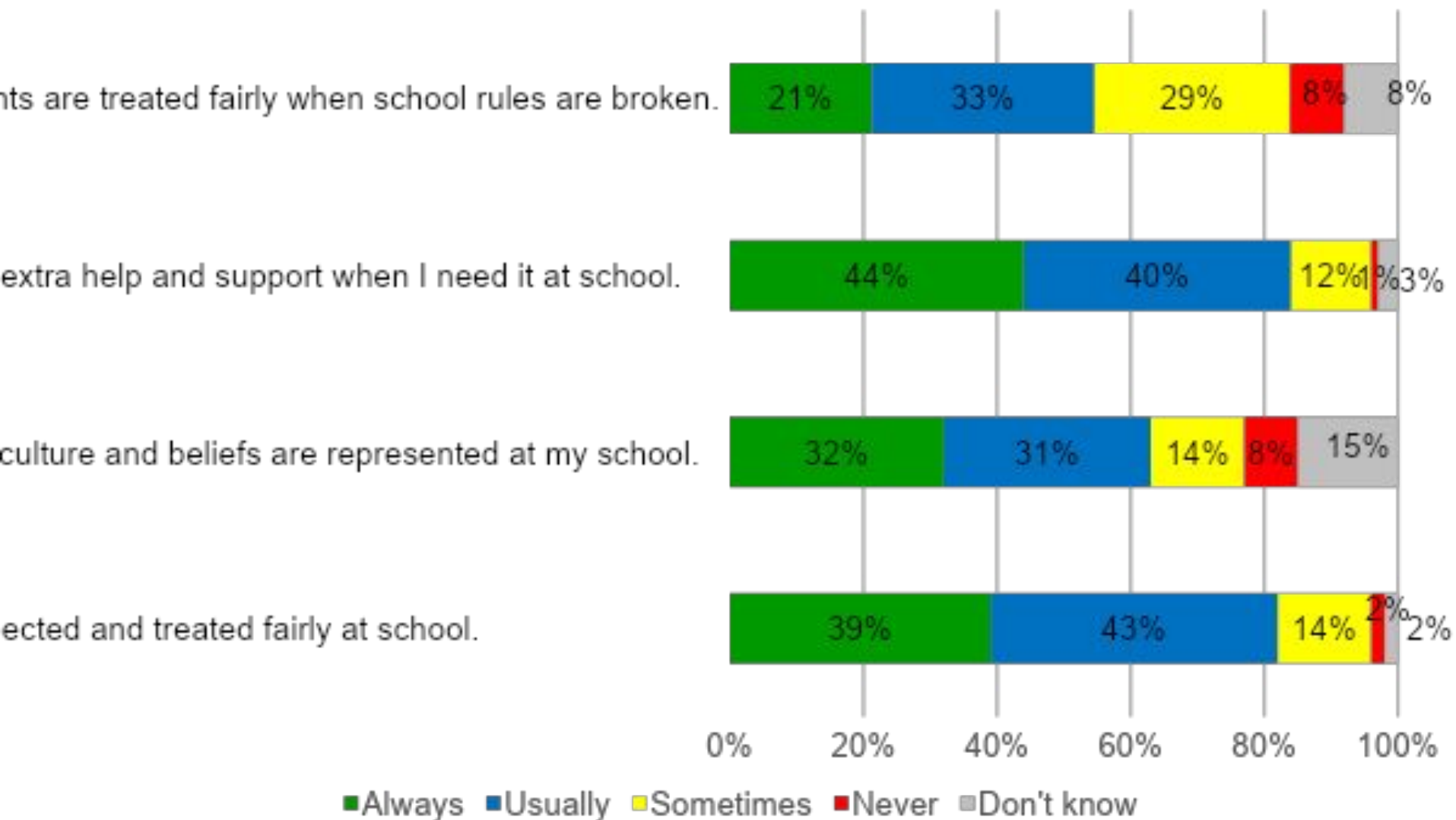
All students and families are treated with respect and accepted for their values and beliefs. The needed resources, experiences and opportunities to grow and learn are provided to all students.

District Average: 3.07

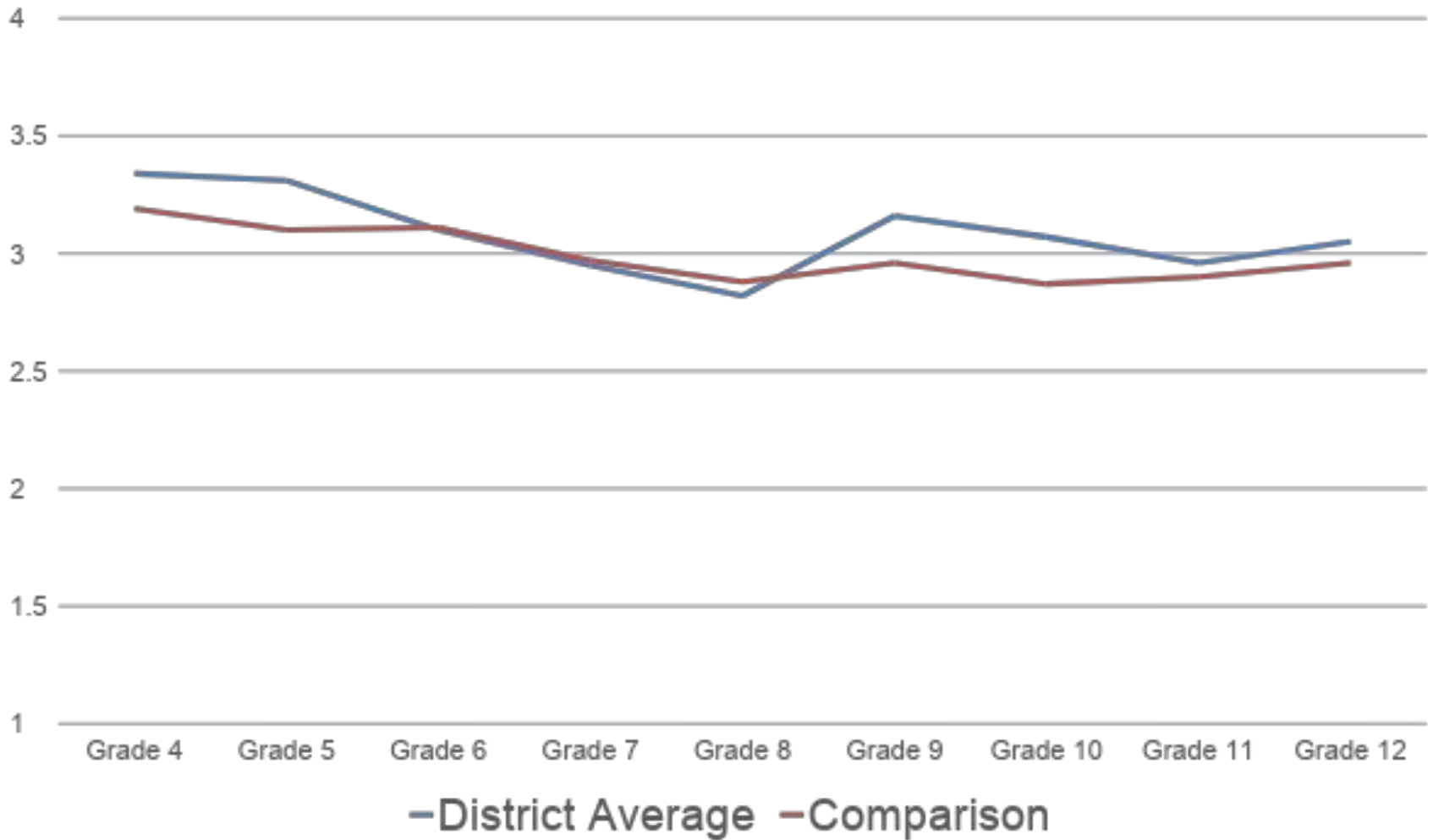
Comparison: 2.96

Equity Index Response Items

Always (4), Usually (3), Sometimes (2), Never (1)



Equity Index By Grade Level



Equity Index Response Items

Always (4), Usually (3), Sometimes (2), Never (1)

Equity items	District Average (n)	Comparison	Percentile
I am respected and treated fairly at school.	3.20 (690)	2.96	96
I can get extra help and support when I need it at school.	3.32 (669)	N/A	N/A
I feel my culture and beliefs are represented at my school.	3.02 (583)	N/A	N/A
All students are treated fairly when school rules are broken.	2.73 (632)	N/A	N/A

Thank you!



Parent Surveys - Staff Surveys - Student Surveys - Community Surveys
www.schoolperceptions.com
(262) 644-4300